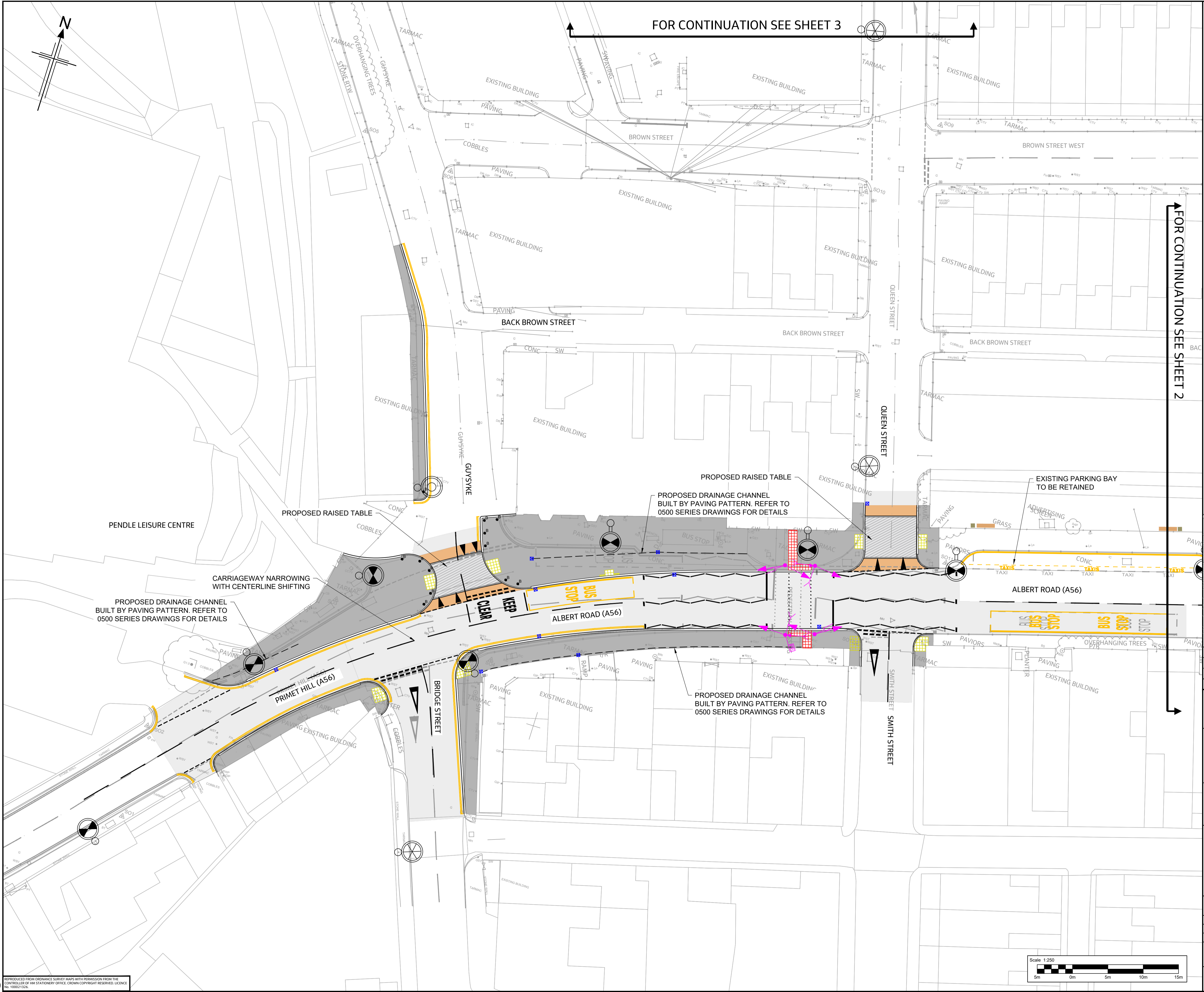


C:\pwworking\jacobs-emea-01\0410587\B2427722-JAC-HGN-PE\_01-DR-CH-0001.dwg - 18/12/2024 10:00:45 - SHEET 01 - Gandhik



FOR CONTINUATION SEE SHEET 3

FOR CONTINUATION SEE SHEET 2

1. All dimensions in metres unless stated otherwise.
2. Drawings to be printed in colour to enable correct viewing of symbols.
3. Do not scale from this drawing.
4. This drawing is to be read in conjunction with the associated contract series drawings, documents, and appendices.
5. The Contractor shall verify the presence and location of all services before undertaking any work in any area of the site before commencing the works.

**KEY:**

- Scheme boundary
- Proposed kerb
- Proposed drainage channel
- Proposed tactile paving in buff colour (blister)
- Proposed tactile paving in red colour (blister)
- Proposed tactile paving at bus boarding area in buff colour (blister)
- Proposed footway
- Proposed raised table ramp
- Proposed raised table
- Proposed carriageway resurfacing
- Existing cobbles refurbishment
- Proposed road markings
- Proposed sign and post / proposed sign face
- Proposed traffic sign to be mounted on lighting column
- Proposed asphalt concrete speed cushions
- Proposed landscape arrangement. Refer to 3000 series drawings for details
- Proposed bollards in Marshalls RB109, colour in black, or similar approved
- Proposed pedestrian guardrails in Optitrail type V4, colour in blue, or similar approved
- Proposed street lighting. Refer to 1300 series drawings for details
- Proposed gully. Refer to 500 series drawings for details
- Proposed traffic signals equipment. Refer to 1200 series drawings for details
- Existing relocated traffic signals equipment. Refer to 1200 series drawings for details

**LOCATION PLAN**

P01	02/09/24	SUITABLE FOR RSA 2 AUDIT	PP	GB	ML	AP
P02	04/10/24	SUITABLE FOR REVIEW & COMMENT	PP	GS	G5	PB
P03	17/12/24	SUITABLE FOR TENDER	PP	MG	ML	ML
Rev	Rev. Date	Purpose of revision	Drawn	Checked	Rev'd	Appr'd

**Jacobs**  
7th Floor, 2 Colmore Square, 38 Colmore Circus  
Queensway, Birmingham, B4 6BN  
Tel: +44(0)121 237 4000 www.jacobs.com

**Lancashire County Council**

Client

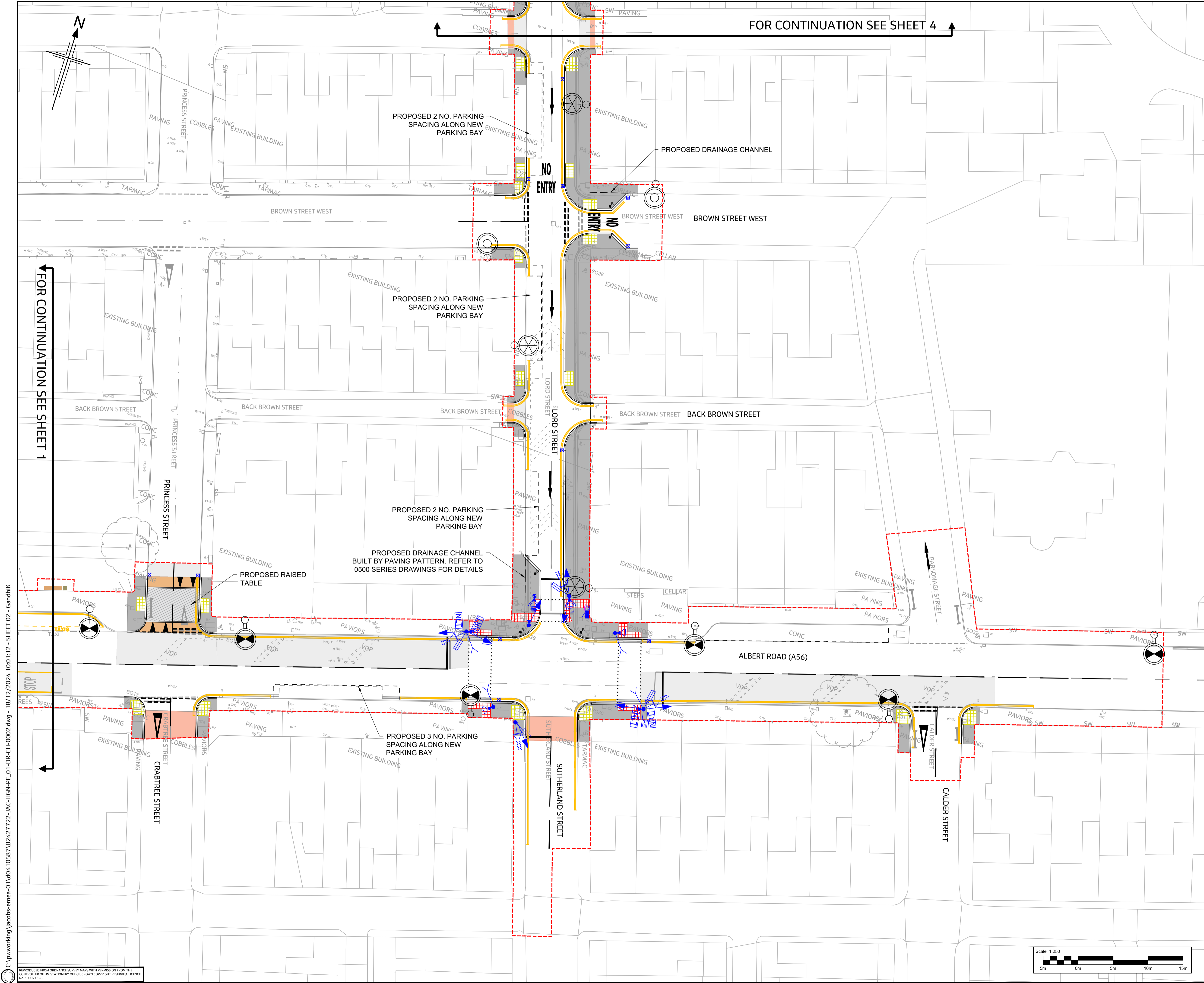
Project: LUF Detailed Design

Drawing title: COLNE AREA GENERAL ARRANGEMENT SHEET 1 OF 4

Drawing status: D2 - SUITABLE FOR TENDER

Scale	1:250	DO NOT SCALE
Jacobs No.	B2427722	
Client no.	B2427722	
Drawing number	B2427722-JAC-HGN-PE_01-DR-CH-0001	Rev P03

© Copyright 2024 Jacobs U.K. Limited. The concepts and information contained in this document are the property of Jacobs. Use or copying of this document in whole or in part without the written permission of Jacobs constitutes an infringement of copyright. Limitation: This drawing has been prepared on behalf of, and for the exclusive use of Jacobs Client, and is subject to, and issued in accordance with, the provisions of the contract between Jacobs and the Client. Jacobs accepts no liability or responsibility whatsoever for or in respect of, any use of, or reliance upon, this drawing by any third party.



FOR CONTINUATION SEE SHEET 4

FOR CONTINUATION SEE SHEET 1

1. All dimensions in metres unless stated otherwise.
2. Drawings to be printed in colour to enable correct viewing of symbols.
3. Do not scale from this drawing.
4. This drawing is to be read in conjunction with the associated contract series drawings, documents, and appendices.
5. The Contractor shall verify the presence and location of all services before undertaking any work in any area of the site by carrying out a full non-intrusive survey of the entire site before commencing the works.

- KEY:**
- Scheme boundary
  - - - Proposed kerb
  - - - Proposed drainage channel
  - [Grid] Proposed tactile paving in buff colour (blister)
  - [Grid] Proposed tactile paving in red colour (blister)
  - [Grid] Proposed tactile paving at bus boarding area in buff colour (blister)
  - [Grey] Proposed footway
  - [Orange] Proposed raised table ramp
  - [Hatched] Proposed raised table
  - [Light Grey] Proposed carriageway resurfacing
  - [Orange] Existing cobbles refurbishment
  - [Yellow] Proposed road markings
  - [Sign] Proposed sign and post / proposed sign face
  - [Sign] Proposed traffic sign to be mounted on lighting column
  - [Box] Proposed asphalt concrete speed cushions
  - [Landscape] Proposed landscape arrangement. Refer to 3000 series drawings for details
  - [Bollard] Proposed bollards in Marshalls RB109, colour in black, or similar approved
  - [Guardrail] Proposed pedestrian guardrails in Optitral type V4, colour in blue, or similar approved
  - [Lighting] Proposed street lighting. Refer to 1300 series drawings for details
  - [Gully] Proposed gully. Refer to 500 series drawings for details
  - [Traffic Signal] Proposed traffic signals equipment. Refer to 1200 series drawings for details
  - [Relocated Signal] Existing relocated traffic signals equipment. Refer to 1200 series drawings for details



Rev	Rev. Date	Purpose of revision	Drawn	Checked	Rev'd	Appr'd
P01	02/09/24	SUITABLE FOR RSA 2 AUDIT	PP	GB	ML	AP
P02	04/10/24	SUITABLE FOR REVIEW & COMMENT	PP	GS	GS	PB
P03	17/12/24	SUITABLE FOR TENDER	PP	MG	ML	ML

**Jacobs**  
7th Floor, 2 Colmore Square, 38 Colmore Circus  
Queensway, Birmingham, B4 6BN  
Tel: +44(0)121 237 4000 www.jacobs.com

**Lancashire County Council**

Client

Project

LUF Detailed Design

Drawing title

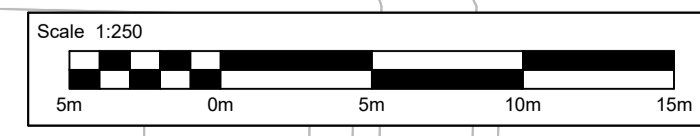
COLNE AREA  
GENERAL ARRANGEMENT  
SHEET 2 OF 4

Drawing status

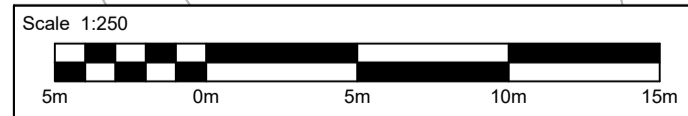
D2 - SUITABLE FOR TENDER

Scale	1:250	DO NOT SCALE
Jacobs No.	B2427722	
Client no.	B2427722	
Drawing number	B2427722-JAC-HGN-PE_01-DR-CH-0002	Rev
		P03

© Copyright 2024 Jacobs U.K. Limited. The concepts and information contained in this document are the property of Jacobs. Use or copying of this document in whole or in part without the written permission of Jacobs constitutes an infringement of copyright. Limitation: This drawing has been prepared on behalf of, and for the exclusive use of Jacobs Client, and is subject to, and issued in accordance with, the provisions of the contract between Jacobs and the Client. Jacobs accepts no liability or responsibility whatsoever for or in respect of, any use of, or reliance upon, this drawing by any third party.



C:\pwworking\jacobs-emea-01\0410587\B2427722-JAC-HGN-PE\_01-DR-CH-0003.dwg - 18/12/2024 10:01:38 - SHEET 03 - Gandhik

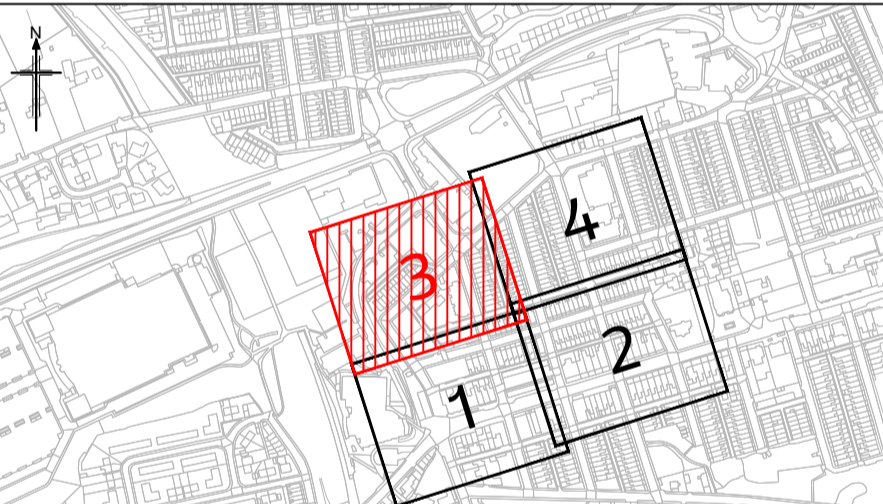


REPRODUCED FROM ORDNANCE SURVEY MAPS WITH PERMISSION FROM THE  
CONTROLLER OF HM STATIONERY OFFICE. CROWN COPYRIGHT RESERVED. LICENCE  
No. 100021124.

1. All dimensions in metres unless stated otherwise.
2. Drawings to be printed in colour to enable correct viewing of symbols.
3. Do not scale from this drawing.
4. This drawing is to be read in conjunction with the associated contract series drawings, documents, and appendices.
5. The Contractor shall verify the presence and location of all services before undertaking any work in any area of the site by carrying out a full non-intrusive survey of the entire site before commencing the works.

KEY:

- Scheme boundary
- Proposed kerb
- - - Proposed drainage channel
- Proposed tactile paving in buff colour (blister)
- Proposed tactile paving in red colour (blister)
- Proposed tactile paving at bus boarding area in buff colour (blister)
- Proposed footway
- Proposed raised table ramp
- Proposed raised table
- Proposed carriageway resurfacing
- Existing cobbles refurbishment
- Proposed road markings
- Proposed sign and post / proposed sign face
- Proposed traffic sign to be mounted on lighting column
- Proposed asphalt concrete speed cushions
- Proposed landscape arrangement. Refer to 3000 series drawings for details
- Proposed bollards in Marshalls RB109, colour in black, or similar approved
- Proposed pedestrian guardrails in Optitrail type V4, colour in blue, or similar approved
- Proposed street lighting. Refer to 1300 series drawings for details
- Proposed gully. Refer to 500 series drawings for details
- Proposed traffic signals equipment. Refer to 1200 series drawings for details
- Existing relocated traffic signals equipment. Refer to 1200 series drawings for details



LOCATION PLAN							
P01	02/09/24	SUITABLE FOR RSA 2 AUDIT	PP	GB	ML	AP	
P02	04/10/24	SUITABLE FOR REVIEW & COMMENT	PP	GS	GS	PB	
P03	17/12/24	SUITABLE FOR TENDER	PP	MG	ML	ML	
Rev	Rev. Date	Purpose of revision	Drawn	Checked	Rev'd	Apprv'd	

**Jacobs**  
7th Floor, 2 Colmore Square, 38 Colmore Circus  
Queensway, Birmingham, B4 6BN  
Tel: +44(0)121 237 4000 www.jacobs.com

**Lancashire**  
County Council

Project: LUF Detailed Design

Drawing title:  
**COLNE AREA  
GENERAL ARRANGEMENT  
SHEET 3 OF 4**

Drawing status: **D2 - SUITABLE FOR TENDER**

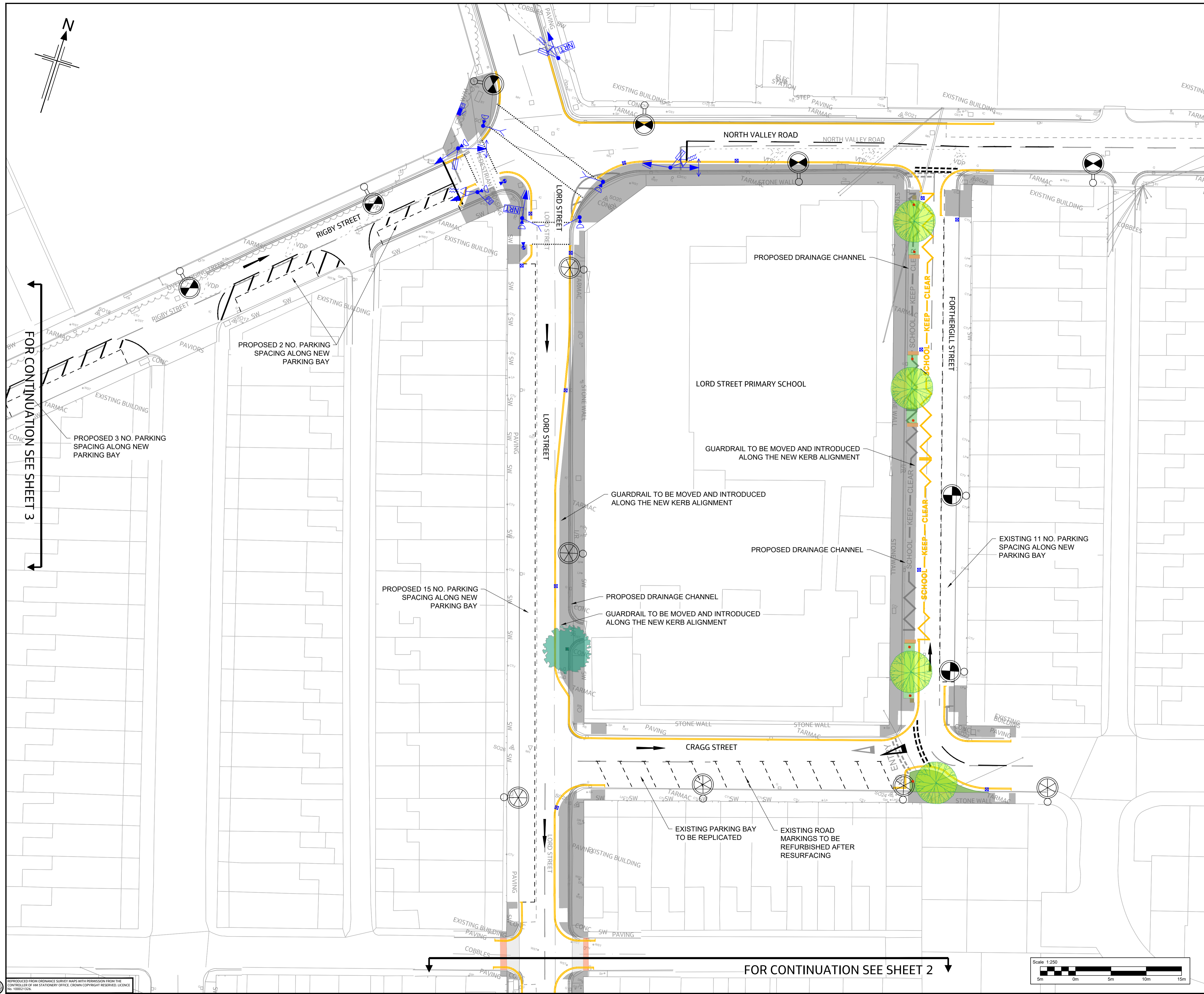
Scale	1:250	DO NOT SCALE
-------	-------	--------------

Jacobs No.	B2427722
Client no.	B2427722

Drawing number	B2427722-JAC-HGN-PE_01-DR-CH-0003	Rev	P03
----------------	-----------------------------------	-----	-----

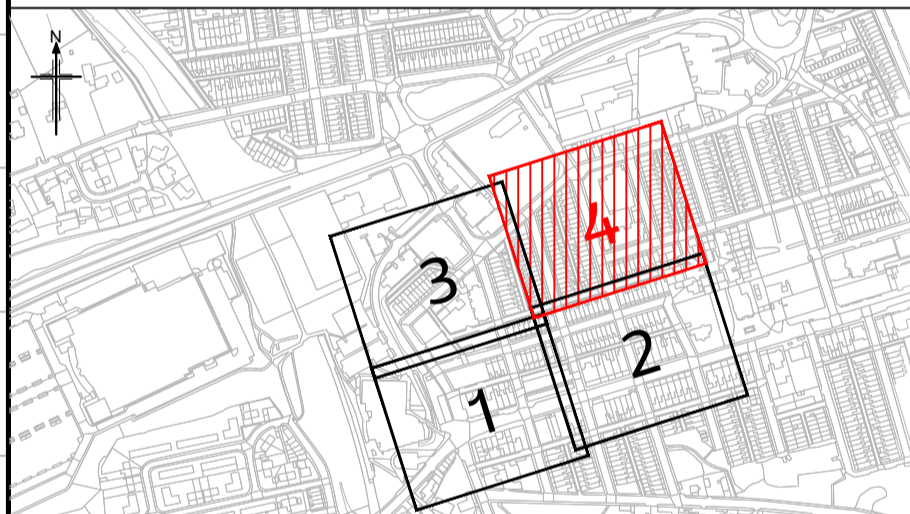
© Copyright 2024 Jacobs UK Limited. The concepts and information contained in this document are the property of Jacobs. Use or copying of this document in whole or in part without the written permission of Jacobs constitutes an infringement of copyright. Limitation: This drawing has been prepared on behalf of, and for the exclusive use of Jacobs Client, and is subject to, and issued in accordance with, the provisions of the contract between Jacobs and the Client. Jacobs accepts no liability or responsibility whatsoever for, or in respect of, any use of, or reliance upon, this drawing by any third party.

C:\pwworking\jacobs-emea-01\0410587\B2427722-JAC-HGN-PE\_01-DR-CH-0004.dwg - 18/12/2024 10:02:03 - SHEET 04 - Gandhik



1. All dimensions in metres unless stated otherwise.
2. Drawings to be printed in colour to enable correct viewing of symbols.
3. Do not scale from this drawing.
4. This drawing is to be read in conjunction with the associated contract series drawings, documents, and appendices.
5. The Contractor shall verify the presence and location of all services before undertaking any work in any area of the site before commencing the works.

- KEY:**
- Scheme boundary
  - - - Proposed kerb
  - - - Proposed drainage channel
  - Proposed tactile paving in buff colour (blister)
  - Proposed tactile paving in red colour (blister)
  - Proposed tactile paving at bus boarding area in buff colour (blister)
  - Proposed footway
  - Proposed raised table ramp
  - Proposed raised table
  - Proposed carriageway resurfacing
  - Existing cobbles refurbishment
  - Proposed road markings
  - Proposed sign and post / proposed sign face
  - Proposed traffic sign to be mounted on lighting column
  - Proposed asphalt concrete speed cushions
  - Proposed landscape arrangement. Refer to 3000 series drawings for details
  - Proposed bollards in Marshalls RB109, colour in black, or similar approved
  - Proposed pedestrian guardrails in Optitrail type V4, colour in blue, or similar approved
  - Proposed street lighting. Refer to 1300 series drawings for details
  - Proposed gully. Refer to 500 series drawings for details
  - Proposed traffic signals equipment. Refer to 1200 series drawings for details
  - Existing relocated traffic signals equipment. Refer to 1200 series drawings for details



LOCATION PLAN						
P01	02/09/24	SUITABLE FOR RSA 2 AUDIT	PP	GB	ML	AP
P02	04/10/24	SUITABLE FOR REVIEW & COMMENT	PP	GS	GS	PB
P03	17/12/24	SUITABLE FOR TENDER	PP	MG	ML	ML
Rev	Rev. Date	Purpose of revision	Drawn	Checked	Rev'd	Apprv'd

**Jacobs**  
7th Floor, 2 Colmore Square, 38 Colmore Circus  
Queensway, Birmingham, B4 6BN  
Tel: +44(0)121 237 4000 www.jacobs.com

Client  
**Lancashire County Council**

Project  
LUF Detailed Design

Drawing title  
**COLNE AREA  
GENERAL ARRANGEMENT  
SHEET 4 OF 4**

Drawing status  
**D2 - SUITABLE FOR TENDER**

Scale	1:250	DO NOT SCALE
Jacobs No.	B2427722	
Client no.	B2427722	

Drawing number	B2427722-JAC-HGN-PE_01-DR-CH-0004	Rev	P03
----------------	-----------------------------------	-----	-----

© Copyright 2024 Jacobs U.K. Limited. The concepts and information contained in this document are the property of Jacobs. Use or copying of this document in whole or in part without the written permission of Jacobs constitutes an infringement of copyright. Limitation: This drawing has been prepared on behalf of, and for the exclusive use of Jacobs Client, and is subject to, and issued in accordance with, the provisions of the contract between Jacobs and the Client. Jacobs accepts no liability or responsibility whatsoever for or in respect of, any use of, or reliance upon, this drawing by any third party.