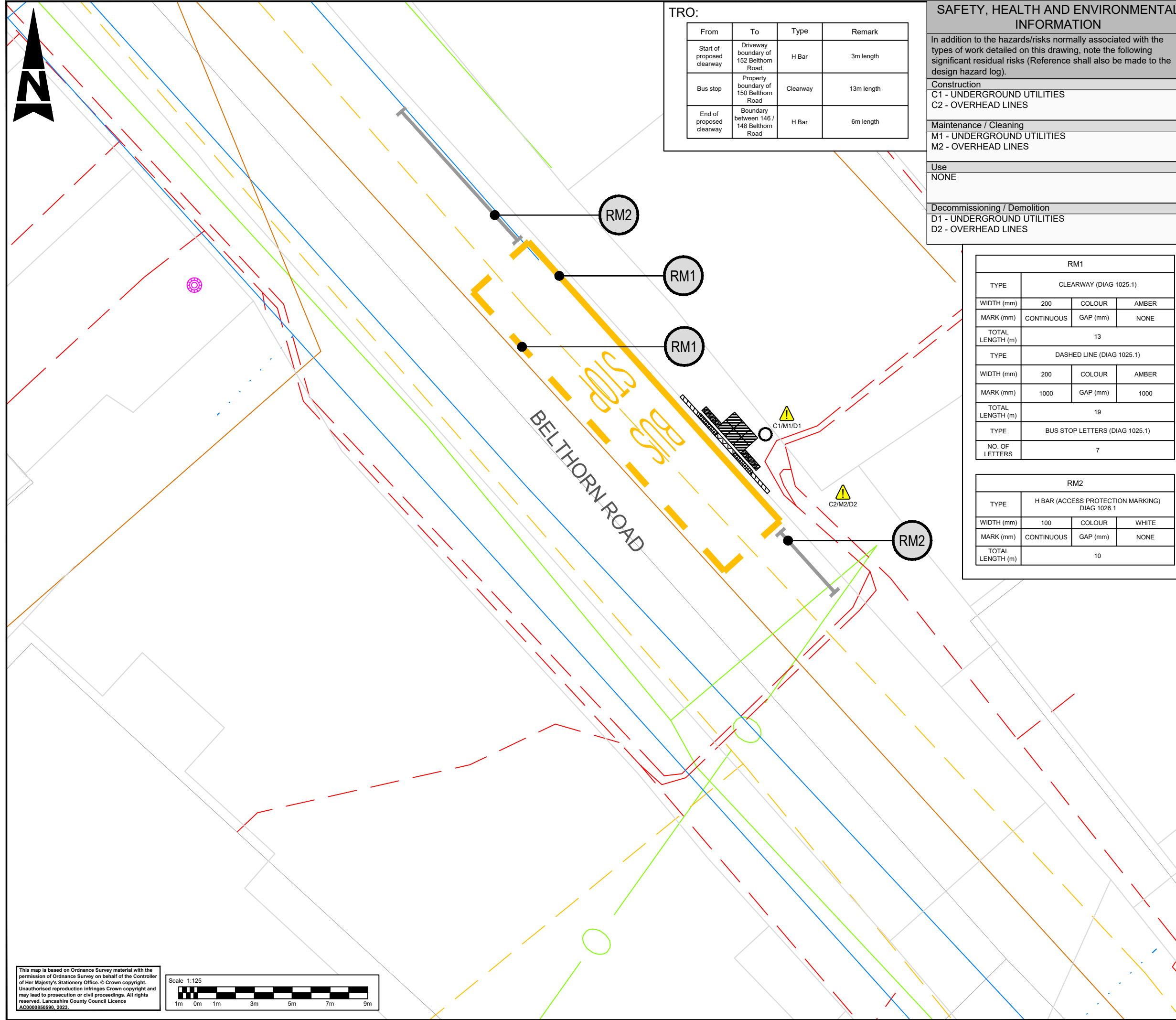


DO NOT SCALE

Millimetres

10

0



**TRO:**

From	To	Type	Remark
Start of proposed clearway	Driveway boundary of 152 Belthorn Road	H Bar	3m length
Bus stop	Property boundary of 150 Belthorn Road	Clearway	13m length
End of proposed clearway	Boundary between 146 / 148 Belthorn Road	H Bar	6m length

**SAFETY, HEALTH AND ENVIRONMENTAL INFORMATION**

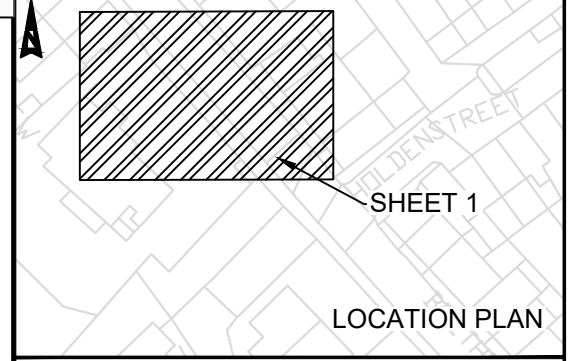
In addition to the hazards/risks normally associated with the types of work detailed on this drawing, note the following significant residual risks (Reference shall also be made to the design hazard log).

<b>Construction</b>
C1 - UNDERGROUND UTILITIES
C2 - OVERHEAD LINES
<b>Maintenance / Cleaning</b>
M1 - UNDERGROUND UTILITIES
M2 - OVERHEAD LINES
<b>Use</b>
NONE
<b>Decommissioning / Demolition</b>
D1 - UNDERGROUND UTILITIES
D2 - OVERHEAD LINES

- KEY:**
- BUS STOP FLAG
  - 400x400 TACTILE PAVING
  - 200x100 TACTILE PAVING
  - BULLNOSE KERB 160 FACE
  - BULLNOSE KERB 160 TO 130 FACE
  - TRANSITION KERB 130 TO 100 FACE
  - BUS STOP MARKINGS
  - H BAR
  - HSE HAZARD TRIANGLE FOR MORE INFORMATION REFER TO SHE BOX
- NOTES:**
- REFER TO LCC STANDARD BUS STOP DETAIL DRAWING FOR DIMENSIONS OF THE TACTILE PAVING, KERB DIMENSIONS (TYPES) AND KERB HEIGHTS
  - REFER TO DRAWING LCCBSA-ATK-HGN-ZZ-DR-CH-000045 FOR THE UTILITIES KEY
  - FEEDER PILLAR NOT PRESENT - SOLAR POWER TO BE PROVIDED
  - MATERIALS USED ON THE LAYOUT DRAWINGS ARE TO MATCH EXISTING MATERIALS ON SITE

RM1			
TYPE	CLEARWAY (DIAG 1025.1)		
WIDTH (mm)	200	COLOUR	AMBER
MARK (mm)	CONTINUOUS	GAP (mm)	NONE
TOTAL LENGTH (m)	13		
TYPE	DASHED LINE (DIAG 1025.1)		
WIDTH (mm)	200	COLOUR	AMBER
MARK (mm)	1000	GAP (mm)	1000
TOTAL LENGTH (m)	19		
TYPE	BUS STOP LETTERS (DIAG 1025.1)		
NO. OF LETTERS	7		

RM2			
TYPE	H BAR (ACCESS PROTECTION MARKING) DIAG 1026.1		
WIDTH (mm)	100	COLOUR	WHITE
MARK (mm)	CONTINUOUS	GAP (mm)	NONE
TOTAL LENGTH (m)	10		



Description						
Status	Rev	Drawn	Chk'd	Rev'd	Auth	Issue Date
Description						
Status	Rev	Drawn	Chk'd	Rev'd	Auth	Issue Date
Description						
Status	Rev	Drawn	Chk'd	Rev'd	Auth	Issue Date
A1	C01	KW	HK	JK	JK	14/02/24
Description						
Status	Rev	Drawn	Chk'd	Rev'd	Auth	Issue Date
A1	C02	KW	HK	JK	JK	24/04/24
Status	Drawing Suitability					
A1	APPROVED - PUBLISHED					

**AtkinsRéalis** Chadwick House  
Birchwood Park  
Warrington  
WA3 6AE

Tel: +44 (0)1925 238000  
Fax: +44 (0)1925 238500

Copyright © AtkinsRéalis (2023) www.AtkinsRealis.com

Client

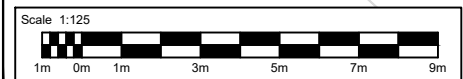
**Lancashire County Council**

Project Title  
EAST LANCASHIRE LUF BUS STOP ACCESSIBILITY IMPROVEMENTS

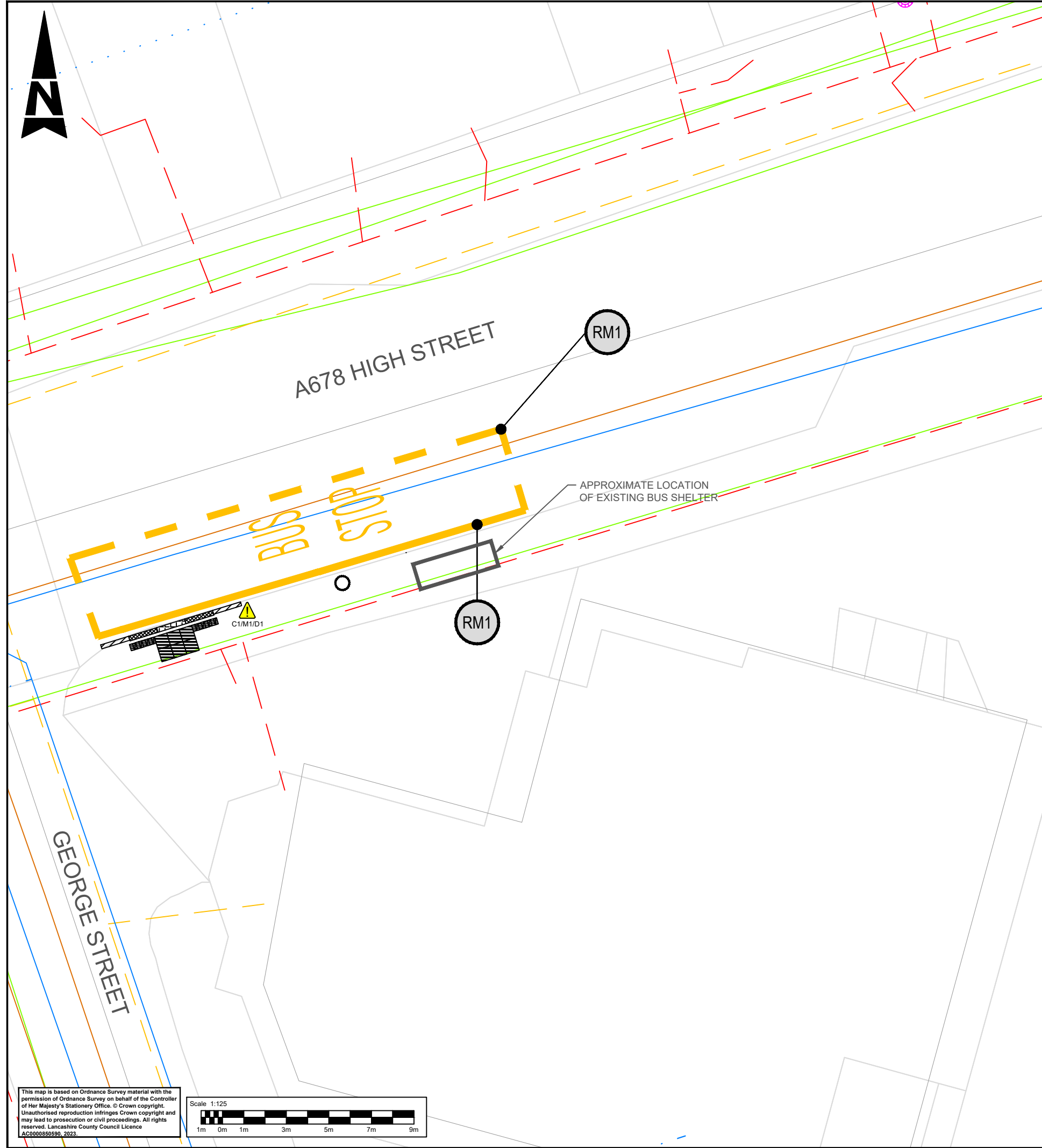
Drawing Title  
BELTHORN ROAD - BELTHORN  
BUS STOP ID: 250010282  
DETAILED DESIGN

Drawing Number	Project	Originator	Functional Breakdown
	LCCBSA	ATK	HGN
		ZZ	DR - CH - 000014
Spatial Breakdown	Form	Discipline	Number
Original Size:	A3	Scale:	1:125
		Project Ref. No:	5226062
		Sheet:	1 of 1
		Rev:	C02

This map is based on Ordnance Survey material with the permission of Ordnance Survey on behalf of the Controller of Her Majesty's Stationery Office. © Crown copyright. Unauthorised reproduction infringes Crown copyright and may lead to prosecution or civil proceedings. All rights reserved. Lancashire County Council Licence AC0000850590, 2023.



Millimetres  
100  
10  
0  
DO NOT SCALE



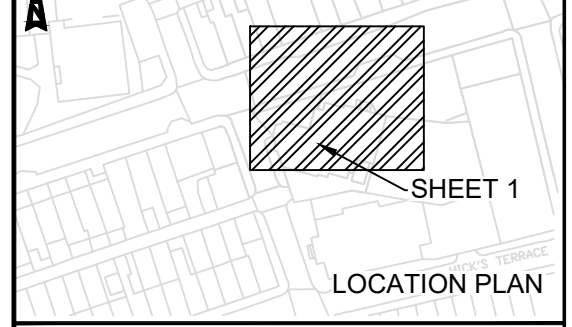
SAFETY, HEALTH AND ENVIRONMENTAL INFORMATION	
In addition to the hazards/risks normally associated with the types of work detailed on this drawing, note the following significant residual risks (Reference shall also be made to the design hazard log).	
Construction	C1 - UNDERGROUND UTILITIES
Maintenance / Cleaning	M1 - UNDERGROUND UTILITIES
Use	NONE
Decommissioning / Demolition	D1 - UNDERGROUND UTILITIES

KEY:	
	BUS STOP FLAG
	400x400 TACTILE PAVING
	200x100 TACTILE PAVING
	BULLNOSE KERB 160 FACE
	BULLNOSE KERB 160 TO 130 FACE
	TRANSITION KERB 130 TO 100 FACE
	BUS STOP MARKINGS
	HSE HAZARD TRIANGLE FOR MORE INFORMATION REFER TO SHE BOX

NOTES:

- REFER TO LCC STANDARD BUS STOP DETAIL DRAWING FOR DIMENSIONS OF THE TACTILE PAVING, KERB DIMENSIONS (TYPES) AND KERB HEIGHTS
- REFER TO DRAWING LCCBSA-ATK-HGN-ZZ-DR-CH-000045 FOR THE UTILITIES KEY
- FEEDER PILLAR NOT PRESENT - NEAREST POWER SOURCE IS A BELISHA BEACON AT THE LEFT OF THE SHELTER OVER 20M AWAY OR PROVIDE SOLAR POWER
- MATERIALS USED ON THE LAYOUT DRAWINGS ARE TO MATCH EXISTING MATERIALS ON SITE

RM1			
TYPE	CLEARWAY (DIAG 1025.1)		
WIDTH (mm)	200	COLOUR	AMBER
MARK (mm)	CONTINUOUS	GAP (mm)	NONE
TOTAL LENGTH (m)	14		
TYPE	DASHED LINE (DIAG 1025.1)		
WIDTH (mm)	200	COLOUR	AMBER
MARK (mm)	1000	GAP (mm)	1000
TOTAL LENGTH (m)	19		
TYPE	BUS STOP LETTERS (DIAG 1025.1)		
NO. OF LETTERS	7		



Description						
Status	Rev	Drawn	Chk'd	Rev'd	Auth	Issue Date
Description						
FIRST ISSUE						
A1	C01	KW	HK	JK	JK	14/02/24
Description						
SECOND ISSUE						
A1	C02	KW	HK	JK	JK	24/04/24
Description						
Drawing Suitability						
A1	APPROVED - PUBLISHED					

**AtkinsRéalis**  
 Chadwick House  
 Birchwood Park  
 Warrington  
 WA3 6AE  
 Tel: +44 (0)1925 238000  
 Fax: +44 (0)1925 238500  
 Copyright © AtkinsRéalis (2023) www.AtkinsRealis.com

Client

Project Title  
 EAST LANCASHIRE LUF BUS STOP ACCESSIBILITY IMPROVEMENTS  
 Drawing Title  
 HIGH STREET - RISHTON  
 BUS STOP ID: 2500159  
 DETAILED DESIGN

Drawing Number  
 Project Originator Functional Breakdown  
 LCCBSA - ATK - HGN -  
 ZZ - DR - CH - 000015  
 Spatial Breakdown Form Discipline Number  
 Original Scale: Project Ref. No: Sheet: Rev:  
 Size: A3 1:125 5226062 1 of 1 C02

TRO:			
From	To	Type	Remark
NO CHANGE			

This map is based on Ordnance Survey material with the permission of Ordnance Survey on behalf of the Controller of Her Majesty's Stationery Office. © Crown copyright. Unauthorised reproduction infringes Crown copyright and may lead to prosecution or civil proceedings. All rights reserved. Lancashire County Council Licence AC0000850590, 2023.  
 Scale 1:125

100  
10  
0  
Millimetres  
DO NOT SCALE



Library

RM1			
TYPE	CLEARWAY (DIAG 1025.1)		
WIDTH (mm)	200	COLOUR	AMBER
MARK (mm)	CONTINUOUS	GAP (mm)	NONE
TOTAL LENGTH (m)	27		
TYPE	DASHED LINE (DIAG 1025.1)		
WIDTH (mm)	200	COLOUR	AMBER
MARK (mm)	1000	GAP (mm)	1000
TOTAL LENGTH (m)	33		
TYPE	BUS STOP LETTERS (DIAG 1025.1)		
NO. OF LETTERS	14		

**SAFETY, HEALTH AND ENVIRONMENTAL INFORMATION**

In addition to the hazards/risks normally associated with the types of work detailed on this drawing, note the following significant residual risks (Reference shall also be made to the design hazard log).

**Construction**  
C1 - UNDERGROUND UTILITIES

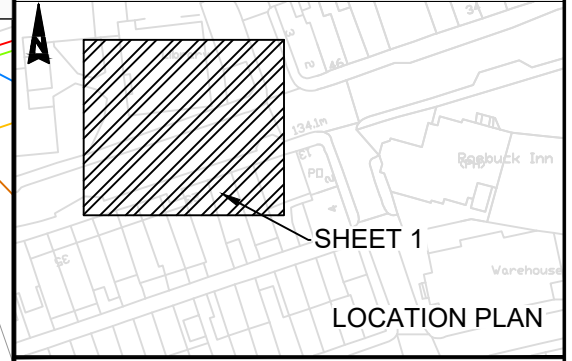
**Maintenance / Cleaning**  
M1 - UNDERGROUND UTILITIES

**Use**  
NONE

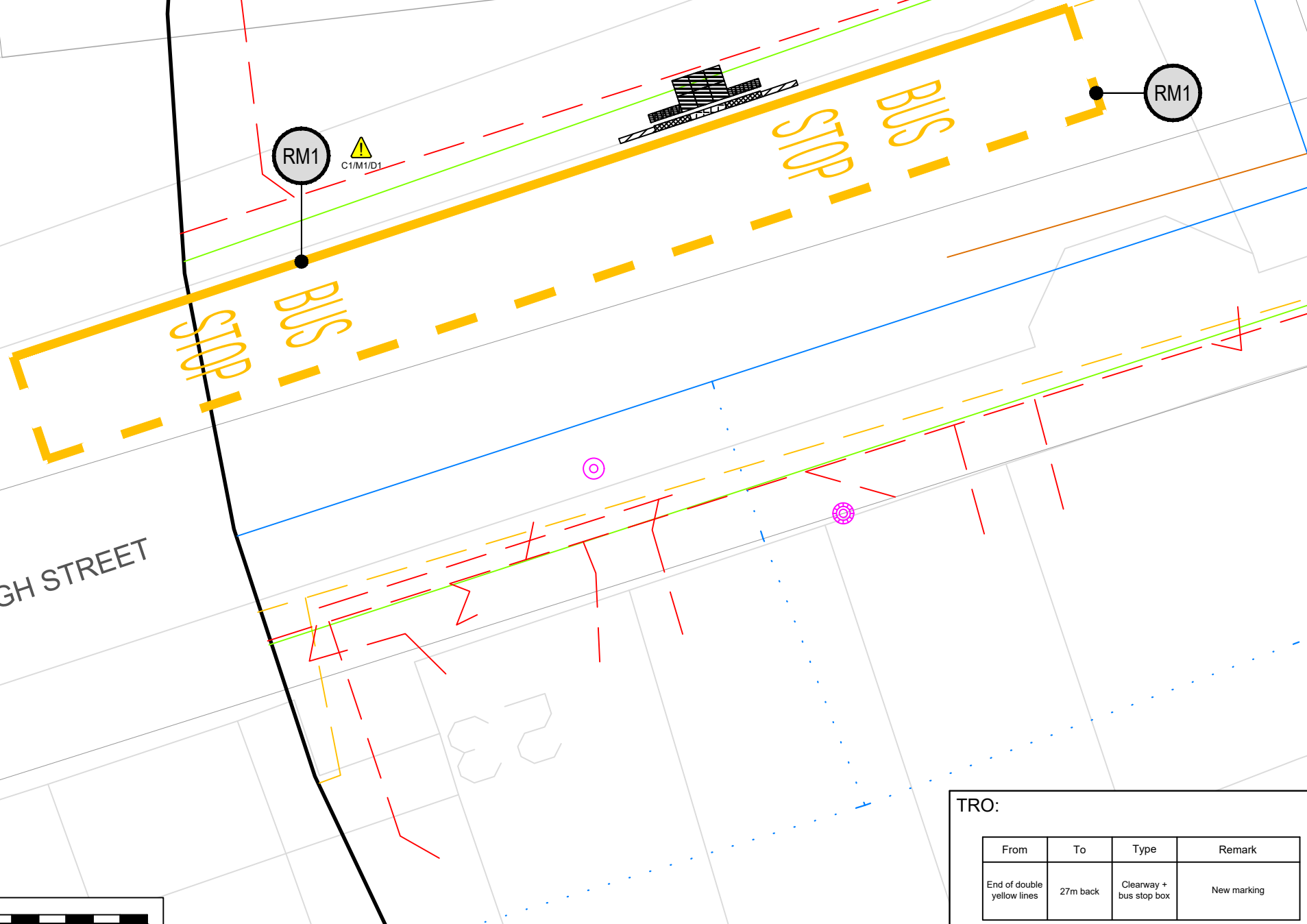
**Decommissioning / Demolition**  
D1 - UNDERGROUND UTILITIES

- KEY:**
- BUS STOP FLAG
  - 400x400 TACTILE PAVING
  - 200x100 TACTILE PAVING
  - BULLNOSE KERB 160 FACE
  - BULLNOSE KERB 160 TO 130 FACE
  - TRANSITION KERB 130 TO 100 FACE
  - FEEDER PILLAR
  - BUS STOP MARKINGS
  - HSE HAZARD TRIANGLE FOR MORE INFORMATION REFER TO SHE BOX

- NOTES:**
1. REFER TO LCC STANDARD BUS STOP DETAIL DRAWING FOR DIMENSIONS OF THE TACTILE PAVING, KERB DIMENSIONS (TYPES) AND KERB HEIGHTS
  2. REFER TO DRAWING LCCBSA-ATK-HGN-ZZ-DR-CH-000045 FOR THE UTILITIES KEY
  3. BUS STOP RELOCATED FROM PROPERTY BOUNDARY OF 22 / 24 HIGH STREET. INSTALL NEW BUS SHELTER WITH RTI.
  4. MATERIALS USED ON THE LAYOUT DRAWINGS ARE TO MATCH EXISTING MATERIALS ON SITE



A678 HIGH STREET



Description						
Status	Rev	Drawn	Chk'd	Rev'd	Auth	Issue Date
Description						
FIRST ISSUE						
A1	C01	KW	HK	JK	JK	14/02/24
Description						
SECOND ISSUE						
A1	C02	KW	HK	JK	JK	24/04/24
Description						
DRAWING SUITABILITY						
A1	APPROVED - PUBLISHED					

**AtkinsRéalis** Chadwick House  
Birchwood Park  
Warrington  
WA3 6AE

Tel: +44 (0)1925 238000  
Fax: +44 (0)1925 238500

Copyright © AtkinsRéalis (2023) www.AtkinsRealis.com



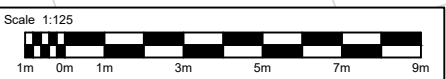
**Project Title**  
EAST LANCASHIRE LUF BUS STOP ACCESSIBILITY IMPROVEMENTS

**Drawing Title**  
HIGH STREET - RISHTON  
BUS STOP ID: 250012993  
DETAILED DESIGN

**TRO:**

From	To	Type	Remark
End of double yellow lines	27m back	Clearway + bus stop box	New marking

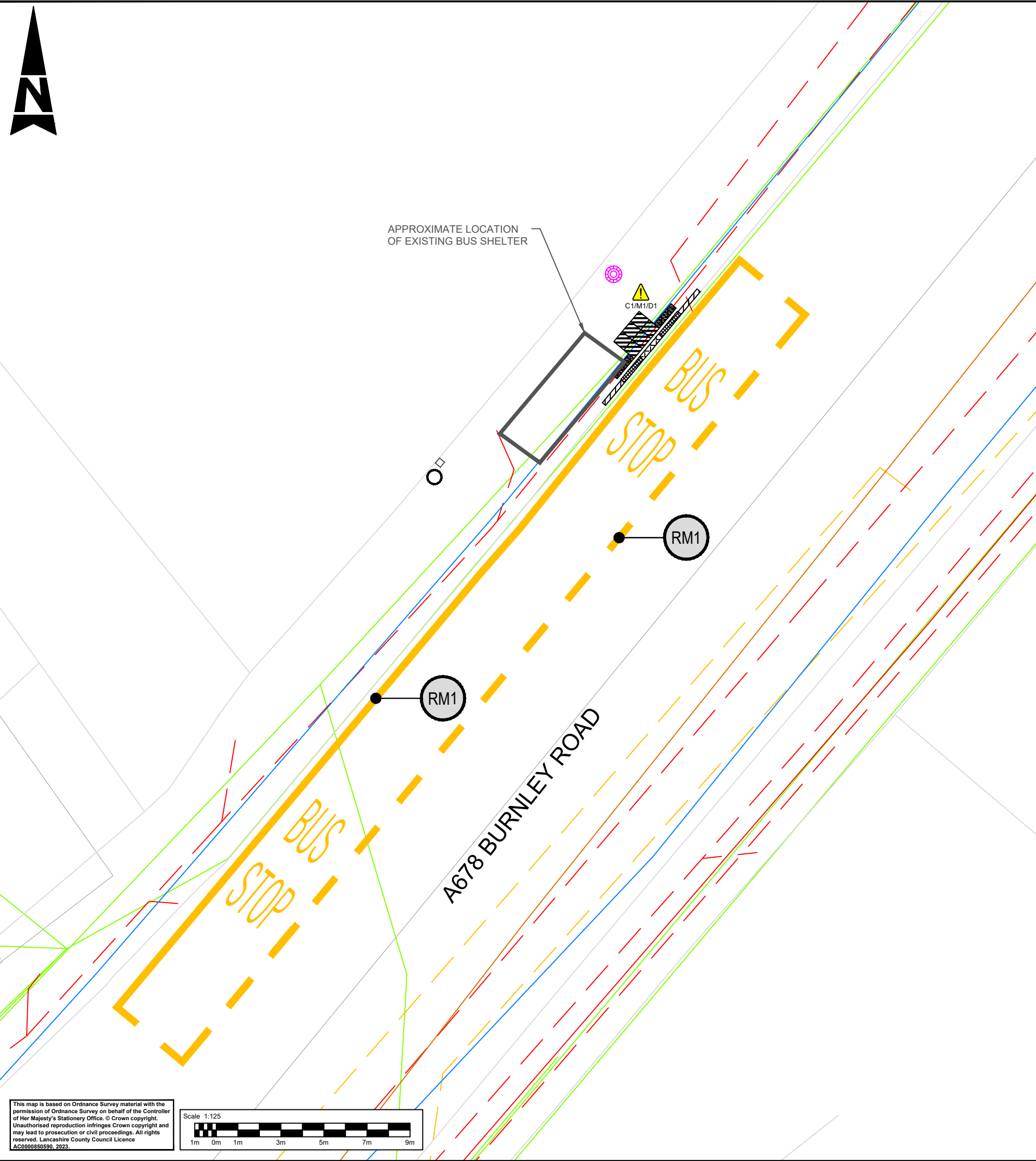
This map is based on Ordnance Survey material with the permission of Ordnance Survey on behalf of the Controller of Her Majesty's Stationery Office. © Crown copyright. Unauthorised reproduction infringes Crown copyright and may lead to prosecution or civil proceedings. All rights reserved. Lancashire County Council Licence AC0000850590, 2023.



<b>Drawing Number</b>	Project			<b>Originator</b>	<b>Functional Breakdown</b>
A3	LCCBSA	-	ATK	-	HGN -
			ZZ	-	DR - CH - 000016
<b>Spatial Breakdown</b>		<b>Form</b>	<b>Discipline</b>	<b>Number</b>	
Original	Scale:	Project Ref. No:	Sheet:	Rev:	
Size:	A3	5226062	1 of 1	C02	



100  
Millimetres  
10  
0  
DO NOT SCALE

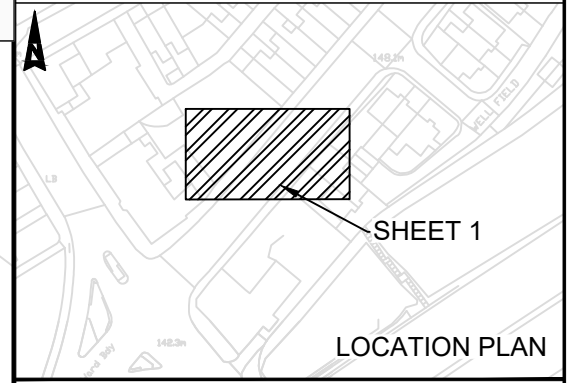


SAFETY, HEALTH AND ENVIRONMENTAL INFORMATION	
In addition to the hazards/risks normally associated with the types of work detailed on this drawing, note the following significant residual risks (Reference shall also be made to the design hazard log).	
Construction	C1 - UNDERGROUND UTILITIES
Maintenance / Cleaning	M1 - UNDERGROUND UTILITIES
Use	NONE
Decommissioning / Demolition	D1 - UNDERGROUND UTILITIES

KEY:	
	BUS STOP FLAG
	400x400 TACTILE PAVING
	200x100 TACTILE PAVING
	BULLNOSE KERB 160 FACE
	BULLNOSE KERB 160 TO 130 FACE
	TRANSITION KERB 130 TO 100 FACE
	FEEDER PILLAR
	BUS STOP MARKINGS
	HSE HAZARD TRIANGLE FOR MORE INFORMATION REFER TO SHE BOX

NOTES:

- REFER TO LCC STANDARD BUS STOP DETAIL DRAWING FOR DIMENSIONS OF THE TACTILE PAVING, KERB DIMENSIONS (TYPES) AND KERB HEIGHTS
- REFER TO DRAWING LCCBSA-ATK-HGN-ZZ-DR-CH-000045 FOR THE UTILITIES KEY
- NEW SHELTER WITH RTI TO BE FITTED
- MATERIALS USED ON THE LAYOUT DRAWINGS ARE TO MATCH EXISTING MATERIALS ON SITE



Description						
Status	Rev	Drawn	Chk'd	Rev'd	Auth	Issue Date
Description						
FIRST ISSUE						
A1	C01	KW	HK	JK	JK	14/02/24
Description						
SECOND ISSUE						
A1	C02	KW	HK	JK	JK	24/04/24
A1	D1 - UNDERGROUND UTILITIES					
Description						
APPROVED - PUBLISHED						

**AtkinsRéalis**

Chadwick House  
Birchwood Park  
Warrington  
WA3 6AE

Tel: +44 (0)1925 238000  
Fax: +44 (0)1925 238500

Copyright © AtkinsRéalis (2023) www.AtkinsRealis.com

Client

**Lancashire County Council**

Project Title  
EAST LANCASHIRE LUF BUS STOP ACCESSIBILITY IMPROVEMENTS

Drawing Title  
BURNLEY ROAD - CLAYTON LE MOORS  
BUS STOP ID: 2500DCL460  
DETAILED DESIGN

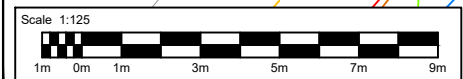
Drawing Number	Project	Originator	Functional Breakdown
A3	LCCBSA	ATK	HGN
Scale:	ZZ	DR	CH
1:125	000017		
Project Ref. No:	Sheet:	Rev:	
5226062	1 of 1	C02	

RM1			
CLEARWAY (DIAG 1025.1)			
TYPE	WIDTH (mm)	COLOUR	AMBER
MARK (mm)	CONTINUOUS	GAP (mm)	NONE
TOTAL LENGTH (m)	30		
DASHED LINE (DIAG 1025.1)			
TYPE	WIDTH (mm)	COLOUR	AMBER
MARK (mm)	1000	GAP (mm)	1000
TOTAL LENGTH (m)	35		
BUS STOP LETTERS (DIAG 1025.1)			
NO. OF LETTERS	14		

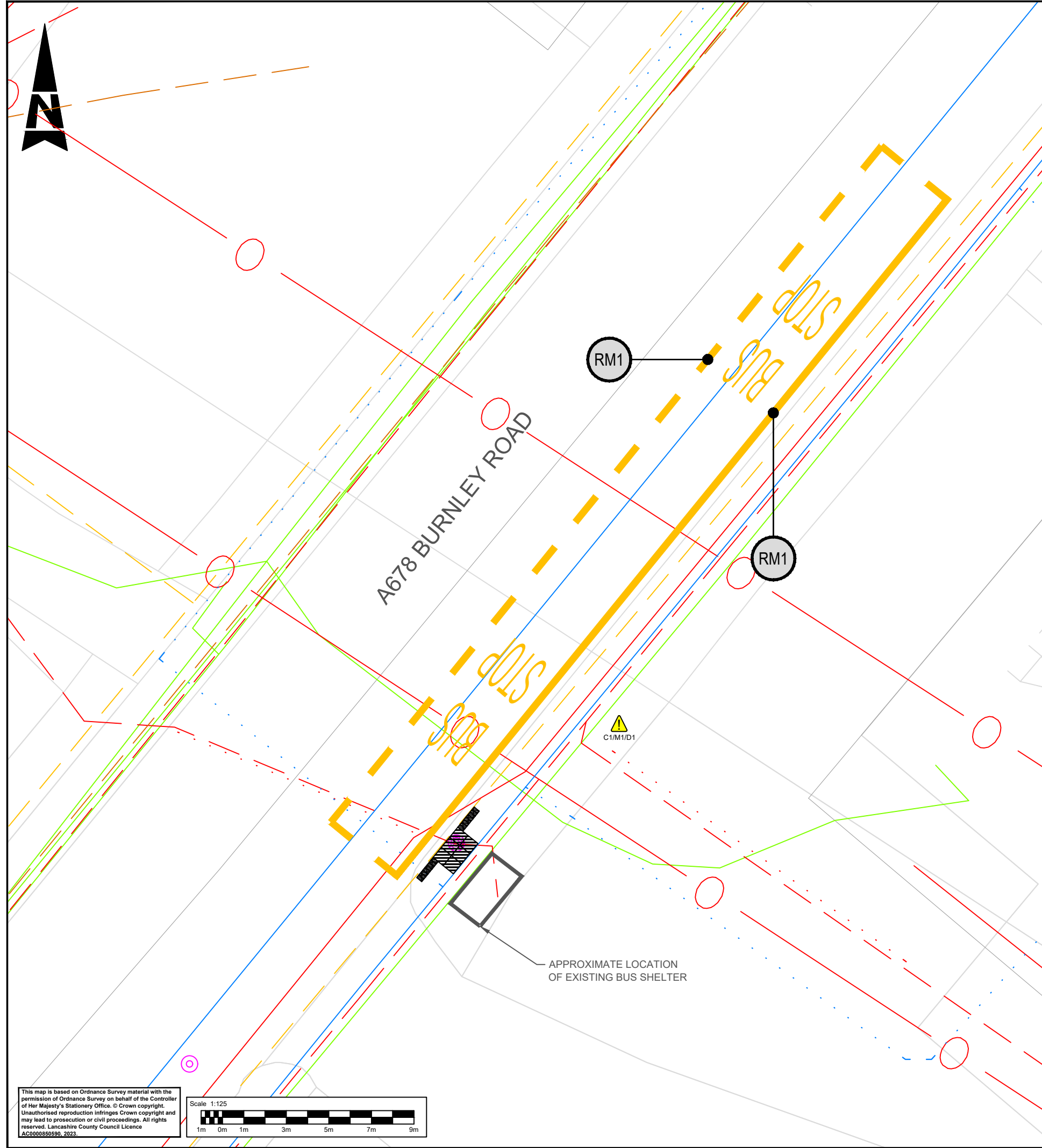
TRO:

From	To	Type	Remark
Dropped kerb of entrance to car park	27m back	Single yellow line	To be removed and remarked with clearway and bus box

This map is based on Ordnance Survey material with the permission of Ordnance Survey on behalf of the Controller of Her Majesty's Stationery Office. © Crown copyright. Unauthorised reproduction infringes Crown copyright and may lead to prosecution or civil proceedings. All rights reserved. Lancashire County Council Licence AC0000850590, 2023.



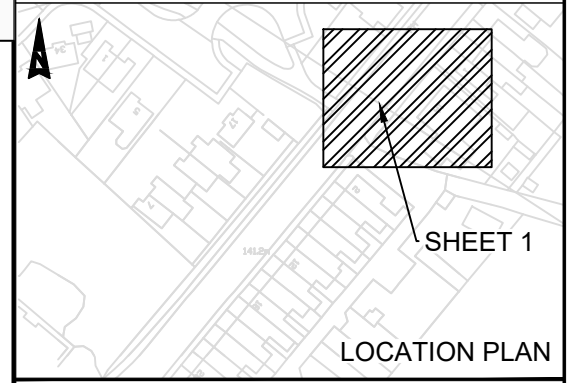
Millimetres  
100  
10  
0  
DO NOT SCALE



SAFETY, HEALTH AND ENVIRONMENTAL INFORMATION	
In addition to the hazards/risks normally associated with the types of work detailed on this drawing, note the following significant residual risks (Reference shall also be made to the design hazard log).	
Construction	C1 - UNDERGROUND UTILITIES
Maintenance / Cleaning	M1 - UNDERGROUND UTILITIES
Use	NONE
Decommissioning / Demolition	D1 - UNDERGROUND UTILITIES

RM1			
TYPE	CLEARWAY (DIAG 1025.1)		
WIDTH (mm)	200	COLOUR	AMBER
MARK (mm)	CONTINUOUS	GAP (mm)	NONE
TOTAL LENGTH (m)	27		
TYPE	DASHED LINE (DIAG 1025.1)		
WIDTH (mm)	200	COLOUR	AMBER
MARK (mm)	1000	GAP (mm)	1000
TOTAL LENGTH (m)	33		
TYPE	BUS STOP LETTERS (DIAG 1025.1)		
NO. OF LETTERS	14		

- KEY:**
- BUS STOP FLAG
  - 400x400 TACTILE PAVING
  - 200x100 TACTILE PAVING
  - BUS STOP MARKINGS
  - HSE HAZARD TRIANGLE FOR MORE INFORMATION REFER TO SHE BOX
- NOTES:**
- REFER TO LCC STANDARD BUS STOP DETAIL DRAWING FOR DIMENSIONS OF THE TACTILE PAVING. THE EXISTING SUB-STANDARD BOARDING POINT DUE TO SITE CONSTRAINTS (VEHICLE ACCESSES ON BOTH SIDES OF THE SHELTER) AND THE PRESENCE OF AN INSPECTION CHAMBER (TO REMAIN UNTOUCHED) IN CLOSE VICINITY TO THE SHELTER.
  - REFER TO DRAWING LCCBSA-ATK-HGN-ZZ-DR-CH-000045 FOR THE UTILITIES KEY
  - NO FEEDER PILLAR PRESENT - POWER TO BE SUPPLIED BY LAMPOST NEXT TO BUS STOP
  - MATERIALS USED ON THE LAYOUT DRAWINGS ARE TO MATCH EXISTING MATERIALS ON SITE



Description						
Status	Rev	Drawn	Chk'd	Rev'd	Auth	Issue Date
Description						
FIRST ISSUE						
Status	Rev	Drawn	Chk'd	Rev'd	Auth	Issue Date
A1	C01	KW	HK	JK	JK	14/02/24
Description						
SECOND ISSUE						
Status	Rev	Drawn	Chk'd	Rev'd	Auth	Issue Date
A1	C02	KW	HK	JK	JK	24/04/24
Status	Drawing Suitability					
A1	APPROVED - PUBLISHED					

**AtkinsRéalis**

Chadwick House  
Birchwood Park  
Warrington  
WA3 6AE

Tel: +44 (0)1925 238000  
Fax: +44 (0)1925 238500

Copyright © AtkinsRéalis (2023) www.AtkinsRealis.com



**Project Title**  
EAST LANCASHIRE LUF BUS STOP ACCESSIBILITY IMPROVEMENTS

**Drawing Title**  
BURNLEY ROAD - ALTHAM  
BUS STOP ID: 2500IMG2370  
DETAILED DESIGN

<b>Drawing Number</b>	Project			Originator	Functional Breakdown	
	LCCBSA	-	ATK	-	HGN	-
			ZZ	-	DR	-
				-	CH	-
						000018
<b>Spatial Breakdown</b>	Form	Discipline	Number			
Original Size:	A3	Scale:	1:125	Project Ref. No:	5226062	Sheet: 1 of 1
				Rev:	C02	

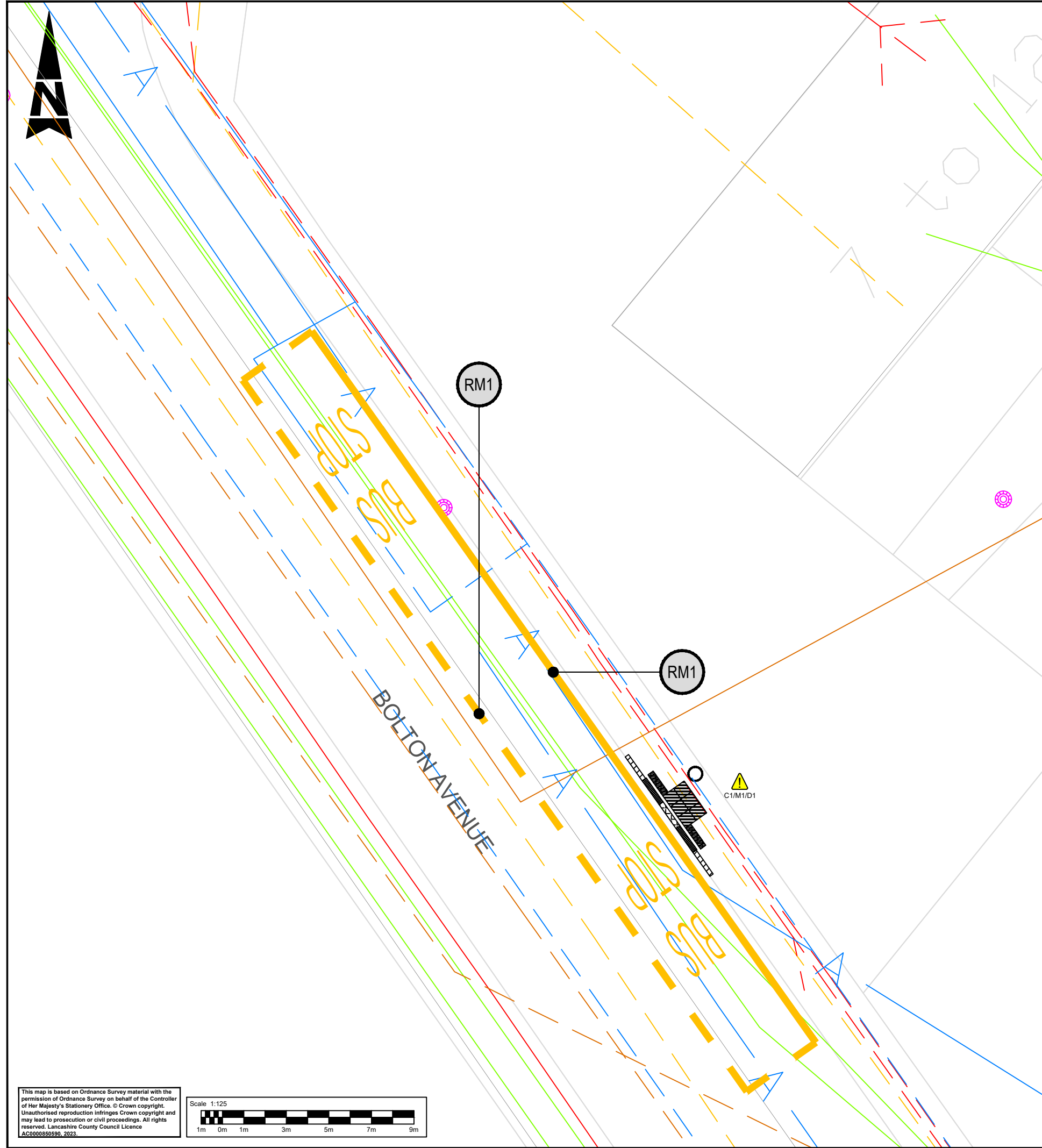
**TRO:**

From	To	Type	Remark
Corner of side road access	Property Boundary of 1 Pendle View	Clearway + Bus box	New road marking

This map is based on Ordnance Survey material with the permission of Ordnance Survey on behalf of the Controller of Her Majesty's Stationery Office. © Crown copyright. Unauthorised reproduction infringes Crown copyright and may lead to prosecution or civil proceedings. All rights reserved. Lancashire County Council Licence AC000850590, 2023.

Scale 1:125

Millimetres  
100  
10  
0  
DO NOT SCALE

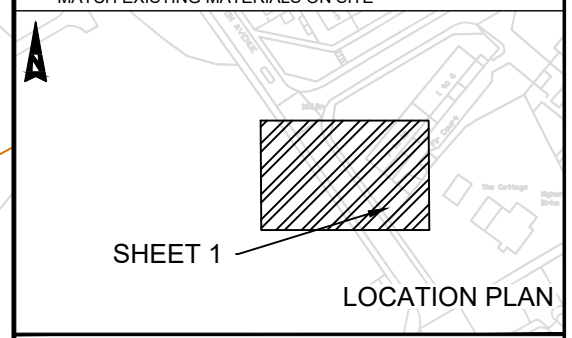


SAFETY, HEALTH AND ENVIRONMENTAL INFORMATION	
In addition to the hazards/risks normally associated with the types of work detailed on this drawing, note the following significant residual risks (Reference shall also be made to the design hazard log).	
Construction	C1 - UNDERGROUND UTILITIES
Maintenance / Cleaning	M1 - UNDERGROUND UTILITIES
Use	NONE
Decommissioning / Demolition	D1 - UNDERGROUND UTILITIES

KEY:	
	BUS STOP FLAG
	400x400 TACTILE PAVING
	200x100 TACTILE PAVING
	BULLNOSE KERB 160 FACE
	BULLNOSE KERB 160 TO 130 FACE
	TRANSITION KERB 130 TO 100 FACE
	BUS STOP MARKINGS
	HSE HAZARD TRIANGLE FOR MORE INFORMATION REFER TO SHE BOX

NOTES:

- REFER TO LCC STANDARD BUS STOP DETAIL DRAWING FOR DIMENSIONS OF THE TACTILE PAVING, KERB DIMENSIONS (TYPES) AND KERB HEIGHTS
- REFER TO DRAWING LCCBSA-ATK-HGN-ZZ-DR-CH-000045 FOR THE UTILITIES KEY
- NO FEEDER PILLAR PRESENT - POWER TO BE SUPPLIED BY LAMPOST NEAR TO THE PROPOSED LOCATION OF BUS STOP
- BUS STOP HAS BEEN RELOCATED TO BE OPPOSITE 2500DCL551
- MATERIALS USED ON THE LAYOUT DRAWINGS ARE TO MATCH EXISTING MATERIALS ON SITE



Description						
Status	Rev	Drawn	Chk'd	Rev'd	Auth	Issue Date
Description						
FIRST ISSUE						
A1	C01	KW	HK	JK	JK	14/02/24
Description						
SECOND ISSUE						
A1	C02	KW	HK	JK	JK	24/04/24
A1	Drawing Suitability APPROVED - PUBLISHED					

**AtkinsRéalis**

Chadwick House  
Birchwood Park  
Warrington  
WA3 6AE

Tel: +44 (0)1925 238000  
Fax: +44 (0)1925 238500

Copyright © AtkinsRéalis (2023) www.AtkinsRealis.com

Client

**Lancashire County Council**

Project Title  
EAST LANCASHIRE LUF BUS STOP ACCESSIBILITY IMPROVEMENTS

Drawing Title  
BOLTON AVENUE - HUNCOAT  
BUS STOP ID: 2500723  
DETAILED DESIGN

Drawing Number	Project	Originator	Functional Breakdown
	LCCBSA	- ATK - HGN - ZZ	- DR - CH - 000019
Spatial Breakdown	Form	Discipline	Number
Original Size:	A3	Scale: 1:125	Project Ref. No: 5226062
			Sheet: 1 of 1
			Rev: C02

RM1			
CLEARWAY (DIAG 1025.1)			
TYPE	WIDTH (mm)	COLOUR	AMBER
	200		
MARK (mm)	CONTINUOUS	GAP (mm)	NONE
TOTAL LENGTH (m)	27		
DASHED LINE (DIAG 1025.1)			
TYPE	WIDTH (mm)	COLOUR	AMBER
	200		
MARK (mm)	1000	GAP (mm)	1000
TOTAL LENGTH (m)	33		
BUS STOP LETTERS (DIAG 1025.1)			
TYPE	BUS STOP LETTERS (DIAG 1025.1)		
NO. OF LETTERS	14		

TRO:

From	To	Type	Remark
Boundary between the apartment and property where the opposite bus stop flag is	27m from start point	Clearway	New

This map is based on Ordnance Survey material with the permission of Ordnance Survey on behalf of the Controller of Her Majesty's Stationery Office. © Crown copyright. Unauthorised reproduction infringes Crown copyright and may lead to prosecution or civil proceedings. All rights reserved. Lancashire County Council Licence AC0000850590, 2023.

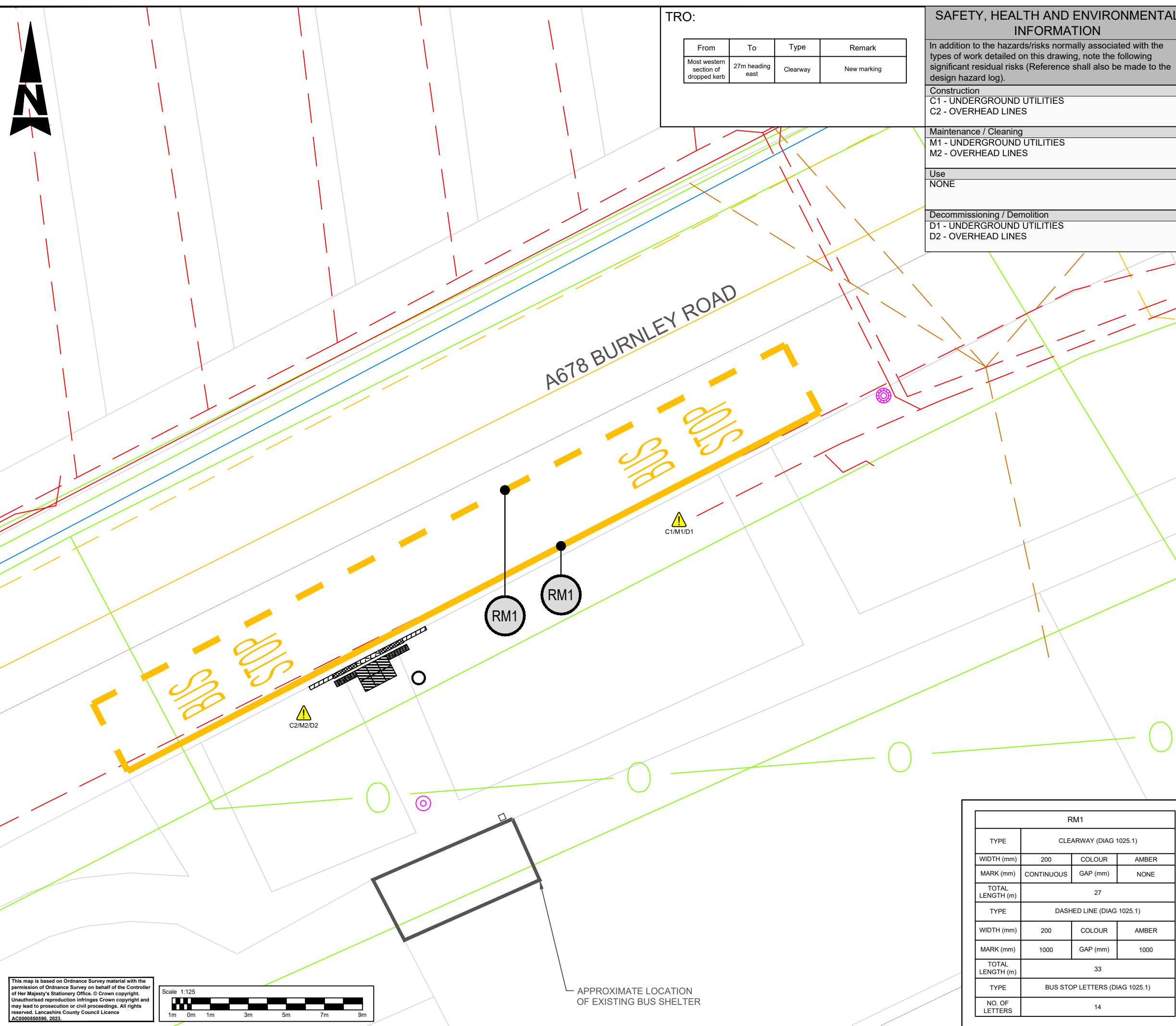
Scale 1:125



DO NOT SCALE

100  
Millimetres

10  
0



TRO:

From	To	Type	Remark
Most western section of dropped kerb	27m heading east	Clearway	New marking

**SAFETY, HEALTH AND ENVIRONMENTAL INFORMATION**

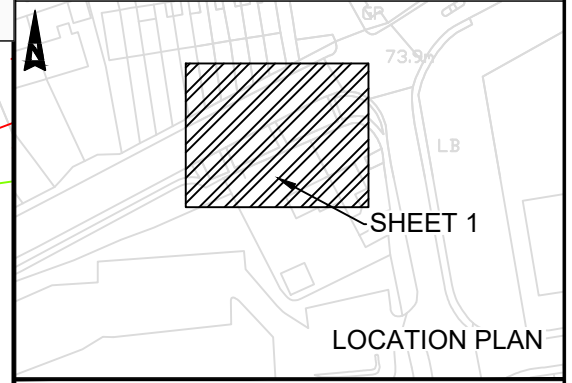
In addition to the hazards/risks normally associated with the types of work detailed on this drawing, note the following significant residual risks (Reference shall also be made to the design hazard log).

<b>Construction</b>
C1 - UNDERGROUND UTILITIES
C2 - OVERHEAD LINES
<b>Maintenance / Cleaning</b>
M1 - UNDERGROUND UTILITIES
M2 - OVERHEAD LINES
<b>Use</b>
NONE
<b>Decommissioning / Demolition</b>
D1 - UNDERGROUND UTILITIES
D2 - OVERHEAD LINES

**KEY:**

- BUS STOP FLAG
- 400x400 TACTILE PAVING
- 200x100 TACTILE PAVING
- BULLNOSE KERB 160 FACE
- BULLNOSE KERB 160 TO 130 FACE
- TRANSITION KERB 130 TO 100 FACE
- FEEDER PILLAR
- BUS STOP MARKINGS
- HSE HAZARD TRIANGLE FOR MORE INFORMATION REFER TO SHE BOX

- NOTES:**
- REFER TO LCC STANDARD BUS STOP DETAIL DRAWING FOR DIMENSIONS OF THE TACTILE PAVING, KERB DIMENSIONS (TYPES) AND KERB HEIGHTS
  - REFER TO DRAWING LCCBSA-ATK-HGN-ZZ-DR-CH-000045 FOR THE UTILITIES KEY
  - POWERED POLE TO BE INSTALLED
  - MATERIALS USED ON THE LAYOUT DRAWINGS ARE TO MATCH EXISTING MATERIALS ON SITE



Description						
Status	Rev	Drawn	Chk'd	Rev'd	Auth	Issue Date
Description						
FIRST ISSUE						
Status	Rev	Drawn	Chk'd	Rev'd	Auth	Issue Date
A1	C01	KW	HK	JK	JK	14/02/24
Description						
SECOND ISSUE						
Status	Rev	Drawn	Chk'd	Rev'd	Auth	Issue Date
A1	C02	KW	HK	JK	JK	24/04/24
Status	Drawing Suitability					
A1	APPROVED - PUBLISHED					

**AtkinsRéalis**

Chadwick House  
Birchwood Park  
Warrington  
WA3 6AE

Tel: +44 (0)1925 238000  
Fax: +44 (0)1925 238500

Copyright © AtkinsRéalis (2023) www.AtkinsRealis.com

Client

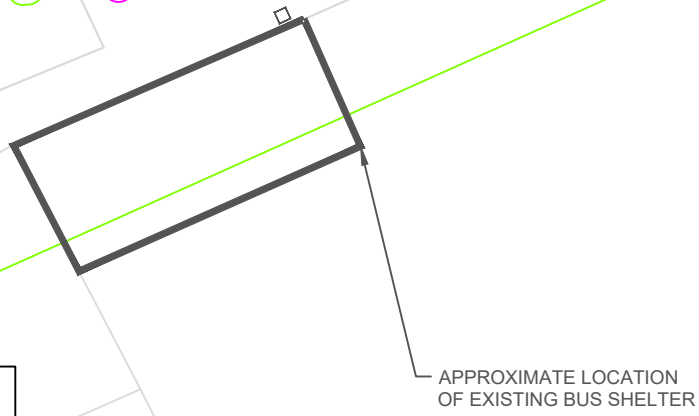
**Lancashire County Council**

Project Title  
EAST LANCASHIRE LUF BUS STOP ACCESSIBILITY IMPROVEMENTS

Drawing Title  
BURNLEY ROAD - ALTHAM  
BUS STOP ID: 2500736  
DETAILED DESIGN

Drawing Number	Project	Originator	Functional Breakdown
	LCCBSA	- ATK	- HGN
		ZZ	- DR - CH - 000034
Spatial Breakdown	Form	Discipline	Number
Original Size: A3	Scale: 1:125	Project Ref. No: 5226062	Sheet: 1 of 1
			Rev: C02

RM1			
TYPE	CLEARWAY (DIAG 1025.1)		
WIDTH (mm)	200	COLOUR	AMBER
MARK (mm)	CONTINUOUS	GAP (mm)	NONE
TOTAL LENGTH (m)	27		
TYPE	DASHED LINE (DIAG 1025.1)		
WIDTH (mm)	200	COLOUR	AMBER
MARK (mm)	1000	GAP (mm)	1000
TOTAL LENGTH (m)	33		
TYPE	BUS STOP LETTERS (DIAG 1025.1)		
NO. OF LETTERS	14		

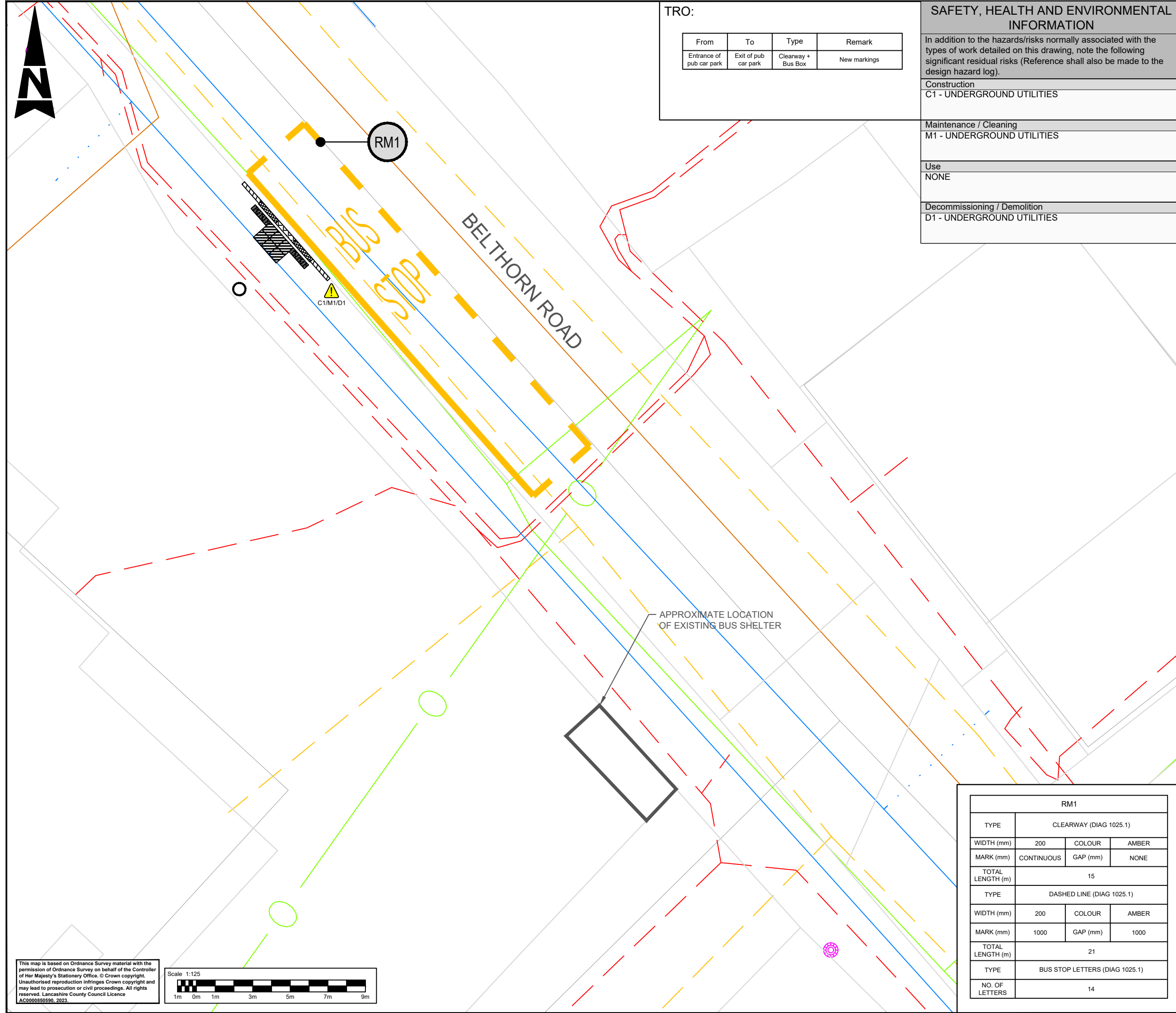


This map is based on Ordnance Survey material with the permission of Ordnance Survey on behalf of the Controller of Her Majesty's Stationery Office. © Crown copyright. Unauthorised reproduction infringes Crown copyright and may lead to prosecution or civil proceedings. All rights reserved. Lancashire County Council Licence AC0000850590, 2023.

Scale 1:125

DO NOT SCALE

Millimetres  
100  
10  
0



TRO:

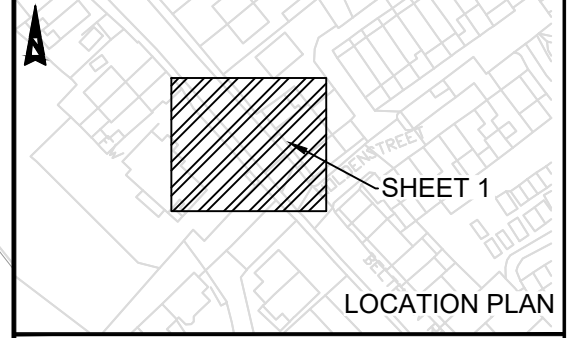
From	To	Type	Remark
Entrance of pub car park	Exit of pub car park	Clearway + Bus Box	New markings

**SAFETY, HEALTH AND ENVIRONMENTAL INFORMATION**

In addition to the hazards/risks normally associated with the types of work detailed on this drawing, note the following significant residual risks (Reference shall also be made to the design hazard log).

Construction	C1 - UNDERGROUND UTILITIES
Maintenance / Cleaning	M1 - UNDERGROUND UTILITIES
Use	NONE
Decommissioning / Demolition	D1 - UNDERGROUND UTILITIES

- KEY:**
- BUS STOP FLAG
  - 400x400 TACTILE PAVING
  - 200x100 TACTILE PAVING
  - BULLNOSE KERB 160 FACE
  - BULLNOSE KERB 160 TO 130 FACE
  - TRANSITION KERB 130 TO 100 FACE
  - BUS STOP MARKINGS
- NOTES:**
- REFER TO LCC STANDARD BUS STOP DETAIL DRAWING FOR DIMENSIONS OF THE TACTILE PAVING, KERB DIMENSIONS (TYPES) AND KERB HEIGHTS
  - REFER TO DRAWING LCCBSA-ATK-HGN-ZZ-DR-CH-000045 FOR THE UTILITIES KEY
  - NO FEEDER PILLAR PRESENT - POWER TO BE SUPPLIED BY LAMPPOST TO THE RIGHT OF BUS STOP
  - MATERIALS USED ON THE LAYOUT DRAWINGS ARE TO MATCH EXISTING MATERIALS ON SITE
  - THE EXACT LENGTH OF THE BUS BOX IS TO BE DETERMINED ON SITE BY MEASURING BETWEEN ENTRANCE AND EGRESS DROPPED KERBS



Description						
Status	Rev	Drawn	Chk'd	Rev'd	Auth	Issue Date
Description						
Status	Rev	Drawn	Chk'd	Rev'd	Auth	Issue Date
Description						
Status	Rev	Drawn	Chk'd	Rev'd	Auth	Issue Date
Description						
FIRST ISSUE						
Status	Rev	Drawn	Chk'd	Rev'd	Auth	Issue Date
A1	C01	KW	HK	JK	JK	25/04/24
Status	Drawing Suitability					
A1	APPROVED - PUBLISHED					

**AtkinsRéalis**

Chadwick House  
Birchwood Park  
Warrington  
WA3 6AE

Tel: +44 (0)1925 238000  
Fax: +44 (0)1925 238500

Copyright © AtkinsRéalis (2023) www.AtkinsRealis.com



Project Title			
EAST LANCASHIRE LUF BUS STOP ACCESSIBILITY IMPROVEMENTS			
Drawing Title			
BELTHORN ROAD - BELTHORN BUS STOP ID: 250010280 DETAILED DESIGN			
Drawing Number			
Project	Originator	Functional Breakdown	
LCCBSA	- ATK	- HGN -	
	ZZ	- DR - CH - 000046	
Spatial Breakdown			
Original Size:	A3	Scale:	1:125
Project Ref. No:	5226062	Sheet:	1 of 1
Rev:	C01		

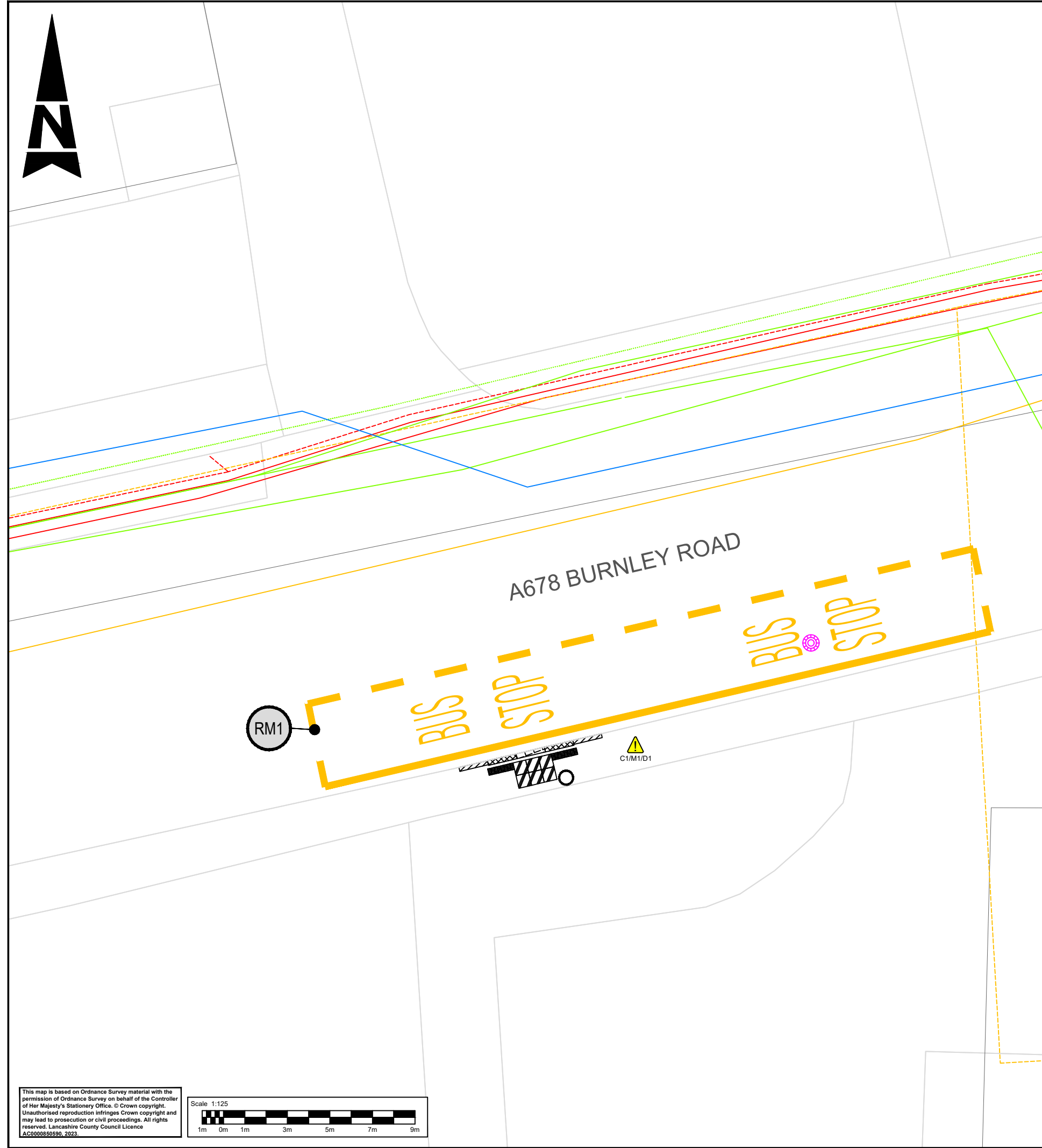
RM1			
TYPE	CLEARWAY (DIAG 1025.1)		
WIDTH (mm)	200	COLOUR	AMBER
MARK (mm)	CONTINUOUS	GAP (mm)	NONE
TOTAL LENGTH (m)	15		
TYPE	DASHED LINE (DIAG 1025.1)		
WIDTH (mm)	200	COLOUR	AMBER
MARK (mm)	1000	GAP (mm)	1000
TOTAL LENGTH (m)	21		
TYPE	BUS STOP LETTERS (DIAG 1025.1)		
NO. OF LETTERS	14		

This map is based on Ordnance Survey material with the permission of Ordnance Survey on behalf of the Controller of Her Majesty's Stationery Office. © Crown copyright. Unauthorised reproduction infringes Crown copyright and may lead to prosecution or civil proceedings. All rights reserved. Lancashire County Council Licence AC0000850590, 2023.

Scale 1:125



Millimetres  
100  
10  
0  
DO NOT SCALE



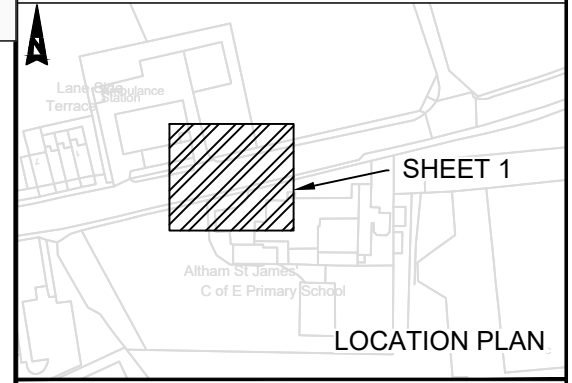
SAFETY, HEALTH AND ENVIRONMENTAL INFORMATION	
In addition to the hazards/risks normally associated with the types of work detailed on this drawing, note the following significant residual risks (Reference shall also be made to the design hazard log).	
Construction	C1 - UNDERGROUND UTILITIES
Maintenance / Cleaning	M1 - UNDERGROUND UTILITIES
Use	NONE
Decommissioning / Demolition	D1 - UNDERGROUND UTILITIES

RM1			
TYPE		CLEARWAY (DIAG 1025.1)	
WIDTH (mm)	200	COLOUR	AMBER
MARK (mm)	CONTINUOUS	GAP (mm)	NONE
TOTAL LENGTH (m)	21		
TYPE		DASHED LINE (DIAG 1025.1)	
WIDTH (mm)	200	COLOUR	AMBER
MARK (mm)	1000	GAP (mm)	1000
TOTAL LENGTH (m)	27		
TYPE		BUS STOP LETTERS (DIAG 1025.1)	
NO. OF LETTERS	14		

KEY:	
	BUS STOP FLAG
	400x400 TACTILE PAVING
	200x100 TACTILE PAVING
	BULLNOSE KERB 160 FACE
	BULLNOSE KERB 160 TO 130 FACE
	TRANSITION KERB 130 TO 100 FACE
	BUS STOP MARKINGS
	HSE HAZARD TRIANGLE FOR MORE INFORMATION REFER TO SHE BOX

NOTES:

- REFER TO LCC STANDARD BUS STOP DETAIL DRAWING FOR DIMENSIONS OF THE TACTILE PAVING, KERB DIMENSIONS (TYPES) AND KERB HEIGHTS
- REFER TO DRAWING LCCBSAP2-ATK-HGN-ZZ-DR-CH-000024 FOR THE UTILITIES KEY
- MATERIALS USED ON THE LAYOUT DRAWINGS ARE TO MATCH EXISTING MATERIALS ON SITE
- NO FEEDER PILLAR PRESENT - POWER TO BE SUPPLIED BY LIGHTING COLUMN LEFT OF BUS STOP



Description						
Status	Rev	Drawn	Chk'd	Rev'd	Auth	Issue Date
Description						
Status	Rev	Drawn	Chk'd	Rev'd	Auth	Issue Date
Description						
Status	Rev	Drawn	Chk'd	Rev'd	Auth	Issue Date
Description						
FIRST ISSUE						
Status	Rev	Drawn	Chk'd	Rev'd	Auth	Issue Date
A1	C01	KW	HK	HK	JK	24/05/24
Description						
Status	Drawing Suitability					
A1	APPROVED - PUBLISHED					

**AtkinsRéalis**  
 Chadwick House  
 Birchwood Park  
 Warrington  
 WA3 6AE  
 Tel: +44 (0)1925 238000  
 Fax: +44 (0)1925 238500  
 Copyright © AtkinsRéalis (2023) www.AtkinsRealis.com



Project Title  
 EAST LANCASHIRE LUF BUS STOP ACCESSIBILITY IMPROVEMENTS  
 Drawing Title  
 BURNLEY ROAD - ALTHAM  
 BUS STOP ID: 2500IMG2567  
 DETAILED DESIGN

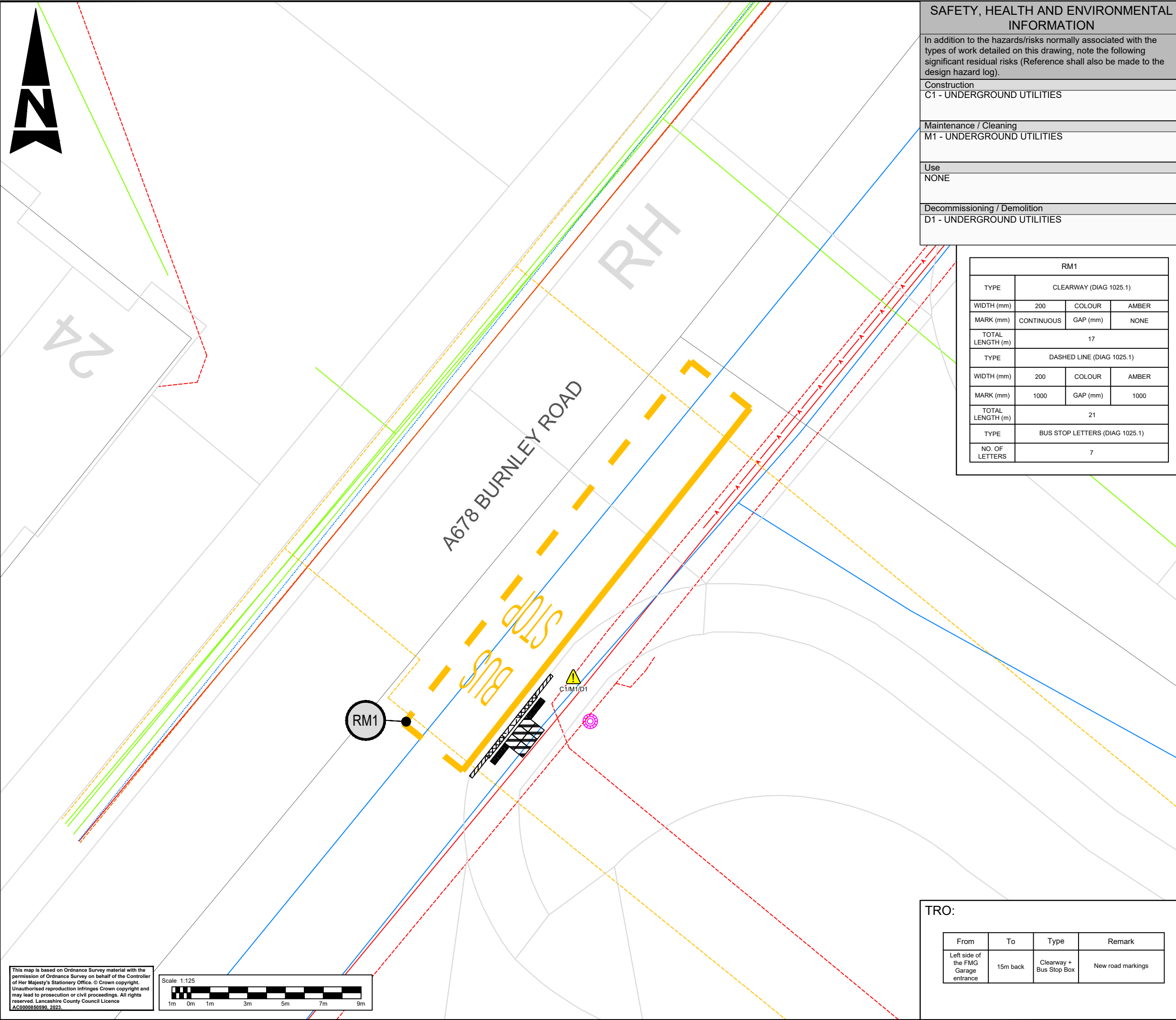
Drawing Number		Project		Originator		Functional Breakdown	
Original	A3	Scale:	1:125	Project Ref. No:	5226062	Sheet:	1 of 1
Size:	A3	Scale:	1:125	Project Ref. No:	5226062	Sheet:	1 of 1
Drawing Number		Project		Originator		Functional Breakdown	
LCCBSAP2		- ATK - HGN - ZZ - DR - CH - 000005		Form		Discipline, Number	

TRO:			
From	To	Type	Remark
End of keep clear zig zags	21m forwards	Clearway + Bus Stop Box	New road markings

This map is based on Ordnance Survey material with the permission of Ordnance Survey on behalf of the Controller of Her Majesty's Stationary Office. © Crown copyright. Unauthorised reproduction infringes Crown copyright and may lead to prosecution or civil proceedings. All rights reserved. Lancashire County Council Licence AC000859590, 2023.

Scale 1:125

Millimetres  
100  
10  
0  
DO NOT SCALE



**SAFETY, HEALTH AND ENVIRONMENTAL INFORMATION**

In addition to the hazards/risks normally associated with the types of work detailed on this drawing, note the following significant residual risks (Reference shall also be made to the design hazard log).

Construction  
C1 - UNDERGROUND UTILITIES

Maintenance / Cleaning  
M1 - UNDERGROUND UTILITIES

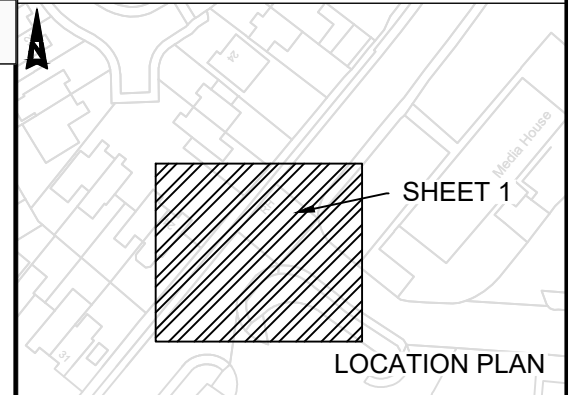
Use  
NONE

Decommissioning / Demolition  
D1 - UNDERGROUND UTILITIES

RM1			
CLEARWAY (DIAG 1025.1)			
TYPE	WIDTH (mm)	COLOUR	AMBER
MARK (mm)	CONTINUOUS	GAP (mm)	NONE
TOTAL LENGTH (m)	17		
DASHED LINE (DIAG 1025.1)			
TYPE	WIDTH (mm)	COLOUR	AMBER
MARK (mm)	1000	GAP (mm)	1000
TOTAL LENGTH (m)	21		
BUS STOP LETTERS (DIAG 1025.1)			
NO. OF LETTERS	7		

- KEY:**
- 400x400 TACTILE PAVING
  - 200x100 TACTILE PAVING
  - BULLNOSE KERB 160 FACE
  - BULLNOSE KERB 160 TO 130 FACE
  - TRANSITION KERB 130 TO 100 FACE
  - BUS STOP MARKINGS
  - HSE HAZARD TRIANGLE FOR MORE INFORMATION REFER TO SHE BOX

- NOTES:**
1. REFER TO LCC STANDARD BUS STOP DETAIL DRAWING FOR DIMENSIONS OF THE TACTILE PAVING, KERB DIMENSIONS (TYPES) AND KERB HEIGHTS
  2. REFER TO DRAWING LCCBSAP2-ATK-HGN-ZZ-DR-CH-000024 FOR THE UTILITIES KEY
  3. MATERIALS USED ON THE LAYOUT DRAWINGS ARE TO MATCH EXISTING MATERIALS ON SITE
  4. NO FEEDER PILLAR PRESENT - POWER TO BE SUPPLIED BY LIGHTING COLUMN IN CLOSE PROXIMITY TO BUS STOP



Description						
Status	Rev	Drawn	Chk'd	Rev'd	Auth	Issue Date
Description						
Status	Rev	Drawn	Chk'd	Rev'd	Auth	Issue Date
Description						
Status	Rev	Drawn	Chk'd	Rev'd	Auth	Issue Date
Description						
FIRST ISSUE						
Status	Rev	Drawn	Chk'd	Rev'd	Auth	Issue Date
A1	C01	KW	HK	HK	JK	24/05/24
Description						
Status	Drawing Suitability					
A1	APPROVED - PUBLISHED					

**AtkinsRéalis**  
 Chadwick House  
 Birchwood Park  
 Warrington  
 WA3 6AE  
 Tel: +44 (0)1925 238000  
 Fax: +44 (0)1925 238500  
 Copyright © AtkinsRéalis (2023) www.AtkinsRealis.com



Project Title  
EAST LANCASHIRE LUF BUS STOP ACCESSIBILITY IMPROVEMENTS

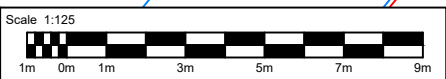
Drawing Title  
BURNLEY ROAD - ALTHAM  
BUS STOP ID: 2500IMG2369  
DETAILED DESIGN

Drawing Number	Project	Originator	Functional Breakdown
	LCCBSAP2	- ATK	- HGN -
		ZZ	- DR - CH - 000016
Spatial Breakdown	Form	Discipline	Number
Original Size: A3	Scale: 1:125	Project Ref. No: 5226062	Sheet: 1 of 1 Rev: C01

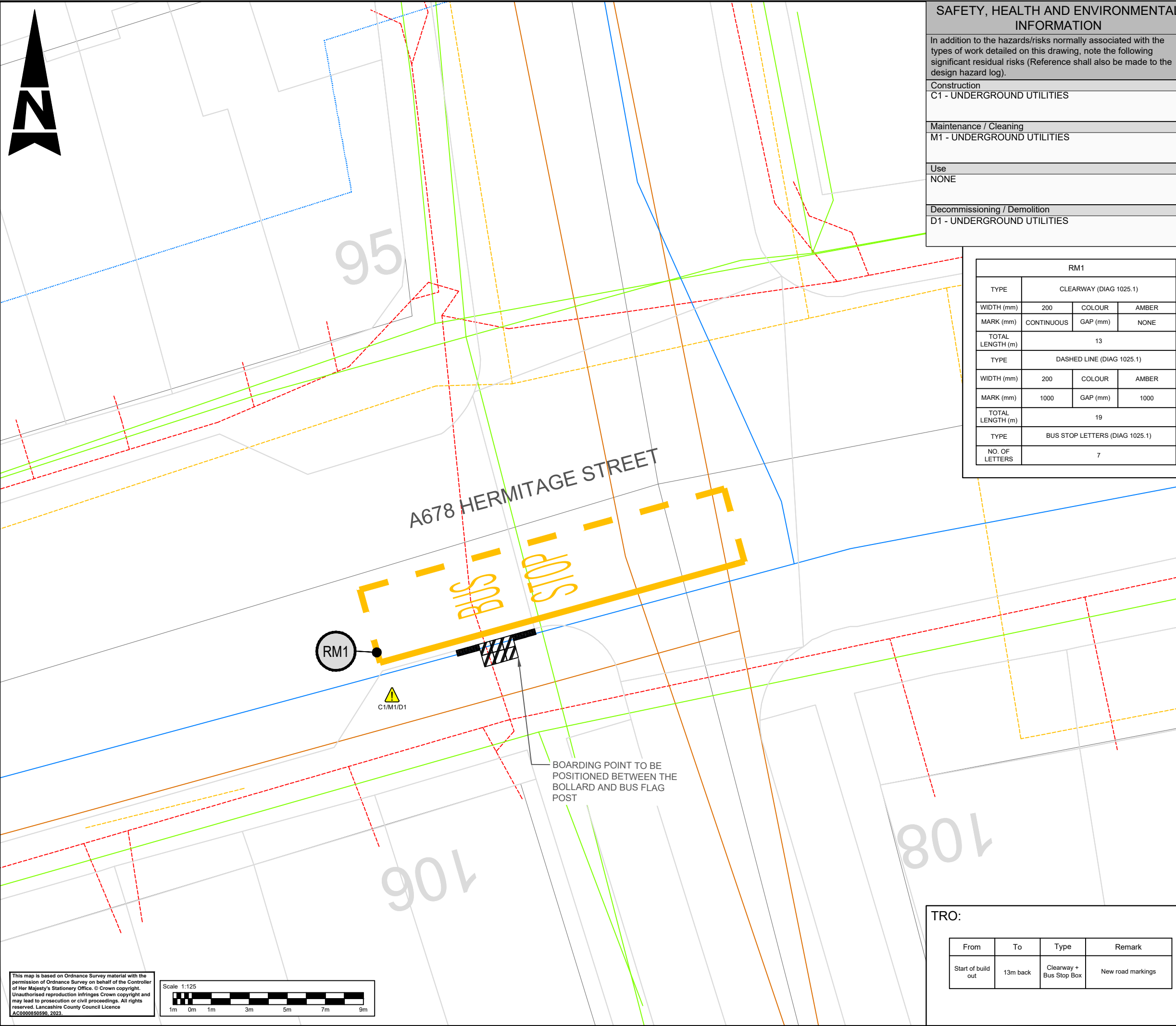
**TRO:**

From	To	Type	Remark
Left side of the FMG Garage entrance	15m back	Clearway + Bus Stop Box	New road markings

This map is based on Ordnance Survey material with the permission of Ordnance Survey on behalf of the Controller of Her Majesty's Stationary Office. © Crown copyright. Unauthorised reproduction infringes Crown copyright and may lead to prosecution or civil proceedings. All rights reserved. Lancashire County Council Licence AC000859590, 2023.



Millimetres  
100  
10  
0  
DO NOT SCALE



**SAFETY, HEALTH AND ENVIRONMENTAL INFORMATION**

In addition to the hazards/risks normally associated with the types of work detailed on this drawing, note the following significant residual risks (Reference shall also be made to the design hazard log).

Construction  
C1 - UNDERGROUND UTILITIES

Maintenance / Cleaning  
M1 - UNDERGROUND UTILITIES

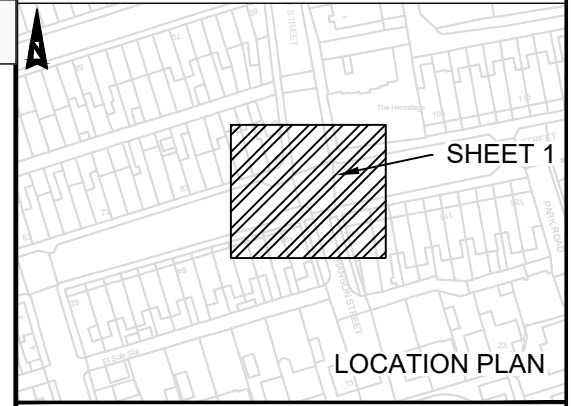
Use  
NONE

Decommissioning / Demolition  
D1 - UNDERGROUND UTILITIES

- KEY:**
- 400x400 TACTILE PAVING
  - 200x100 TACTILE PAVING
  - BUS STOP MARKINGS
  - HSE HAZARD TRIANGLE FOR MORE INFORMATION REFER TO SHE BOX

- NOTES:**
1. REFER TO LCC STANDARD BUS STOP DETAIL DRAWING FOR DIMENSIONS OF THE TACTILE PAVING, KERB DIMENSIONS (TYPES) AND KERB HEIGHTS
  2. REFER TO DRAWING LCCBSAP2-ATK-HGN-ZZ-DR-CH-000024 FOR THE UTILITIES KEY
  3. MATERIALS USED ON THE LAYOUT DRAWINGS ARE TO MATCH EXISTING MATERIALS ON SITE
  4. NO FEEDER PILLAR PRESENT - POWER TO BE SUPPLIED BY LIGHTING COLUMN LEFT OF BUS STOP

RM1			
TYPE	CLEARWAY (DIAG 1025.1)		
	WIDTH (mm)	200	COLOUR
MARK (mm)	CONTINUOUS	GAP (mm)	NONE
TOTAL LENGTH (m)	13		
TYPE	DASHED LINE (DIAG 1025.1)		
	WIDTH (mm)	200	COLOUR
MARK (mm)	1000	GAP (mm)	1000
TOTAL LENGTH (m)	19		
TYPE	BUS STOP LETTERS (DIAG 1025.1)		
	NO. OF LETTERS	7	



Description							
Status	Rev	Drawn	Chk'd	Rev'd	Auth	Issue Date	
Description							
Status	Rev	Drawn	Chk'd	Rev'd	Auth	Issue Date	
Description							
Status	Rev	Drawn	Chk'd	Rev'd	Auth	Issue Date	
Description							
FIRST ISSUE							
Status	Rev	Drawn	Chk'd	Rev'd	Auth	Issue Date	
A1		C01	KW	HK	HK	JK	24/05/24
Description							
Status	Drawing Suitability						
A1	APPROVED - PUBLISHED						

**AtkinsRéalis**  
Chadwick House  
Birchwood Park  
Warrington  
WA3 6AE  
Tel: +44 (0)1925 238000  
Fax: +44 (0)1925 238500  
Copyright © AtkinsRéalis (2023) www.AtkinsRealis.com

Client  
**Lancashire County Council**

Project Title  
EAST LANCASHIRE LUF BUS STOP ACCESSIBILITY IMPROVEMENTS  
Drawing Title  
HERMITAGE STREET - RISHTON  
BUS STOP ID: 250012988  
DETAILED DESIGN

Drawing Number  
Project Originator Functional Breakdown  
LCCBSAP2 - ATK - HGN -  
ZZ - DR - CH - 000018  
Spatial Breakdown Form Discipline Number  
Original A3 Scale: 1:125 Project Ref. No: 5226062 Sheet: 1 of 1 Rev: C01

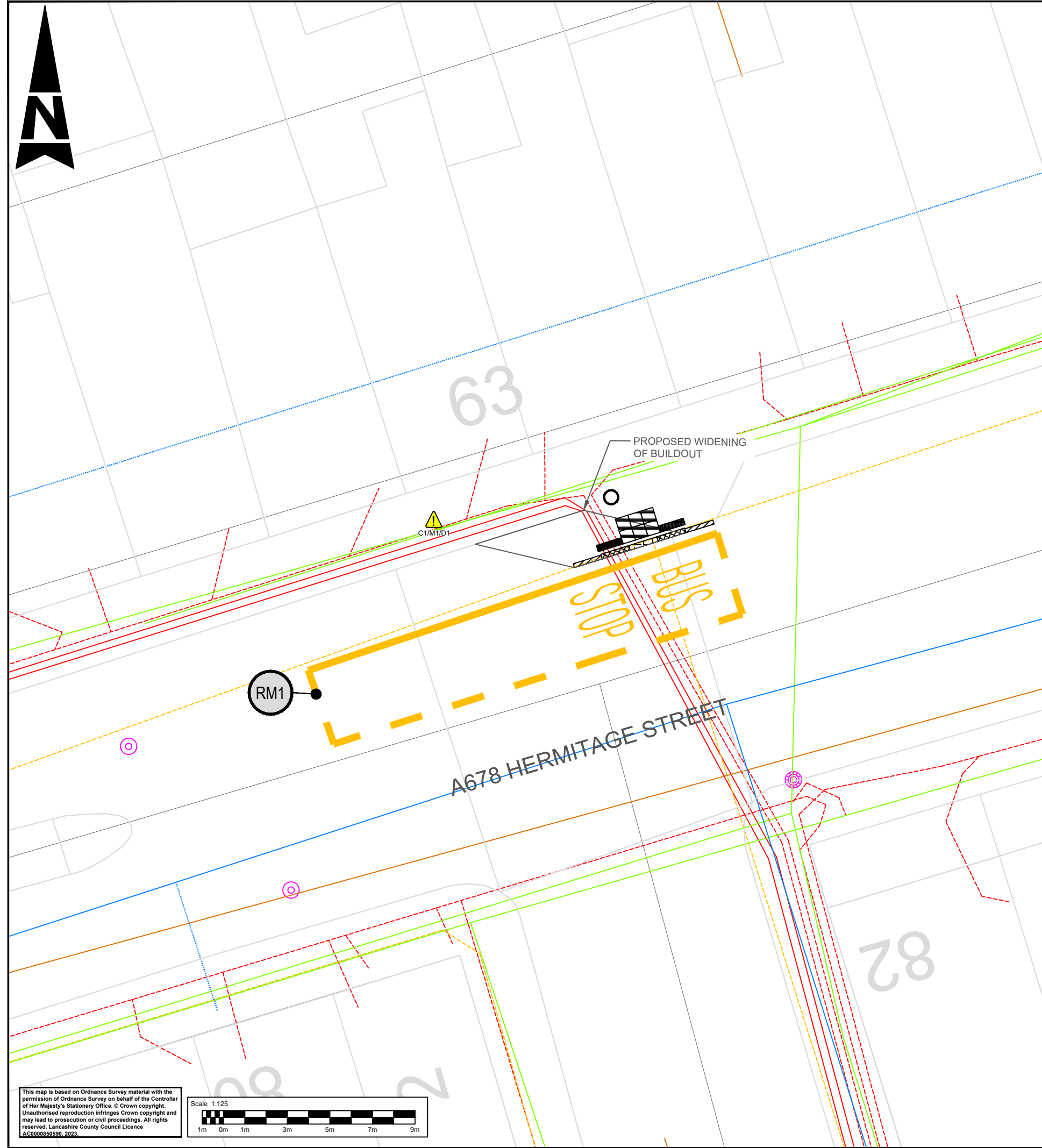
**TRO:**

From	To	Type	Remark
Start of build out	13m back	Clearway + Bus Stop Box	New road markings

This map is based on Ordnance Survey material with the permission of Ordnance Survey on behalf of the Controller of Her Majesty's Stationary Office. © Crown copyright. Unauthorised reproduction infringes Crown copyright and may lead to prosecution or civil proceedings. All rights reserved. Lancashire County Council Licence AC00085959, 2023.  
Scale 1:125  
1m 0m 1m 3m 5m 7m 9m



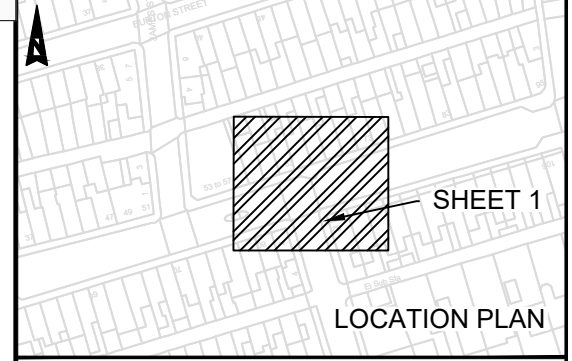
100  
Millimetres  
10  
0  
DO NOT SCALE



SAFETY, HEALTH AND ENVIRONMENTAL INFORMATION	
In addition to the hazards/risks normally associated with the types of work detailed on this drawing, note the following significant residual risks (Reference shall also be made to the design hazard log).	
Construction	C1 - UNDERGROUND UTILITIES
Maintenance / Cleaning	M1 - UNDERGROUND UTILITIES
Use	NONE
Decommissioning / Demolition	D1 - UNDERGROUND UTILITIES

RM1			
TYPE		CLEARWAY (DIAG 1025.1)	
WIDTH (mm)	200	COLOUR	AMBER
MARK (mm)	CONTINUOUS	GAP (mm)	NONE
TOTAL LENGTH (m)	14		
TYPE		DASHED LINE (DIAG 1025.1)	
WIDTH (mm)	200	COLOUR	AMBER
MARK (mm)	1000	GAP (mm)	1000
TOTAL LENGTH (m)	19		
TYPE		BUS STOP LETTERS (DIAG 1025.1)	
NO. OF LETTERS	7		

- KEY:
- BUS STOP FLAG
  - 400x400 TACTILE PAVING
  - 200x100 TACTILE PAVING
  - BULLNOSE KERB 160 FACE
  - BULLNOSE KERB 160 TO 130 FACE
  - TRANSITION KERB 130 TO 100 FACE
  - BUS STOP MARKINGS
  - HSE HAZARD TRIANGLE FOR MORE INFORMATION REFER TO SHE BOX
- NOTES:
- REFER TO LCC STANDARD BUS STOP DETAIL DRAWING FOR DIMENSIONS OF THE TACTILE PAVING, KERB DIMENSIONS (TYPES) AND KERB HEIGHTS
  - REFER TO DRAWING LCCBSAP2-ATK-HGN-ZZ-DR-CH-000024 FOR THE UTILITIES KEY
  - MATERIALS USED ON THE LAYOUT DRAWINGS ARE TO MATCH EXISTING MATERIALS ON SITE
  - NO FEEDER PILLAR PRESENT - POWER TO BE SUPPLIED BY LIGHTING COLUMN LEFT OF BUS STOP BY 55 HERMITAGE STREET



Description						
Status	Rev	Drawn	Chk'd	Rev'd	Auth	Issue Date
Description						
Status	Rev	Drawn	Chk'd	Rev'd	Auth	Issue Date
Description						
Status	Rev	Drawn	Chk'd	Rev'd	Auth	Issue Date
Description						
FIRST ISSUE						
Status	Rev	Drawn	Chk'd	Rev'd	Auth	Issue Date
A1	C01	KW	HK	HK	JK	24/05/24
Description						
Status	Drawing Suitability					
A1	APPROVED - PUBLISHED					

**AtkinsRéalis**  
 Chadwick House  
 Birchwood Park  
 Warrington  
 WA3 6AE  
 Tel: +44 (0)1925 238000  
 Fax: +44 (0)1925 238500  
 Copyright © AtkinsRéalis (2023) www.AtkinsRealis.com



Project Title  
EAST LANCASHIRE LUF BUS STOP ACCESSIBILITY IMPROVEMENTS

Drawing Title  
HERMITAGE STREET - RISHTON  
BUS STOP ID: 2500IMG2087  
DETAILED DESIGN

Drawing Number	Project	Originator	Functional Breakdown
	LCCBSAP2	- ATK	- HGN -
		ZZ	- DR - CH - 000020
Spatial Breakdown	Form	Discipline	Number
Original Size: A3	Scale: 1:125	Project Ref. No: 5226062	Sheet: 1 of 1 Rev: C01

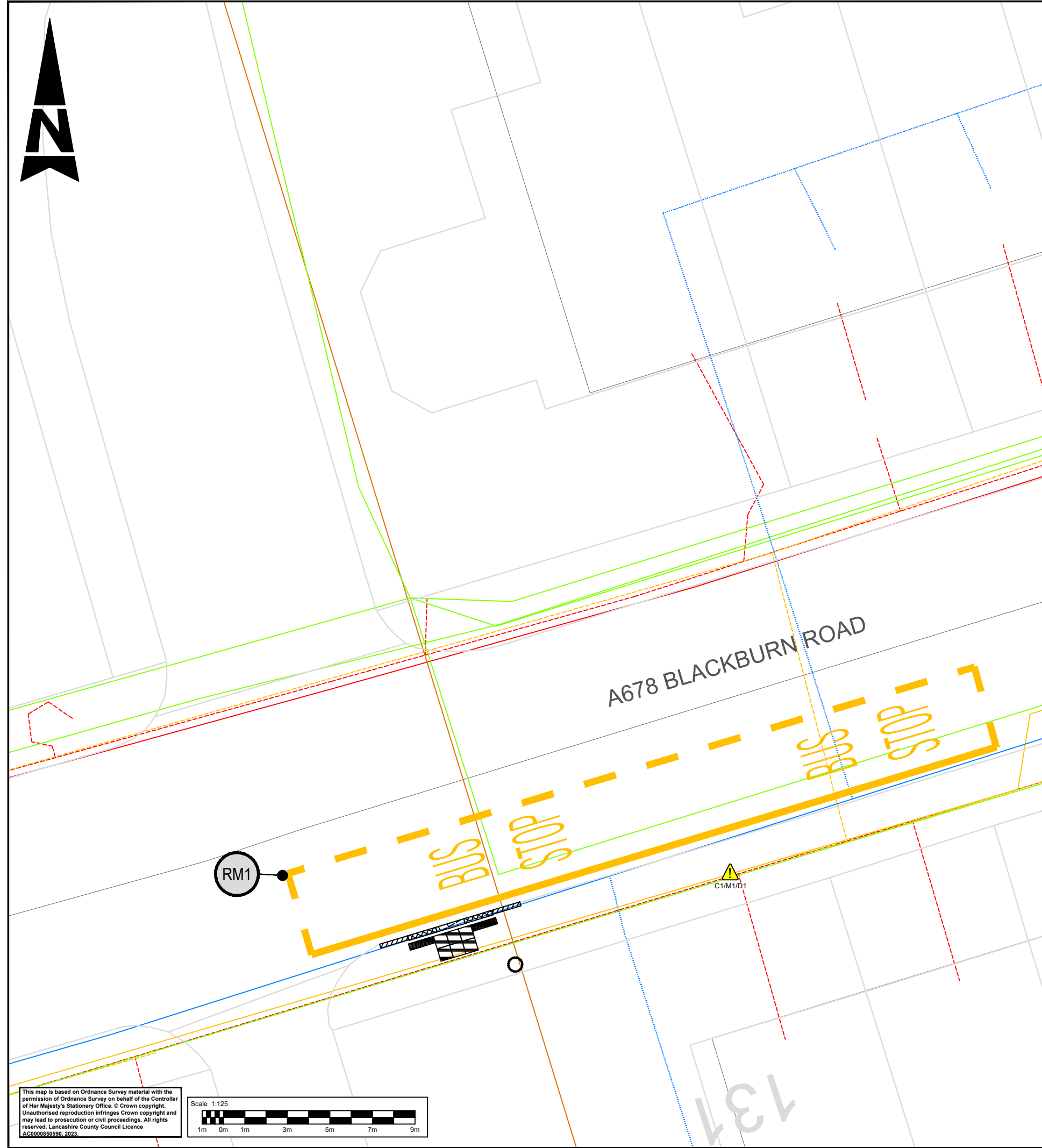
TRO:

From	To	Type	Remark
Start of existing build out	Property boundary between 59 and 61 Hermitage Street	Clearway + Bus Stop Box	New road markings

This map is based on Ordnance Survey material with the permission of Ordnance Survey on behalf of the Controller of Her Majesty's Stationary Office. © Crown copyright. Unauthorised reproduction infringes Crown copyright and may lead to prosecution or civil proceedings. All rights reserved. Lancashire County Council Licence AC00085959, 2023.

Scale 1:125

100  
Millimetres  
10  
0  
DO NOT SCALE



**SAFETY, HEALTH AND ENVIRONMENTAL INFORMATION**

In addition to the hazards/risks normally associated with the types of work detailed on this drawing, note the following significant residual risks (Reference shall also be made to the design hazard log).

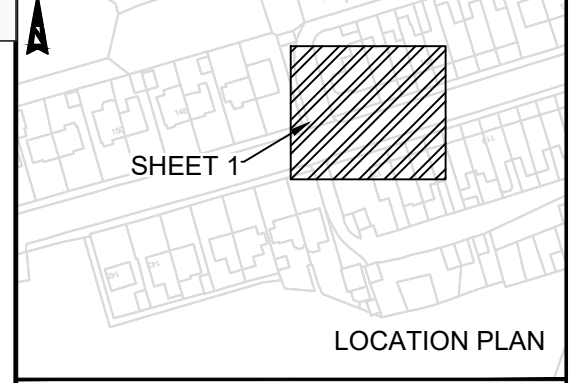
Construction	C1 - UNDERGROUND UTILITIES
Maintenance / Cleaning	M1 - UNDERGROUND UTILITIES
Use	NONE
Decommissioning / Demolition	D1 - UNDERGROUND UTILITIES

RM1			
TYPE		CLEARWAY (DIAG 1025.1)	
WIDTH (mm)	200	COLOUR	AMBER
MARK (mm)	CONTINUOUS	GAP (mm)	NONE
TOTAL LENGTH (m)	23		
TYPE		DASHED LINE (DIAG 1025.1)	
WIDTH (mm)	200	COLOUR	AMBER
MARK (mm)	1000	GAP (mm)	1000
TOTAL LENGTH (m)	27		
TYPE		BUS STOP LETTERS (DIAG 1025.1)	
NO. OF LETTERS	14		

**KEY:**

- BUS STOP FLAG
- 400x400 TACTILE PAVING
- 200x100 TACTILE PAVING
- BULLNOSE KERB 160 FACE
- BULLNOSE KERB 160 TO 130 FACE
- TRANSITION KERB 130 TO 100 FACE
- BUS STOP MARKINGS
- HSE HAZARD TRIANGLE FOR MORE INFORMATION REFER TO SHE BOX

- NOTES:**
- REFER TO LCC STANDARD BUS STOP DETAIL DRAWING FOR DIMENSIONS OF THE TACTILE PAVING, KERB DIMENSIONS (TYPES) AND KERB HEIGHTS
  - REFER TO DRAWING LCCBSAP2-ATK-HGN-ZZ-DR-CH-000024 FOR THE UTILITIES KEY
  - MATERIALS USED ON THE LAYOUT DRAWINGS ARE TO MATCH EXISTING MATERIALS ON SITE
  - NO FEEDER PILLAR PRESENT - POWER TO BE SUPPLIED BY LIGHTING COLUMN LEFT OF BUS STOP (APPROX. 35M AWAY)



Description						
Status	Rev	Drawn	Chk'd	Rev'd	Auth	Issue Date
Description						
Status	Rev	Drawn	Chk'd	Rev'd	Auth	Issue Date
Description						
Status	Rev	Drawn	Chk'd	Rev'd	Auth	Issue Date
Description						
FIRST ISSUE						
Status	Rev	Drawn	Chk'd	Rev'd	Auth	Issue Date
A1	C01	KW	HK	HK	JK	24/05/24
Description						
Status	Drawing Suitability					
A1	APPROVED - PUBLISHED					

**AtkinsRéalis**

Chadwick House  
Birchwood Park  
Warrington  
WA3 6AE

Tel: +44 (0)1925 238000  
Fax: +44 (0)1925 238500

Copyright © AtkinsRéalis (2023) www.AtkinsRealis.com

**Lancashire County Council**

**Project Title**  
EAST LANCASHIRE LUF BUS STOP ACCESSIBILITY IMPROVEMENTS

**Drawing Title**  
BURNLEY ROAD - CLAYTON LE MOORS  
BUS STOP ID: 2500IMG2302  
DETAILED DESIGN

<b>Drawing Number</b>	Project	Originator	Functional Breakdown
	LCCBSAP2	- ATK	- HGN -
		ZZ	- DR - CH - 000023
<b>Spatial Breakdown</b>	Form	Discipline	Number
Original	A3	Scale:	Project Ref. No:
Size:	1:125	5226062	Sheet: 1 of 1
			Rev: C01

**TRO:**

From	To	Type	Remark
Side road access junction	1m left of Property boundary of 127 / 129 Blackburn Road	Clearway + Bus Stop Box	New road markings

This map is based on Ordnance Survey material with the permission of Ordnance Survey on behalf of the Controller of Her Majesty's Stationary Office. © Crown copyright. Unauthorised reproduction infringes Crown copyright and may lead to prosecution or civil proceedings. All rights reserved. Lancashire County Council Licence AC000859590, 2023.

Scale 1:125

100  
Millimetres

10  
0

DO NOT SCALE

UTILITIES KEY:

- LCC, ELECTRIC STREET LIGHT
- LCC, ELECTRIC STREET FURNITURE
- LCC, GULLY
- GTC, SERVICE, PROPOSED (E)
- GTC, SERVICE (E)
- GTC, LOW VOLTAGE
- NORTHERN POWERGRID, LOW VOLTAGE
- NORTHERN POWERGRID, LOW VOLTAGE SERVICE
- NORTHERN POWERGRID, LOW VOLTAGE LOGICAL CONNECTION
- NORTHERN POWERGRID, LOW VOLTAGE SERVICE ASSUMED ROUTE
- NORTHERN POWERGRID, LEFT IN SITU
- NORTHERN POWERGRID, HIGH VOLTAGE, 11kV
- NORTHERN POWERGRID, DUCT
- NORTHERN POWERGRID SUBSTATION
- ENERGY ASSET NETWORKS, LOW VOLTAGE
- ENERGY ASSET NETWORKS, EARTH
- LAST MILE, LOW VOLTAGE
- ELECTRICITY NORTH WEST, LOW VOLTAGE
- ELECTRICITY NORTH WEST, LOW VOLTAGE, ABANDONED
- ELECTRICITY NORTH WEST, HIGH VOLTAGE, 6kV
- ELECTRICITY NORTH WEST, HIGH VOLTAGE, 6kV, ABANDONED
- ELECTRICITY NORTH WEST, HIGH VOLTAGE, 6.6kV
- ELECTRICITY NORTH WEST, HIGH VOLTAGE, 6.6kV, OVERHEAD
- ELECTRICITY NORTH WEST, HIGH VOLTAGE, 6.6kV, ABANDONED
- ELECTRICITY NORTH WEST, HIGH VOLTAGE, 33kV
- ELECTRICITY NORTH WEST, HIGH VOLTAGE, 33kV, ABANDONED
- ELECTRICITY NORTH WEST, HIGH VOLTAGE, 11kV
- ELECTRICITY NORTH WEST, HIGH VOLTAGE, 11kV, ABANDONED
- ELECTRICITY NORTH WEST, HIGH VOLTAGE, 11kV, OVERHEAD
- ELECTRICITY NORTH WEST, HIGH VOLTAGE, 132kV OVERHEAD
- ELECTRICITY NORTH WEST, EXTRA HIGH VOLTAGE, 132kV
- ELECTRICITY NORTH WEST, EARTH
- ESP UTILITIES GROUP, LOW VOLTAGE
- ELECTRICITY NORTH WEST, SUBSTATION
- LAST MILE, LOW PRESSURE
- ESP UTILITIES GROUP, LOW PRESSURE
- GTC, SERVICE, PROPOSED (G)
- GTC, SERVICE (G)
- GTC, LOW PRESSURE, PROPOSED
- GTC, LOW PRESSURE
- ENERGY ASSETS, SERVICE
- CADENT GAS, LOW PRESSURE
- CADENT GAS, MEDIUM PRESSURE
- CADENT GAS, LOCAL-HIGH PRESSURE
- HIGHWAYS ENGLAND - NORTH WEST (FORMER 10 & 13), NOT SPECIFIED
- NETWORK RAIL, DC ASSET LINE
- NETWORK RAIL, DB ASSET LINE
- UNITED UTILITIES, GULLY, SURFACE WATER SEWER
- UNITED UTILITIES, GULLY, FOUL SEWER
- UNITED UTILITIES, GULLY, COMBINED SEWER
- UNITED UTILITIES, SURFACE WATER
- UNITED UTILITIES, SURFACE WATER PRIVATE
- UNITED UTILITIES, OVERFLOW
- UNITED UTILITIES, ABANDONED
- UNITED UTILITIES, ABANDONED (S)
- UNITED UTILITIES, FOUL SEWER
- UNITED UTILITIES, COMBINED SEWER
- UNITED UTILITIES, COMBINED SEWER PRIVATE
- YORKSHIRE WATER, SURFACE WATER SEWER
- YORKSHIRE WATER, FOUL SEWER
- YORKSHIRE WATER, COMBINED SEWER
- ZAYO GROUP UK LTD CO JSM GROUP LTD, NOT SPECIFIED
- VODAFONE, OWNED
- VIRGIN MEDIA, NOT SPECIFIED
- OPENREACH - [BRITISH TELECOMMUNICATIONS], PROPOSED
- OPENREACH - [BRITISH TELECOMMUNICATIONS], PROPOSED, OVERHEAD
- OPENREACH - [BRITISH TELECOMMUNICATIONS], NOT SPECIFIED
- OPENREACH - [BRITISH TELECOMMUNICATIONS], OVERHEAD
- OPENREACH - [BRITISH TELECOMMUNICATIONS], DUCT
- NEOS NETWORK, NOT SPECIFIED
- UNITED UTILITIES, TRUNK MAIN, PROPOSED
- UNITED UTILITIES, TRUNK MAIN
- UNITED UTILITIES, RAW WATER
- UNITED UTILITIES, PRIVATE PIPE, PROPOSED
- UNITED UTILITIES, PRIVATE PIPE
- UNITED UTILITIES, ABANDONED (W)
- UNITED UTILITIES, DISTRIBUTION MAIN, PROPOSED
- UNITED UTILITIES, DISTRIBUTION MAIN
- UNITED UTILITIES, DISTRIBUTION MAIN, ABANDONED
- UNITED UTILITIES, COMMS PIPE, PROPOSED
- UNITED UTILITIES, COMMS PIPE
- UNITED UTILITIES, COMMS PIPE, ABANDONED
- YORKSHIRE WATER, WATER MAIN
- YORKSHIRE WATER, WATER MAIN, ABANDONED
- YORKSHIRE WATER, WATER MAIN PRIVATE

Description

Status	Rev	Drawn	Chk'd	Rev'd	Auth	Issue Date

Description

Status	Rev	Drawn	Chk'd	Rev'd	Auth	Issue Date

Description


Status	Rev	Drawn	Chk'd	Rev'd	Auth	Issue Date

Description  
FIRST ISSUE

Status	Rev	Drawn	Chk'd	Rev'd	Auth	Issue Date	
A1		C01	KW	HK	JK	JK	14/02/24

Status  
A1

Drawing Suitability  
APPROVED - PUBLISHED



Chadwick House  
Birchwood Park  
Warrington  
WA3 6AE

Tel: +44 (0)1925 238000  
Fax: +44 (0)1925 238500

Copyright © AtkinsRéalis (2023) www.AtkinsRealis.com

Client



Project Title  
EAST LANCASHIRE LUF BUS STOP  
ACCESSIBILITY IMPROVEMENTS

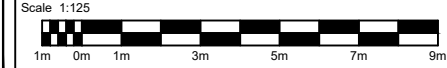
Drawing Title  
UTILITIES KEY

Drawing Number	Project	Originator	Functional Breakdown
	LCCBSA	- ATK	- HGN -
		ZZ	- DR - CH - 000045
Spatial Breakdown	Form	Discipline	Number

Original Size:	A3	Scale:	1:125	Project Ref. No:	5226062	Sheet:	1 of 1	Rev:	C01
----------------	----	--------	-------	------------------	---------	--------	--------	------	-----

This map is based on Ordnance Survey material with the permission of Ordnance Survey on behalf of the Controller of Her Majesty's Stationery Office. © Crown copyright. Unauthorised reproduction infringes Crown copyright and may lead to prosecution or civil proceedings. All rights reserved. Lancashire County Council Licence AC000850590, 2023.

Scale 1:125





100  
Millimetres

10

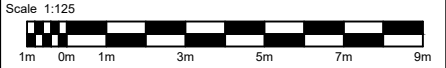
0

DO NOT SCALE

UTILITIES KEY:

- LCC, ELECTRIC STREET LIGHT
- LCC, ELECTRIC STREET FURNITURE
- ELECTRICITY NORTH WEST
- ELECTRICITY NORTH WEST, EARTH
- ELECTRICITY NORTH WEST, HIGH VOLTAGE, 6.6kV
- ELECTRICITY NORTH WEST, HIGH VOLTAGE, 6.6kV, ABANDONED
- ELECTRICITY NORTH WEST, HIGH VOLTAGE, 6.6kV, OVERHEAD
- ELECTRICITY NORTH WEST, HIGH VOLTAGE, 11kV
- ELECTRICITY NORTH WEST, HIGH VOLTAGE, 11kV, ABANDONED
- ELECTRICITY NORTH WEST, HIGH VOLTAGE, 33kV
- ELECTRICITY NORTH WEST, HIGH VOLTAGE, 33kV, ABANDONED
- ELECTRICITY NORTH WEST, LOW VOLTAGE
- ELECTRICITY NORTH WEST, LOW VOLTAGE, ABANDONED
- ELECTRICITY NORTH WEST, SUBSTATION
- LAST MILE, LOW VOLTAGE
- NORTHERN POWERGRID, DUCT
- NORTHERN POWERGRID, HIGH VOLTAGE, 11kV
- NORTHERN POWERGRID, HIGH VOLTAGE, 11kV, OVERHEAD
- NORTHERN POWERGRID, HIGH VOLTAGE, 33kV, OVERHEAD
- NORTHERN POWERGRID, LEFT IN SITU
- NORTHERN POWERGRID, LOW VOLTAGE
- NORTHERN POWERGRID, LOW VOLTAGE SERVICE
- NORTHERN POWERGRID, LOW VOLTAGE SERVICE ASSUMED ROUTE
- NORTHERN POWERGRID, LOW VOLTAGE LOGICAL CONNECTION
- NORTHERN POWERGRID, LOW VOLTAGE OVERHEAD
- NORTHERN POWERGRID SUBSTATION
- CADENT GAS, LOCAL-HIGH PRESSURE
- CADENT GAS, LOW PRESSURE
- CADENT GAS, MEDIUM PRESSURE
- ESP UTILITIES GROUP, LOW PRESSURE
- GTC, LOW PRESSURE
- GTC, SERVICE
- UNITED UTILITIES, ABANDONED
- UNITED UTILITIES, COMBINED SEWER
- UNITED UTILITIES, COMBINED SEWER PRIVATE
- UNITED UTILITIES, FOUL SEWER
- UNITED UTILITIES, FOUL SEWER PRIVATE
- UNITED UTILITIES, GULLY, COMBINED SEWER
- UNITED UTILITIES, GULLY, FOUL SEWER
- UNITED UTILITIES, GULLY, SURFACE WATER SEWER
- UNITED UTILITIES, OVERFLOW
- UNITED UTILITIES, SURFACE WATER
- UNITED UTILITIES, SURFACE WATER PRIVATE
- YORKSHIRE WATER, COMBINED SEWER
- YORKSHIRE WATER, FOUL SEWER
- YORKSHIRE WATER, SURFACE WATER SEWER
- OCU GROUP LUMEN, DUCT
- OPENREACH - [BRITISH TELECOMMUNICATIONS]
- OPENREACH - [BRITISH TELECOMMUNICATIONS], PROPOSED
- OPENREACH - [BRITISH TELECOMMUNICATIONS], OVERHEAD
- OPENREACH - [BRITISH TELECOMMUNICATIONS], PROPOSED, OVERHEAD
- OPENREACH - [BRITISH TELECOMMUNICATIONS], DUCT
- VIRGIN MEDIA
- VODAFONE, OWNED
- ZAYO GROUP UK LTD CO JSM GROUP LTD, DUCT
- UNITED UTILITIES, COMMS PIPE
- UNITED UTILITIES, COMMS PIPE, ABANDONED
- UNITED UTILITIES, COMMS PIPE, PROPOSED
- UNITED UTILITIES, CONCESSIONARY SERVICE
- UNITED UTILITIES, DISTRIBUTION MAIN
- UNITED UTILITIES, DISTRIBUTION MAIN, ABANDONED
- UNITED UTILITIES, DISTRIBUTION MAIN, PROPOSED
- UNITED UTILITIES, EMPTYING PIPE
- UNITED UTILITIES, LDTM TREATED WATER
- UNITED UTILITIES, PRIVATE PIPE
- UNITED UTILITIES, PRIVATE PIPE, ABANDONED
- UNITED UTILITIES, PRIVATE PIPE, PROPOSED
- UNITED UTILITIES, TRUNK MAIN
- YORKSHIRE WATER, WATER MAIN PRIVATE
- YORKSHIRE WATER, WATER MAIN PRIVATE, ABANDONED
- YORKSHIRE WATER, WATER MAIN
- YORKSHIRE WATER, WATER MAIN, ABANDONED

This map is based on Ordnance Survey material with the permission of Ordnance Survey on behalf of the Controller of Her Majesty's Stationery Office. © Crown copyright. Unauthorised reproduction infringes Crown copyright and may lead to prosecution or civil proceedings. All rights reserved. Lancashire County Council Licence AC000859590, 2023.



Description

Status	Rev	Drawn	Chk'd	Rev'd	Auth	Issue Date

Description

Status	Rev	Drawn	Chk'd	Rev'd	Auth	Issue Date

Description

Status	Rev	Drawn	Chk'd	Rev'd	Auth	Issue Date

Description  
FIRST ISSUE

Status	Rev	Drawn	Chk'd	Rev'd	Auth	Issue Date	
A1		C01	KW	HK	HK	JK	24/05/24

Status  
A1

Drawing Suitability  
APPROVED - PUBLISHED

Chadwick House  
Birchwood Park  
Warrington  
WA3 6AE

Tel: +44 (0)1925 238000  
Fax: +44 (0)1925 238500

Copyright © AtkinsRéalis (2023) www.AtkinsRealis.com

Client



Project Title  
EAST LANCASHIRE LUF BUS STOP ACCESSIBILITY IMPROVEMENTS

Drawing Title  
UTILITIES KEY

Drawing Number	Project	Originator	Functional Breakdown
	LCCBSAP2	- ATK	- HGN -
		ZZ	- DR - CH - 000024
Spatial Breakdown	Form	Discipline	Number

Original Size:	A3	Scale:	1:125	Project Ref. No.:	5226062	Sheet:	1 of 1	Rev.:	C01
----------------	----	--------	-------	-------------------	---------	--------	--------	-------	-----