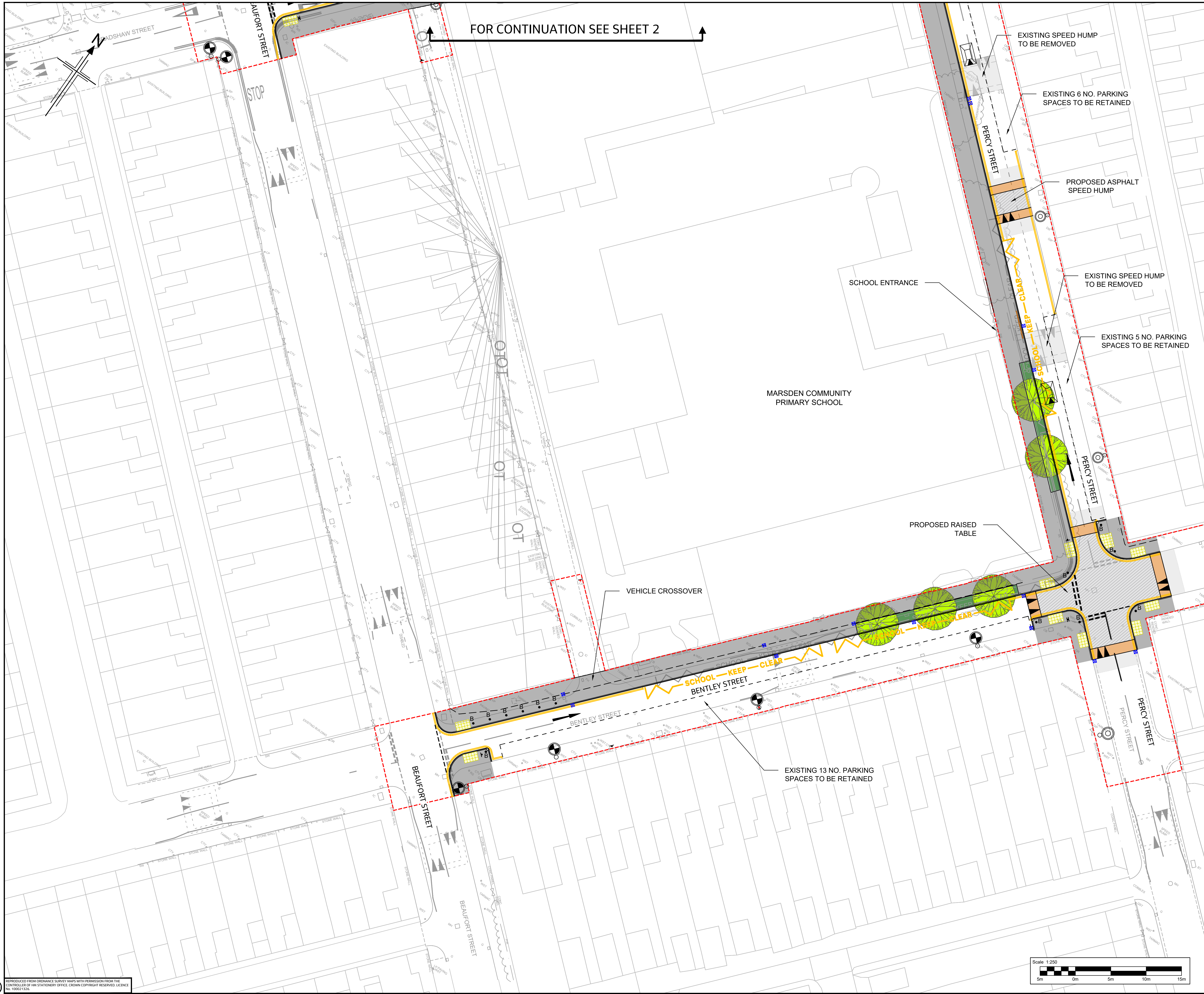


C:\pwworking\jacobs-emea-01\0410587\B2427722-JAC-HGN-PE\_02-DR-CH-0001.dwg - 18/12/2024 12:46:24 - SHEET 01 - Gandhik

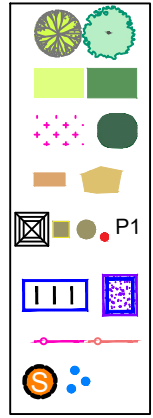


FOR CONTINUATION SEE SHEET 2

- NOTES:
1. All dimensions in metres unless stated otherwise.
  2. Drawings to be printed in colour to enable correct viewing of symbols.
  3. Do not scale from this drawing.
  4. This drawing is to be read in conjunction with the associated contract series drawings, documents, and appendices.
  5. The Contractor shall verify the presence and location of all services before undertaking any work in any area of the site by carrying out a full non-intrusive survey of the entire site before commencing the works.

KEY:

- Proposed kerb
- Proposed edging
- Proposed drainage channel, refer to series 500 and 1100 drawings for details
- Proposed scheme boundary
- Proposed tactile paving in red colour (blister)
- Proposed tactile paving in buff colour (blister)
- Proposed footway
- Proposed raised table ramp
- Proposed raised table
- Proposed carriageway resurfacing
- Proposed green area
- Proposed pedestrian guardrail in Optitrail type V4, colour in blue, or similar approved
- Proposed road markings
- Proposed sign and post
- Proposed asphalt concrete speed cushion



- Proposed bollards in Optitrail type V4, colour in blue, or similar approved
- Proposed earthworks tadpoles
- Proposed street lighting, refer to series 1300 drawings for details
- Proposed gully, refer to series 500 drawings for details
- Proposed Traffic signal, refer to series 1200 drawings for details



Rev	Rev. Date	Purpose of revision	Drawn	Checked	Rev'd	Appr'd
P01	02/09/24	SUITABLE FOR RSA 2 AUDIT	SS	GS	ML	AP
P02	04/10/24	Suitable For Review & Comment	AK	GS	GS	PB
P03	17/12/24	SUITABLE FOR TENDER	SS	MG	GS	AP

**Jacobs**  
7th Floor, 2 Colmore Square, 38 Colmore Circus  
Queen'sway, Birmingham, B4 6BN  
Tel: +44(0)121 237 4000 www.jacobs.com

Client  
**Lancashire County Council**

Project  
LUF Detailed Design

Drawing title  
**NELSON AREA  
GENERAL ARRANGEMENT  
SHEET 1 OF 8**

Drawing status  
**D2 - SUITABLE FOR TENDER**

Scale	1:250	DO NOT SCALE
Jacobs No.	B2427722	
Client no.	B2427722	

Drawing number  
**B2427722-JAC-HGN-PE\_02-DR-CH-0001**

Rev  
**P03**

© Copyright 2024 Jacobs U.K. Limited. The concepts and information contained in this document are the property of Jacobs. Use or copying of this document in whole or in part without the written permission of Jacobs constitutes an infringement of copyright. Limitation: This drawing has been prepared on behalf of, and for the exclusive use of Jacobs Client, and is subject to, and issued in accordance with, the provisions of the contract between Jacobs and the Client. Jacobs accepts no liability or responsibility whatsoever for or in respect of, any use of, or reliance upon, this drawing by any third party.



C:\pwworking\jacobs-emea-01\0410587\B2427722-JAC-HGN-PE\_02-DR-CH-0002.dwg - 18/12/2024 12:47:00 - SHEET 02 - Gandhik



**NOTES:**

1. All dimensions in metres unless stated otherwise.
2. Drawings to be printed in colour to enable correct viewing of symbols.
3. Do not scale from this drawing.
4. This drawing is to be read in conjunction with the associated contract series drawings, documents, and appendices.
5. The Contractor shall verify the presence and location of all services before undertaking any work in any area of the site by carrying out a full non-intrusive survey of the entire site before commencing the works.

**KEY:**

- Proposed kerb
- Proposed edging
- Proposed drainage channel, refer to series 500 and 1100 drawings for details
- Proposed scheme boundary
- Proposed tactile paving in red colour (blister)
- Proposed tactile paving in buff colour (blister)
- Proposed footway
- Proposed raised table ramp
- Proposed raised table
- Proposed carriageway resurfacing
- Proposed green area
- Proposed pedestrian guardrail in Optitrail type V4, colour in blue, or similar approved
- Proposed road markings
- Proposed sign and post
- Proposed asphalt concrete speed cushion

Proposed landscape features, refer to series 3000 drawings for details

- Proposed bollards in Optitrail type V4, colour in blue, or similar approved
- Proposed earthworks tadpoles
- Proposed street lighting, refer to series 1300 drawings for details
- Proposed gully, refer to series 500 drawings for details
- Proposed Traffic signal, refer to series 1200 drawings for details

**LOCATION PLAN**

P01	02/09/24	SUITABLE FOR RSA 2 AUDIT	SS	GS	ML	AP
P02	04/10/24	Suitable For Review & Comment	AK	GS	GS	PB
P03	17/12/24	SUITABLE FOR TENDER	SS	MG	GS	AP
Rev	Rev. Date	Purpose of revision	Drawn	Checkd	Rev'd	Apprv'd

**Jacobs**

7th Floor, 2 Colmore Square, 38 Colmore Circus  
Queen'sway, Birmingham, B4 6BN  
Tel: +44(0)121 237 4000 www.jacobs.com

**Lancashire County Council**

**Client**

LUF Detailed Design

**Drawing title**

NELSON AREA  
GENERAL ARRANGEMENT  
SHEET 2 OF 8

**Drawing status**

D2 - SUITABLE FOR TENDER

Scale	1:250	DO NOT SCALE
Jacobs No.	B2427722	
Client no.	B2427722	
Drawing number	B2427722-JAC-HGN-PE_02-DR-CH-0002	Rev P03

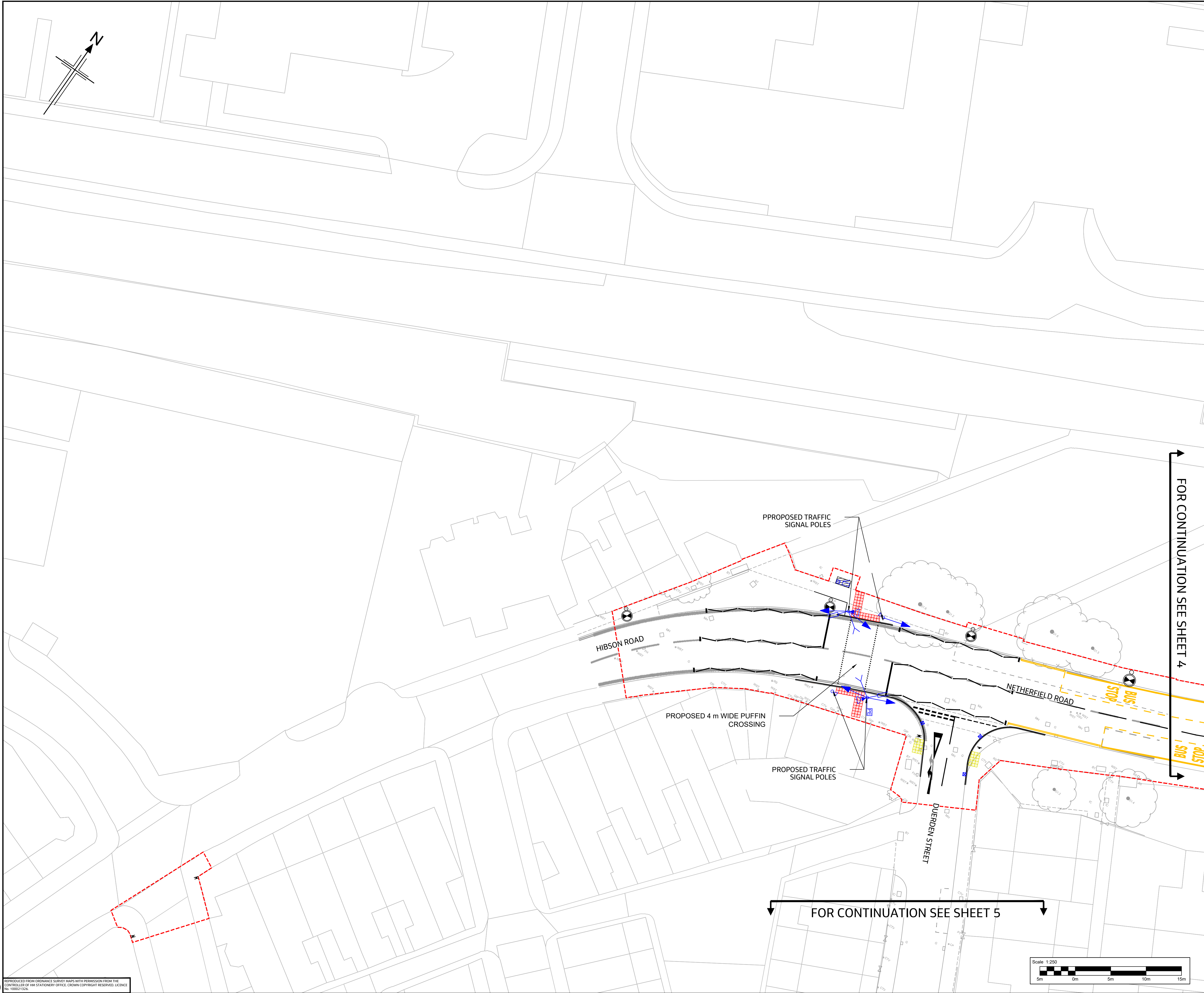
© Copyright 2024 Jacobs U.K. Limited. The concepts and information contained in this document are the property of Jacobs. Use or copying of this document in whole or in part without the written permission of Jacobs constitutes an infringement of copyright. Limitation: This drawing has been prepared on behalf of, and for the exclusive use of, Jacobs Client, and is subject to, and issued in accordance with, the provisions of the contract between Jacobs and the Client. Jacobs accepts no liability or responsibility whatsoever for or in respect of, any use of, or reliance upon, this drawing by any third party.

FOR CONTINUATION SEE SHEET 1

FOR CONTINUATION SEE SHEET 5



C:\pwworking\jacobs-emea-01\0410587\B2427722-JAC-HGN-PE\_02-DR-CH-0003.dwg - 18/12/2024 12:47:35 - SHEET 03 - Gandhik



LOCATION PLAN						
P01	02/09/24	SUITABLE FOR RSA 2 AUDIT	SS	GS	ML	AP
P02	04/10/24	Suitable For Review & Comment	AK	GS	GS	PB
P03	17/12/24	SUITABLE FOR TENDER	SS	MG	GS	AP
Rev	Rev. Date	Purpose of revision	Drawn	Checkd	Rev'd	Apprv'd

**Jacobs**  
7th Floor, 2 Colmore Square, 38 Colmore Circus  
Queensway, Birmingham, B4 6BN  
Tel: +44(0)121 237 4000 www.jacobs.com

Client  
**Lancashire**  
County Council

Project  
LUF Detailed Design

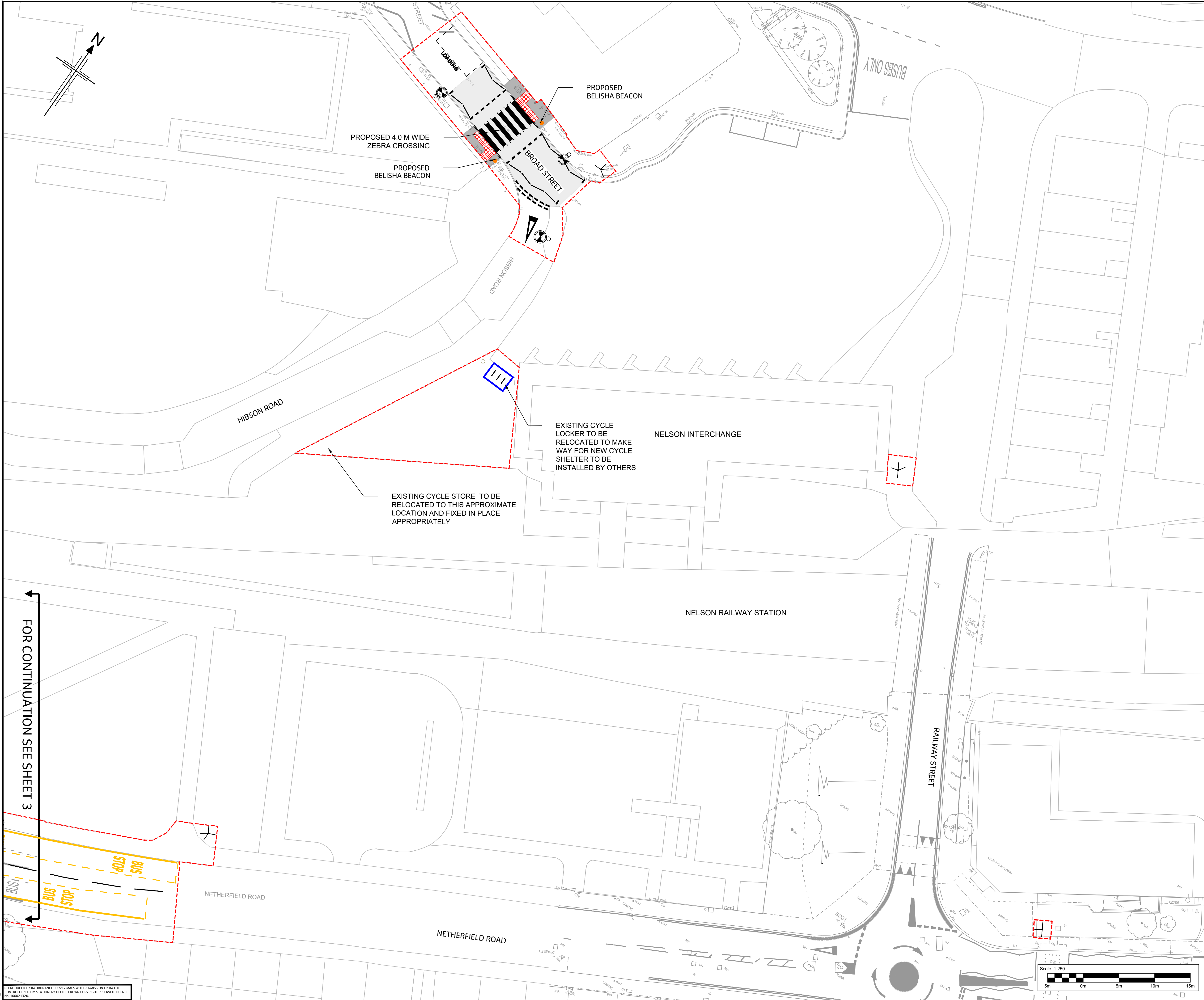
Drawing title  
**NELSON AREA  
GENERAL ARRANGEMENT  
SHEET 3 OF 8**

Drawing status		D2 - SUITABLE FOR TENDER	
Scale	1:250	DO NOT SCALE	
Jacobs No.	B2427722		
Client no.	B2427722		
Drawing number	B2427722-JAC-HGN-PE_02-DR-CH-0003	Rev	P03

© Copyright 2024 Jacobs U.K. Limited. The concepts and information contained in this document are the property of Jacobs. Use or copying of this document in whole or in part without the written permission of Jacobs constitutes an infringement of copyright. Limitation: This drawing has been prepared on behalf of, and for the exclusive use of, Jacobs Client, and is subject to, and issued in accordance with, the provisions of the contract between Jacobs and the Client. Jacobs accepts no liability or responsibility whatsoever for, or in respect of, any use of, or reliance upon, this drawing by any third party.



C:\pwworking\jacobs-emea-01\0410587\B2427722-JAC-HGN-PE\_02-DR-CH-0004.dwg - 18/12/2024 12:48:06 - SHEET 04 - Gandhik



**NOTES:**

1. All dimensions in metres unless stated otherwise.
2. Drawings to be printed in colour to enable correct viewing of symbols.
3. Do not scale from this drawing.
4. This drawing is to be read in conjunction with the associated contract series drawings, documents, and appendices.
5. The Contractor shall verify the presence and location of all services before undertaking any work in any area of the site by carrying out a full non-intrusive survey of the entire site before commencing the works.

**KEY:**

- Proposed kerb
- Proposed edging
- Proposed drainage channel, refer to series 500 and 1100 drawings for details
- Proposed scheme boundary
- Proposed tactile paving in red colour (blister)
- Proposed tactile paving in buff colour (blister)
- Proposed footway
- Proposed raised table ramp
- Proposed raised table
- Proposed carriageway resurfacing
- Proposed green area
- Proposed pedestrian guardrail in Optitrail type V4, colour in blue, or similar approved
- Proposed road markings
- Proposed sign and post
- Proposed asphalt concrete speed cushion

Proposed landscape features, refer to series 3000 drawings for details

- Proposed bollards in Optitrail type V4, colour in blue, or similar approved
- Proposed earthworks tadpoles
- Proposed street lighting, refer to series 1300 drawings for details
- Proposed gully, refer to series 500 drawings for details
- Proposed Traffic signal, refer to series 1200 drawings for details

**LOCATION PLAN**

P01	02/09/24	SUITABLE FOR RSA 2 AUDIT	SS	GS	ML	AP
P02	04/10/24	Suitable For Review & Comment	AK	GS	GS	PB
P03	17/12/24	SUITABLE FOR TENDER	SS	MG	GS	AP
Rev	Rev. Date	Purpose of revision	Drawn	Checked	Rev'd	Apprv'd

**Jacobs**  
7th Floor, 2 Colmore Square, 38 Colmore Circus  
Queensway, Birmingham, B4 6BN  
Tel: +44(0)121 237 4000 www.jacobs.com

Client

**Lancashire County Council**

Project

LUF Detailed Design

Drawing title

**NELSON AREA  
GENERAL ARRANGEMENT  
SHEET 4 OF 8**

Drawing status

**D2 - SUITABLE FOR TENDER**

Scale	1:250	DO NOT SCALE
Jacobs No.	B2427722	
Client no.	B2427722	
Drawing number	B2427722-JAC-HGN-PE_02-DR-CH-0004	Rev
		<b>P03</b>

© Copyright 2024 Jacobs U.K. Limited. The concepts and information contained in this document are the property of Jacobs. Use or copying of this document in whole or in part without the written permission of Jacobs constitutes an infringement of copyright. Limitation: This drawing has been prepared on behalf of, and for the exclusive use of Jacobs Client, and is subject to, and issued in accordance with, the provisions of the contract between Jacobs and the Client. Jacobs accepts no liability or responsibility whatsoever for or in respect of, any use of, or reliance upon, this drawing by any third party.



C:\pwworking\jacobs-emea-01\0410587\B2427722-JAC-HGN-PE\_02-DR-CH-0005.dwg - 18/12/2024 12:30:49 - SHEET 05 - Gandhik



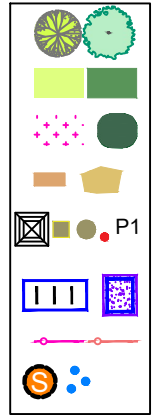
FOR CONTINUATION SEE SHEET 3

FOR CONTINUATION SEE SHEET 2

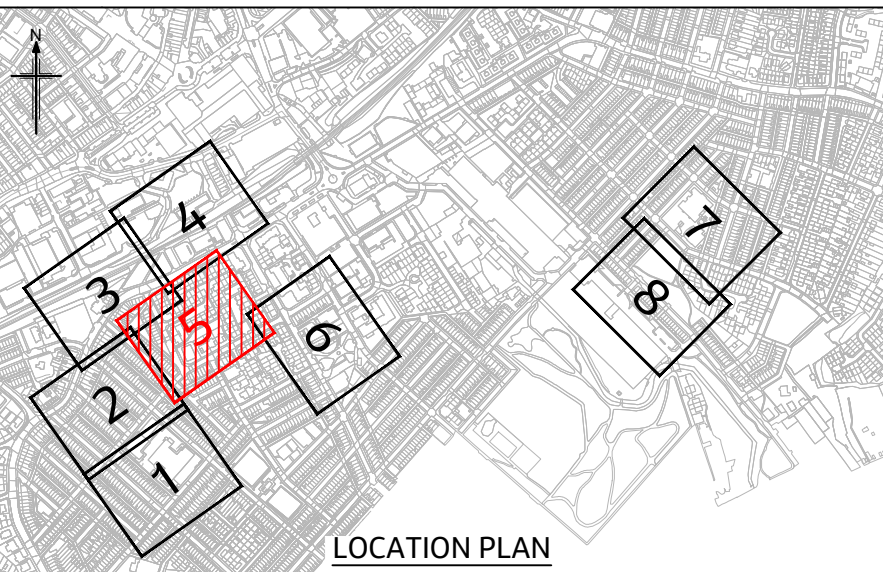
FOR CONTINUATION SEE SHEET 4

- NOTES:
1. All dimensions in metres unless stated otherwise.
  2. Drawings to be printed in colour to enable correct viewing of symbols.
  3. Do not scale from this drawing.
  4. This drawing is to be read in conjunction with the associated contract series drawings, documents, and appendices.
  5. The Contractor shall verify the presence and location of all services before undertaking any work in any area of the site by carrying out a full non-intrusive survey of the entire site before commencing the works.

- KEY:
- Proposed kerb
  - Proposed edging
  - Proposed drainage channel, refer to series 500 and 1100 drawings for details
  - Proposed scheme boundary
  - Proposed tactile paving in red colour (blister)
  - Proposed tactile paving in buff colour (blister)
  - Proposed footway
  - Proposed raised table ramp
  - Proposed raised table
  - Proposed carriageway resurfacing
  - Proposed green area
  - Proposed pedestrian guardrail in Optitrail type V4, colour in blue, or similar approved
  - Proposed road markings
  - Proposed sign and post
  - Proposed asphalt concrete speed cushion



- Proposed bollards in Optitrail type V4, colour in blue, or similar approved
- Proposed earthworks tadpoles
- Proposed street lighting, refer to series 1300 drawings for details
- Proposed gully, refer to series 500 drawings for details
- Proposed Traffic signal, refer to series 1200 drawings for details



Rev	Rev. Date	Purpose of revision	Drawn	Checked	Rev'd	Appr'd
P01	02/09/24	SUITABLE FOR RSA 2 AUDIT	SS	GS	ML	AP
P02	04/10/24	Suitable For Review & Comment	AK	GS	GS	PB
P03	17/12/24	SUITABLE FOR TENDER	SS	MG	GS	AP

**Jacobs**  
7th Floor, 2 Colmore Square, 38 Colmore Circus  
Queensway, Birmingham, B4 6BN  
Tel: +44(0)121 237 4000 www.jacobs.com

Client  
**Lancashire County Council**

Project  
LUF Detailed Design

Drawing title  
**NELSON AREA  
GENERAL ARRANGEMENT  
SHEET 5 OF 8**

Drawing status  
**D2 - SUITABLE FOR TENDER**

Scale  
1:250  
DO NOT SCALE

Jacobs No.  
B2427722

Client no.  
B2427722

Drawing number  
B2427722-JAC-HGN-PE\_02-DR-CH-0005

Rev  
P03

© Copyright 2024 Jacobs U.K. Limited. The concepts and information contained in this document are the property of Jacobs. Use or copying of this document in whole or in part without the written permission of Jacobs constitutes an infringement of copyright. Limitation: This drawing has been prepared on behalf of, and for the exclusive use of, Jacobs Client, and is subject to, and issued in accordance with, the provisions of the contract between Jacobs and the Client. Jacobs accepts no liability or responsibility whatsoever for, or in respect of, any use of, or reliance upon, this drawing by any third party.



C:\pwworking\jacobs-emea-01\0410587\B2427722-JAC-HGN-PE\_02-DR-CH-0006.dwg - 18/12/2024 12:31:24 - SHEET 06 - Gandhik



**NOTES:**

- All dimensions in metres unless stated otherwise.
- Drawings to be printed in colour to enable correct viewing of symbols.
- Do not scale from this drawing.
- This drawing is to be read in conjunction with the associated contract series drawings, documents, and appendices.
- The Contractor shall verify the presence and location of all services before undertaking any work in any area of the site by carrying out a full non-intrusive survey of the entire site before commencing the works.

**KEY:**

- Proposed kerb
- Proposed edging
- Proposed drainage channel, refer to series 500 and 1100 drawings for details
- Proposed scheme boundary
- Proposed tactile paving in red colour (blister)
- Proposed tactile paving in buff colour (blister)
- Proposed footway
- Proposed raised table ramp
- Proposed raised table
- Proposed carriageway resurfacing
- Proposed green area
- Proposed pedestrian guardrail in Optitrail type V4, colour in blue, or similar approved
- Proposed road markings
- Proposed sign and post
- Proposed asphalt concrete speed cushion

Proposed landscape features, refer to series 3000 drawings for details

- Proposed bollards in Optitrail type V4, colour in blue, or similar approved
- Proposed earthworks tadpoles
- Proposed street lighting, refer to series 1300 drawings for details
- Proposed gully, refer to series 500 drawings for details
- Proposed Traffic signal, refer to series 1200 drawings for details

**LOCATION PLAN**

P01	02/09/24	SUITABLE FOR RSA 2 AUDIT	SS	GS	ML	AP
P02	04/10/24	Suitable For Review & Comment	AK	GS	G5	PB
P03	17/12/24	SUITABLE FOR TENDER	SS	MG	G5	AP
Rev	Rev. Date	Purpose of revision	Drawn	Checked	Rev'd	Apprv'd

**Jacobs**  
7th Floor, 2 Colmore Square, 38 Colmore Circus  
Queensway, Birmingham, B4 6BN  
Tel: +44(0)121 237 4000 www.jacobs.com

Client

**Lancashire County Council**

Project

LUF Detailed Design

Drawing title

**NELSON AREA  
GENERAL ARRANGEMENT  
SHEET 6 OF 8**

Drawing status

**D2 - SUITABLE FOR TENDER**

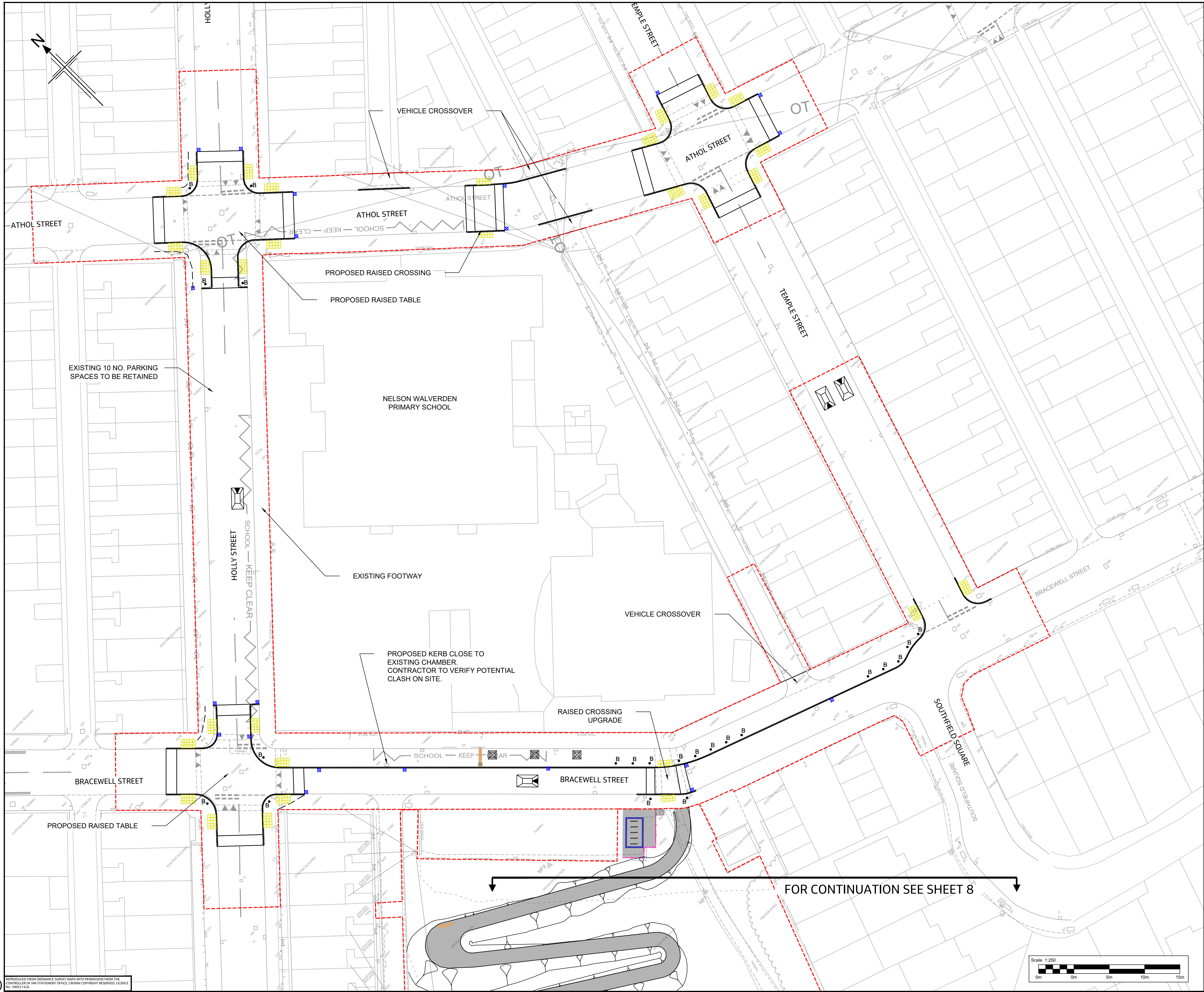
Scale	1:250	DO NOT SCALE
Jacobs No.	B2427722	
Client no.	B2427722	
Drawing number	B2427722-JAC-HGN-PE_02-DR-CH-0006	Rev
		<b>P03</b>

© Copyright 2024 Jacobs U.K. Limited. The concepts and information contained in this document are the property of Jacobs. Use or copying of this document in whole or in part without the written permission of Jacobs constitutes an infringement of copyright. Limitation: This drawing has been prepared on behalf of, and for the exclusive use of Jacobs Client, and is subject to, and issued in accordance with, the provisions of the contract between Jacobs and the Client. Jacobs accepts no liability or responsibility whatsoever for or in respect of, any use of, or reliance upon, this drawing by any third party.

FOR CONTINUATION SEE SHEET 5



C:\pwworking\jacobs-emea-01\0410587\B2427722-JAC-HGN-PE\_02-DR-CH-0007.dwg - 18/12/2024 12:31:51 - SHEET 07 - Gandhik



Rev	Rev. Date	Purpose of revision	Drawn	Checked	Rev'd	Apprv'd
P01	02/09/24	SUITABLE FOR RSA 2 AUDIT	SS	GS	ML	AP
P02	04/10/24	Suitable For Review & Comment	AK	GS	GS	PB
P03	17/12/24	SUITABLE FOR TENDER	SS	MG	GS	AP

**Jacobs**  
7th Floor, 2 Colmore Square, 38 Colmore Circus  
Queensway, Birmingham, B4 6BN  
Tel: +44(0)121 237 4000 www.jacobs.com

Client  
**Lancashire County Council**

Project  
LUF Detailed Design

Drawing title  
**NELSON AREA  
GENERAL ARRANGEMENT  
SHEET 7 OF 8**

Drawing status	D2 - SUITABLE FOR TENDER		
Scale	1:250	DO NOT SCALE	
Jacobs No.	B2427722		
Client no.	B2427722		
Drawing number	B2427722-JAC-HGN-PE_02-DR-CH-0007	Rev	P03

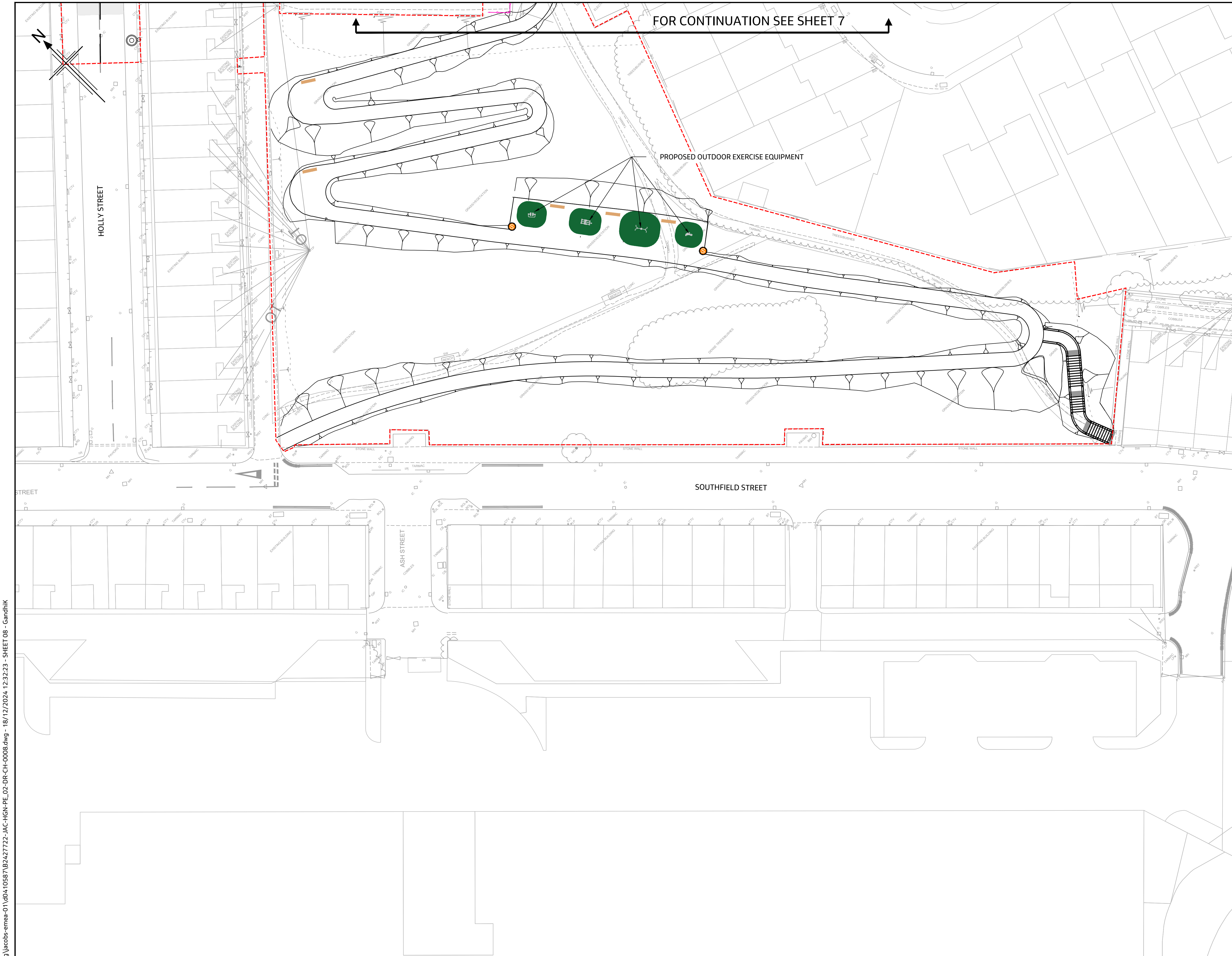
© Copyright 2024 Jacobs U.K. Limited. The concepts and information contained in this document are the property of Jacobs. Use or copying of this document in whole or in part without the written permission of Jacobs constitutes an infringement of copyright. Limitation: This drawing has been prepared on behalf of, and for the exclusive use of Jacobs Client, and is subject to, and issued in accordance with, the provisions of the contract between Jacobs and the Client. Jacobs accepts no liability or responsibility whatsoever for, or in respect of, any use of, or reliance upon, this drawing by any third party.



C:\pwworking\jacobs-emea-01\0410587\B2427722-JAC-HGN-PE\_02-DR-CH-0008.dwg - 18/12/2024 12:32:23 - SHEET 08 - Gandhik



REPRODUCED FROM ORDNANCE SURVEY MAPS WITH PERMISSION FROM THE  
CONTROLLER OF HM STATIONERY OFFICE. CROWN COPYRIGHT RESERVED. LICENCE  
No. 100021124.

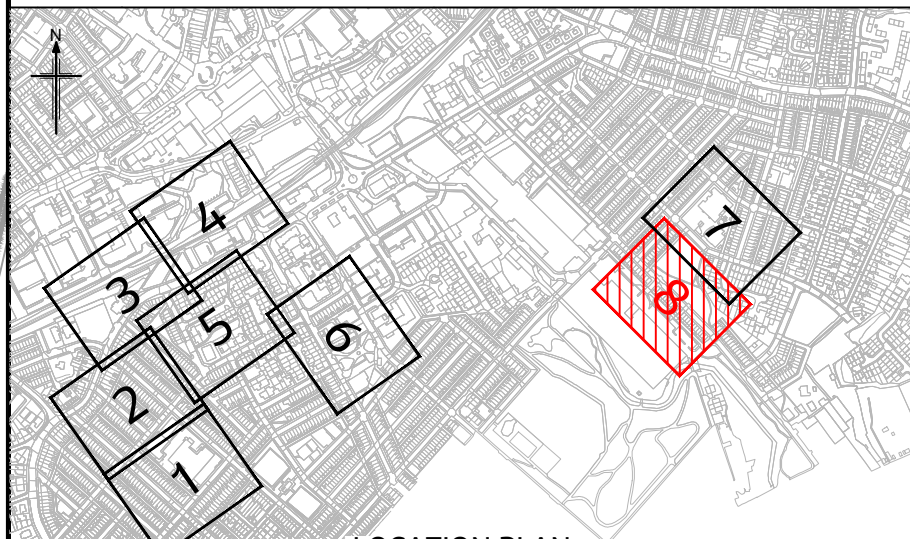


FOR CONTINUATION SEE SHEET 7

- NOTES:
1. All dimensions in metres unless stated otherwise.
  2. Drawings to be printed in colour to enable correct viewing of symbols.
  3. Do not scale from this drawing.
  4. This drawing is to be read in conjunction with the associated contract series drawings, documents, and appendices.
  5. The Contractor shall verify the presence and location of all services before undertaking any work in any area of the site by carrying out a full non-intrusive survey of the entire site before commencing the works.

- KEY:
- Proposed kerb
  - Proposed edging
  - Proposed drainage channel, refer to series 500 and 1100 drawings for details
  - Proposed scheme boundary
  - Proposed tactile paving in red colour (blister)
  - Proposed tactile paving in buff colour (blister)
  - Proposed footway
  - Proposed raised table ramp
  - Proposed raised table
  - Proposed carriageway resurfacing
  - Proposed green area
  - Proposed pedestrian guardrail in Optitrail type V4, colour in blue, or similar approved
  - Proposed road markings
  - Proposed sign and post
  - Proposed asphalt concrete speed cushion

- Proposed landscape features, refer to series 3000 drawings for details
- Proposed bollards in Optitrail type V4, colour in blue, or similar approved
- Proposed earthworks tadpoles
- Proposed street lighting, refer to series 1300 drawings for details
- Proposed gully, refer to series 500 drawings for details
- Proposed Traffic signal, refer to series 1200 drawings for details



LOCATION PLAN						
P01	02/09/24	SUITABLE FOR RSA 2 AUDIT	SS	GS	ML	AP
P02	04/10/24	Suitable For Review & Comment	AK	GS	GS	PB
P03	17/12/24	SUITABLE FOR TENDER	SS	MG	GS	AP
Rev	Rev. Date	Purpose of revision	Drawn	Checked	Rev'd	Appr'd

**Jacobs**  
7th Floor, 2 Colmore Square, 38 Colmore Circus  
Queensway, Birmingham, B4 6BN  
Tel: +44(0)121 237 4000 www.jacobs.com

Client  
**Lancashire**  
County Council

Project  
LUF Detailed Design

Drawing title  
**NELSON AREA**  
**GENERAL ARRANGEMENT**  
**SHEET 8 OF 8**

Drawing status  
**D2 - SUITABLE FOR TENDER**

Scale	1:250	DO NOT SCALE
Jacobs No.	B2427722	
Client no.	B2427722	

Drawing number	B2427722-JAC-HGN-PE_02-DR-CH-0008	Rev	P03
----------------	-----------------------------------	-----	-----

© Copyright 2024 Jacobs U.K. Limited. The concepts and information contained in this document are the property of Jacobs. Use or copying of this document in whole or in part without the written permission of Jacobs constitutes an infringement of copyright. Limitation: This drawing has been prepared on behalf of, and for the exclusive use of Jacobs Client, and is subject to, and issued in accordance with, the provisions of the contract between Jacobs and the Client. Jacobs accepts no liability or responsibility whatsoever for or in respect of, any use of, or reliance upon, this drawing by any third party.