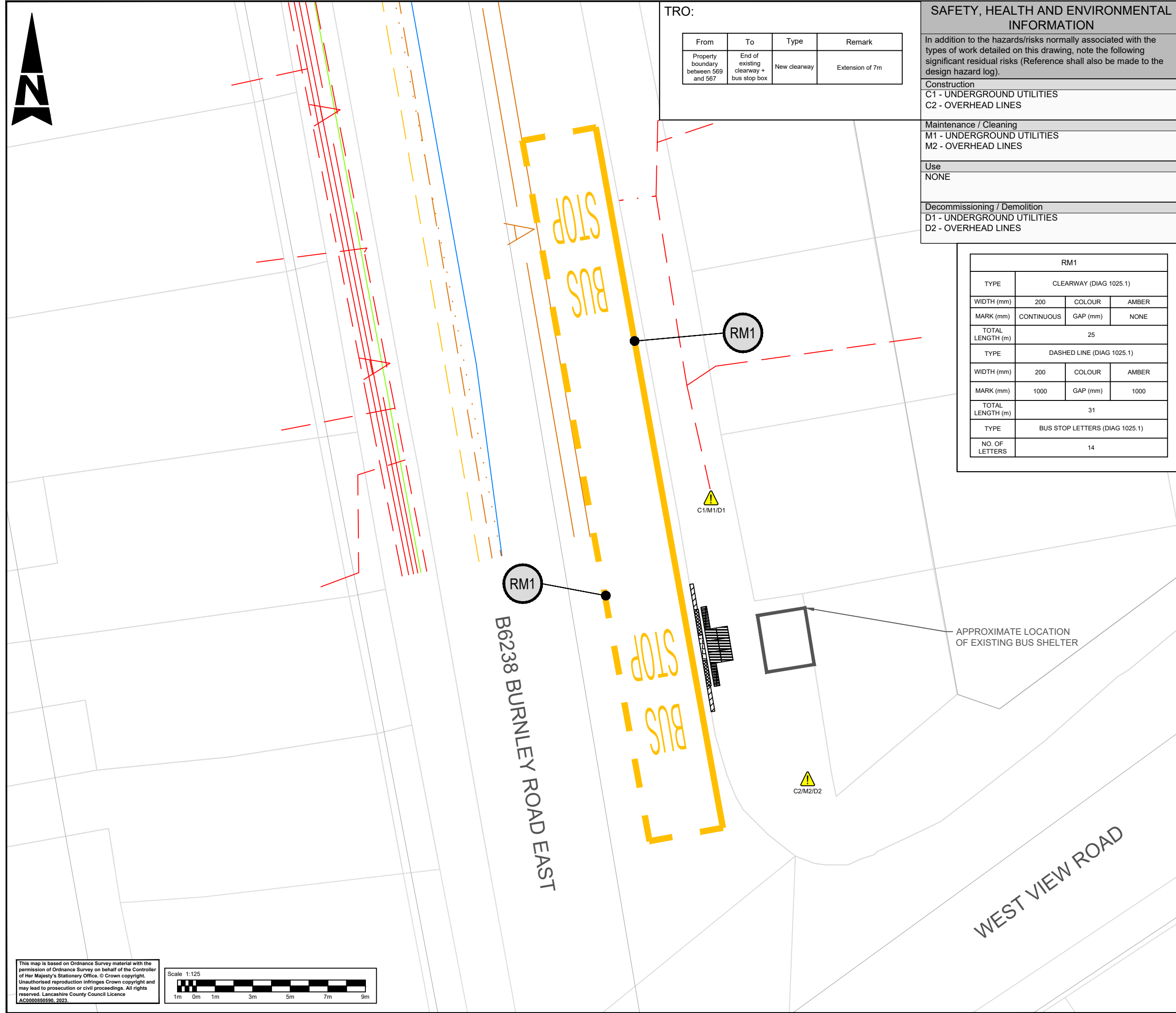


DO NOT SCALE

Millimetres
100
10
0



TRO:

From	To	Type	Remark
Property boundary between 569 and 567	End of existing clearway + bus stop box	New clearway	Extension of 7m

SAFETY, HEALTH AND ENVIRONMENTAL INFORMATION

In addition to the hazards/risks normally associated with the types of work detailed on this drawing, note the following significant residual risks (Reference shall also be made to the design hazard log).

Construction
C1 - UNDERGROUND UTILITIES
C2 - OVERHEAD LINES

Maintenance / Cleaning
M1 - UNDERGROUND UTILITIES
M2 - OVERHEAD LINES

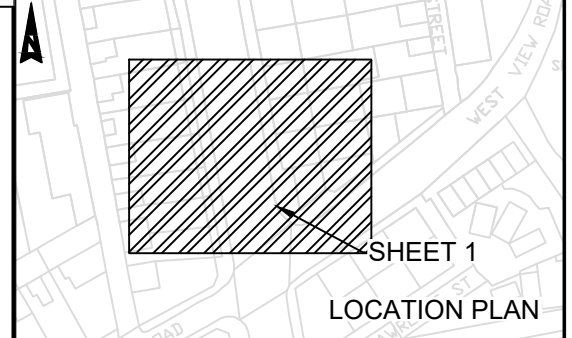
Use
NONE

Decommissioning / Demolition
D1 - UNDERGROUND UTILITIES
D2 - OVERHEAD LINES

RM1			
TYPE	CLEARWAY (DIAG 1025.1)		
WIDTH (mm)	200	COLOUR	AMBER
MARK (mm)	CONTINUOUS	GAP (mm)	NONE
TOTAL LENGTH (m)	25		
TYPE	DASHED LINE (DIAG 1025.1)		
WIDTH (mm)	200	COLOUR	AMBER
MARK (mm)	1000	GAP (mm)	1000
TOTAL LENGTH (m)	31		
TYPE	BUS STOP LETTERS (DIAG 1025.1)		
NO. OF LETTERS	14		

- KEY:**
- BUS STOP FLAG
 - 400x400 TACTILE PAVING
 - 200x100 TACTILE PAVING
 - BULLNOSE KERB 160 FACE
 - BULLNOSE KERB 160 TO 130 FACE
 - TRANSITION KERB 130 TO 100 FACE
 - BUS STOP MARKINGS
 - HSE HAZARD TRIANGLE FOR MORE INFORMATION REFER TO SHE BOX

- NOTES:**
- REFER TO LCC STANDARD BUS STOP DETAIL DRAWING FOR DIMENSIONS OF THE TACTILE PAVING, KERB DIMENSIONS (TYPES) AND KERB HEIGHTS
 - REFER TO DRAWING LCCBSA-ATK-HGN-ZZ-DR-CH-000045 FOR THE UTILITIES KEY
 - NO FEEDER PILLAR PRESENT - POWER TO BE SUPPLIED BY LAMPPOST NEXT TO BUS STOP
 - MATERIALS USED ON THE LAYOUT DRAWINGS ARE TO MATCH EXISTING MATERIALS ON SITE



Status	Rev	Drawn	Chk'd	Rev'd	Auth	Issue Date
Description						
A1	C01	KW	HK	JK	JK	14/02/24
Description						
A1	C02	KW	HK	JK	JK	24/04/24
Description						
A1	APPROVED - PUBLISHED					

AtkinsRéalis

Chadwick House
Birchwood Park
Warrington
WA3 6AE

Tel: +44 (0)1925 238000
Fax: +44 (0)1925 238500

Copyright © AtkinsRéalis (2023) www.AtkinsRealis.com

Client

Lancashire County Council

Project Title
EAST LANCASHIRE LUF BUS STOP ACCESSIBILITY IMPROVEMENTS

Drawing Title
BURNLEY ROAD EAST - WHITEWELL BOTTOM
BUS STOP ID: 2500LAA07100
DETAILED DESIGN

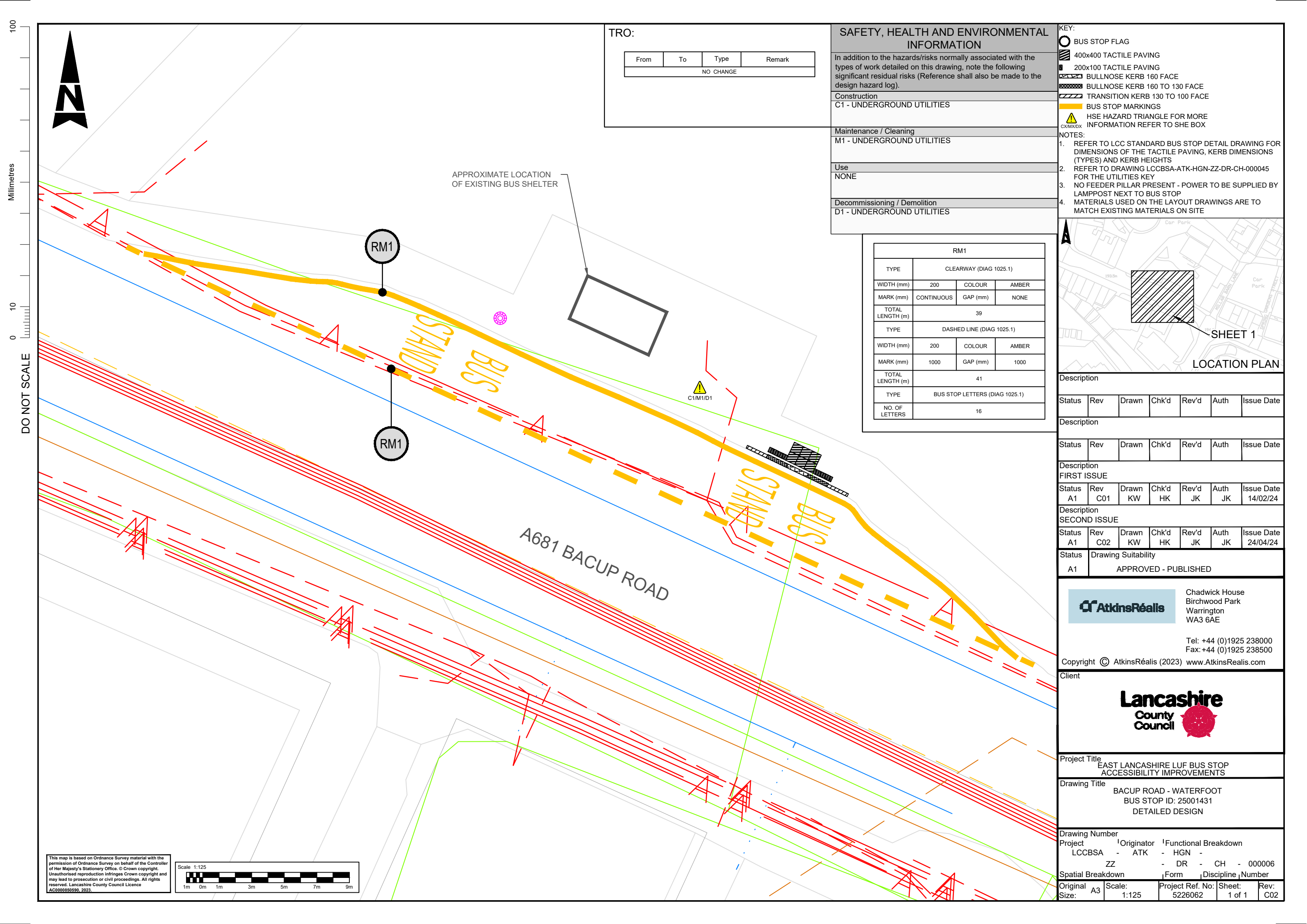
Drawing Number
Project Originator Functional Breakdown
LCCBSA - ATK - HGN - ZZ - DR - CH - 00005

Spatial Breakdown
Form Discipline Number

Original Size: A3
Scale: 1:125
Project Ref. No: 5226062
Sheet: 1 of 1
Rev: C02

This map is based on Ordnance Survey material with the permission of Ordnance Survey on behalf of the Controller of Her Majesty's Stationery Office. © Crown copyright. Unauthorised reproduction infringes Crown copyright and may lead to prosecution or civil proceedings. All rights reserved. Lancashire County Council Licence AC0000850590, 2023.





TRO:

From	To	Type	Remark
NO CHANGE			

SAFETY, HEALTH AND ENVIRONMENTAL INFORMATION

In addition to the hazards/risks normally associated with the types of work detailed on this drawing, note the following significant residual risks (Reference shall also be made to the design hazard log).

Construction	C1 - UNDERGROUND UTILITIES
Maintenance / Cleaning	M1 - UNDERGROUND UTILITIES
Use	NONE
Decommissioning / Demolition	D1 - UNDERGROUND UTILITIES

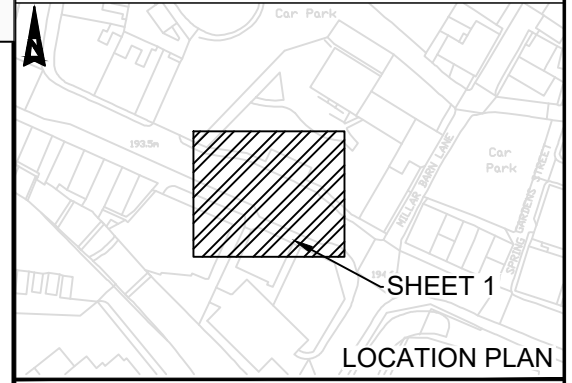
KEY:

- BUS STOP FLAG
- 400x400 TACTILE PAVING
- 200x100 TACTILE PAVING
- BULLNOSE KERB 160 FACE
- BULLNOSE KERB 160 TO 130 FACE
- TRANSITION KERB 130 TO 100 FACE
- BUS STOP MARKINGS
- HSE HAZARD TRIANGLE FOR MORE INFORMATION REFER TO SHE BOX

NOTES:

- REFER TO LCC STANDARD BUS STOP DETAIL DRAWING FOR DIMENSIONS OF THE TACTILE PAVING, KERB DIMENSIONS (TYPES) AND KERB HEIGHTS
- REFER TO DRAWING LCCBSA-ATK-HGN-ZZ-DR-CH-000045 FOR THE UTILITIES KEY
- NO FEEDER PILLAR PRESENT - POWER TO BE SUPPLIED BY LAMPPOST NEXT TO BUS STOP
- MATERIALS USED ON THE LAYOUT DRAWINGS ARE TO MATCH EXISTING MATERIALS ON SITE

RM1			
TYPE	CLEARWAY (DIAG 1025.1)		
WIDTH (mm)	200	COLOUR	AMBER
MARK (mm)	CONTINUOUS	GAP (mm)	NONE
TOTAL LENGTH (m)	39		
TYPE	DASHED LINE (DIAG 1025.1)		
WIDTH (mm)	200	COLOUR	AMBER
MARK (mm)	1000	GAP (mm)	1000
TOTAL LENGTH (m)	41		
TYPE	BUS STOP LETTERS (DIAG 1025.1)		
NO. OF LETTERS	16		



Status	Rev	Drawn	Chk'd	Rev'd	Auth	Issue Date
Description						
FIRST ISSUE						
A1	C01	KW	HK	JK	JK	14/02/24
Description						
SECOND ISSUE						
A1	C02	KW	HK	JK	JK	24/04/24
A1	Drawing Suitability					
APPROVED - PUBLISHED						

AtkinsRéalis

Chadwick House
Birchwood Park
Warrington
WA3 6AE

Tel: +44 (0)1925 238000
Fax: +44 (0)1925 238500

Copyright © AtkinsRéalis (2023) www.AtkinsRealis.com

Client

Lancashire County Council

Project Title
EAST LANCASHIRE LUF BUS STOP ACCESSIBILITY IMPROVEMENTS

Drawing Title
BACUP ROAD - WATERFOOT
BUS STOP ID: 25001431
DETAILED DESIGN

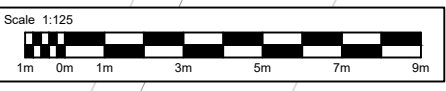
Drawing Number	Project	Originator	Functional Breakdown
	LCCBSA	- ATK	- HGN -
		ZZ	- DR - CH - 000006
Spatial Breakdown	Form	Discipline	Number
Original Size:	A3	Scale:	1:125
Project Ref. No:	5226062	Sheet:	1 of 1
Rev:	C02		

Millimetres

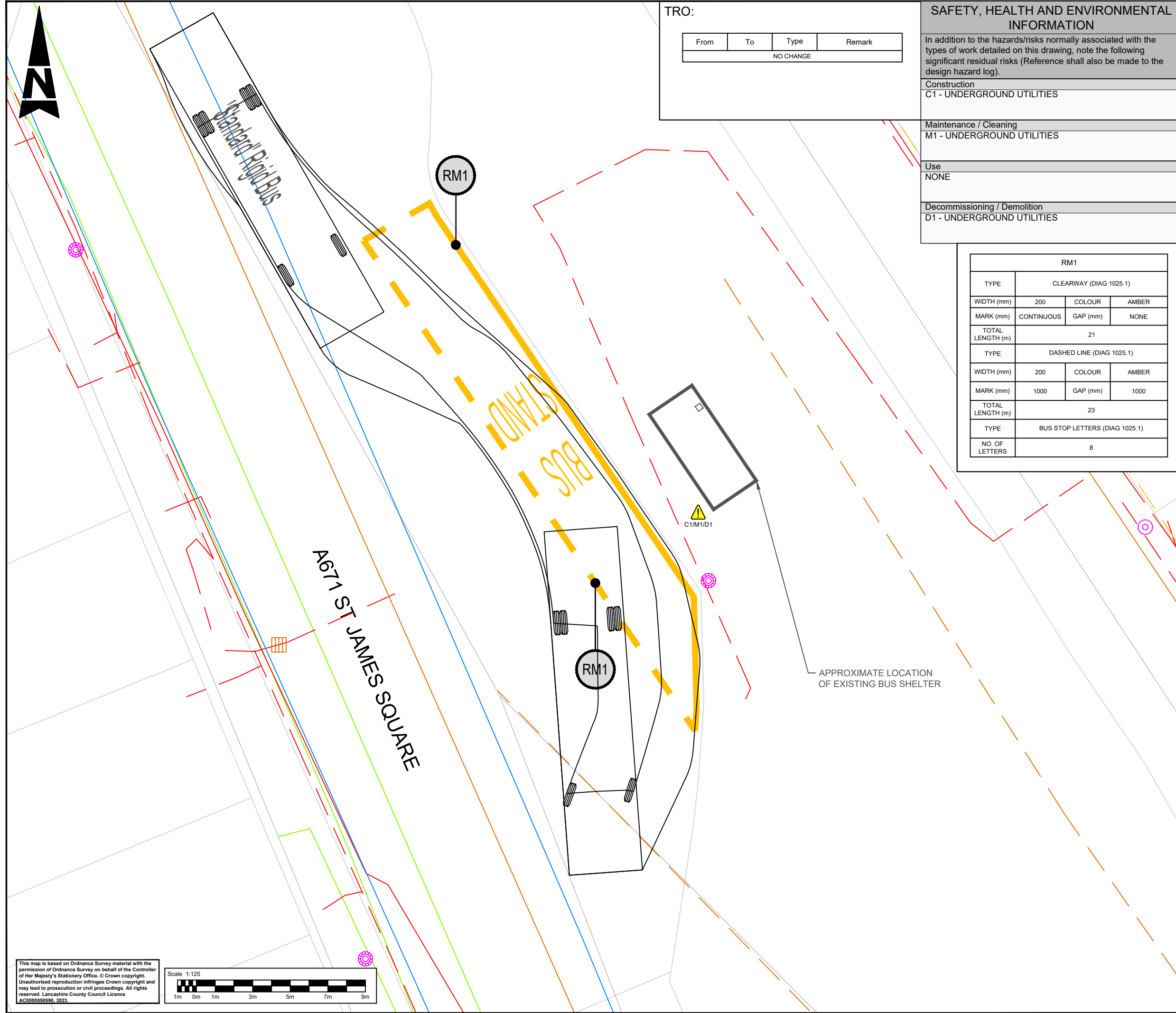
DO NOT SCALE



This map is based on Ordnance Survey material with the permission of Ordnance Survey on behalf of the Controller of Her Majesty's Stationery Office. © Crown copyright. Unauthorised reproduction infringes Crown copyright and may lead to prosecution or civil proceedings. All rights reserved. Lancashire County Council Licence AC000850590, 2023.



Millimetres
100
10
0
DO NOT SCALE



TRO:

From	To	Type	Remark
NO CHANGE			

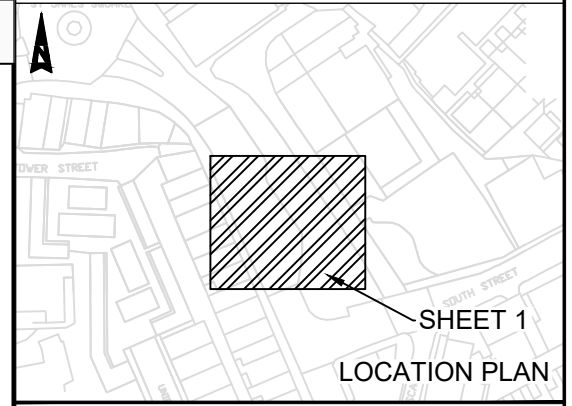
SAFETY, HEALTH AND ENVIRONMENTAL INFORMATION

In addition to the hazards/risks normally associated with the types of work detailed on this drawing, note the following significant residual risks (Reference shall also be made to the design hazard log).

Construction	C1 - UNDERGROUND UTILITIES
Maintenance / Cleaning	M1 - UNDERGROUND UTILITIES
Use	NONE
Decommissioning / Demolition	D1 - UNDERGROUND UTILITIES

RM1			
TYPE	CLEARWAY (DIAG 1025.1)		
WIDTH (mm)	200	COLOUR	AMBER
MARK (mm)	CONTINUOUS	GAP (mm)	NONE
TOTAL LENGTH (m)	21		
TYPE	DASHED LINE (DIAG 1025.1)		
WIDTH (mm)	200	COLOUR	AMBER
MARK (mm)	1000	GAP (mm)	1000
TOTAL LENGTH (m)	23		
TYPE	BUS STOP LETTERS (DIAG 1025.1)		
NO. OF LETTERS	8		

KEY:
 FEEDER PILLAR
 BUS STOP MARKINGS
 HSE HAZARD TRIANGLE FOR MORE INFORMATION REFER TO SHE BOX
 CXXM/DX
 NOTES:
 1. REFER TO LCC STANDARD BUS STOP DETAIL DRAWING FOR DIMENSIONS OF THE TACTILE PAVING, KERB DIMENSIONS (TYPES) AND KERB HEIGHTS
 2. REFER TO DRAWING LCCBSA-ATK-HGN-ZZ-DR-CH-000045 FOR THE UTILITIES KEY
 3. MATERIALS USED ON THE LAYOUT DRAWINGS ARE TO MATCH EXISTING MATERIALS ON SITE



Description						
Status	Rev	Drawn	Chk'd	Rev'd	Auth	Issue Date
Description						
Status	Rev	Drawn	Chk'd	Rev'd	Auth	Issue Date
Description						
FIRST ISSUE						
Status	Rev	Drawn	Chk'd	Rev'd	Auth	Issue Date
A1	C01	KW	HK	JK	JK	14/02/24
Description						
SECOND ISSUE						
Status	Rev	Drawn	Chk'd	Rev'd	Auth	Issue Date
A1	C02	KW	HK	JK	JK	24/04/24
Status	Drawing Suitability					
A1	APPROVED - PUBLISHED					

AtkinsRéalis
 Chadwick House
 Birchwood Park
 Warrington
 WA3 6AE
 Tel: +44 (0)1925 238000
 Fax: +44 (0)1925 238500
 Copyright © AtkinsRéalis (2023) www.AtkinsRealis.com

Client

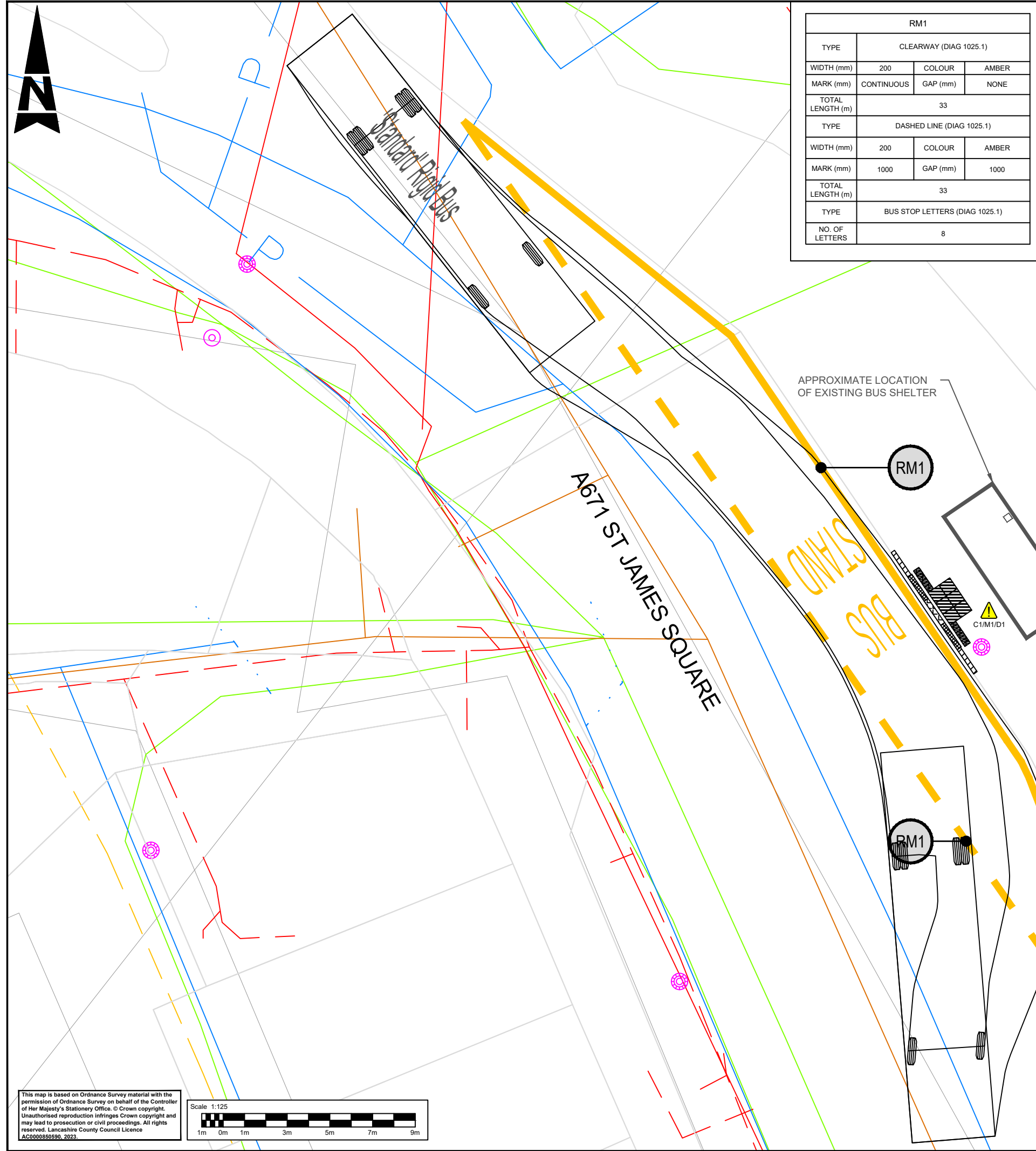
Project Title
 EAST LANCASHIRE LUF BUS STOP ACCESSIBILITY IMPROVEMENTS
 Drawing Title
 ST JAMES STREET - BACUP
 BUS STOP ID: 2500DCL704
 DETAILED DESIGN

Drawing Number
 Project Originator Functional Breakdown
 LCCBSA - ATK - HGN - ZZ - DR - CH - 00007
 Spatial Breakdown Form Discipline Number
 Original A3 Scale: 1:125 Project Ref. No: 5226062 Sheet: 1 of 1 Rev: C02

This map is based on Ordnance Survey material with the permission of Ordnance Survey on behalf of the Controller of Her Majesty's Stationery Office. © Crown copyright. Unauthorised reproduction infringes Crown copyright and may lead to prosecution or civil proceedings. All rights reserved. Lancashire County Council Licence AC0000850590, 2023.



100
Millimetres
10
0
DO NOT SCALE



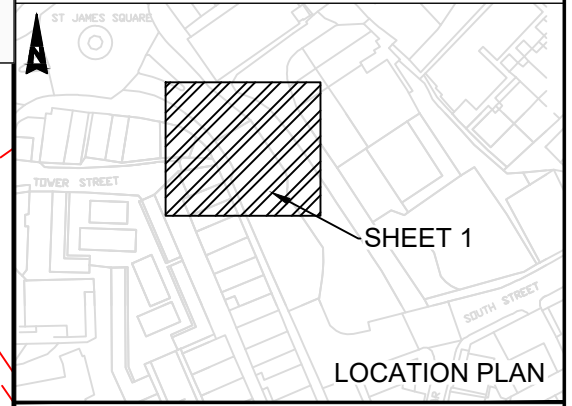
RM1			
CLEARWAY (DIAG 1025.1)			
TYPE	WIDTH (mm)	COLOUR	AMBER
MARK (mm)	CONTINUOUS	GAP (mm)	NONE
TOTAL LENGTH (m)	33		
DASHED LINE (DIAG 1025.1)			
TYPE	WIDTH (mm)	COLOUR	AMBER
MARK (mm)	1000	GAP (mm)	1000
TOTAL LENGTH (m)	33		
BUS STOP LETTERS (DIAG 1025.1)			
NO. OF LETTERS	8		

SAFETY, HEALTH AND ENVIRONMENTAL INFORMATION	
In addition to the hazards/risks normally associated with the types of work detailed on this drawing, note the following significant residual risks (Reference shall also be made to the design hazard log).	
Construction	C1 - UNDERGROUND UTILITIES
Maintenance / Cleaning	M1 - UNDERGROUND UTILITIES
Use	NONE
Decommissioning / Demolition	D1 - UNDERGROUND UTILITIES

KEY:	
	400x400 TACTILE PAVING
	200x100 TACTILE PAVING
	BULLNOSE KERB 160 FACE
	BULLNOSE KERB 160 TO 130 FACE
	TRANSITION KERB 130 TO 100 FACE
	FEEDER PILLAR
	BUS STOP MARKINGS
	HSE HAZARD TRIANGLE FOR MORE INFORMATION REFER TO SHE BOX

NOTES:

- REFER TO LCC STANDARD BUS STOP DETAIL DRAWING FOR DIMENSIONS OF THE TACTILE PAVING, KERB DIMENSIONS (TYPES) AND KERB HEIGHTS
- REFER TO DRAWING LCCBSA-ATK-HGN-ZZ-DR-CH-000045 FOR THE UTILITIES KEY
- MATERIALS USED ON THE LAYOUT DRAWINGS ARE TO MATCH EXISTING MATERIALS ON SITE



Description						
Status	Rev	Drawn	Chk'd	Rev'd	Auth	Issue Date
Description						
FIRST ISSUE						
A1	C01	KW	HK	JK	JK	14/02/24
Description						
SECOND ISSUE						
A1	C02	KW	HK	JK	JK	24/04/24
A1	DRAWING SUITABILITY APPROVED - PUBLISHED					

AtkinsRéalis
 Chadwick House
 Birchwood Park
 Warrington
 WA3 6AE
 Tel: +44 (0)1925 238000
 Fax: +44 (0)1925 238500
 Copyright © AtkinsRéalis (2023) www.AtkinsRealis.com

Client
Lancashire County Council

Project Title
 EAST LANCASHIRE LUF BUS STOP ACCESSIBILITY IMPROVEMENTS
 Drawing Title
 ST JAMES STREET - BACUP
 BUS STOP ID: 25001339
 DETAILED DESIGN

Drawing Number	Project	Originator	Functional Breakdown
	LCCBSA	- ATK	- HGN -
		ZZ	- DR - CH - 000008
Spatial Breakdown	Form	Discipline	Number
Original Size:	A3	Scale:	1:125
Project Ref. No:	5226062	Sheet:	1 of 1
Rev:	C02		

TRO:			
From	To	Type	Remark
NO CHANGE			

This map is based on Ordnance Survey material with the permission of Ordnance Survey on behalf of the Controller of Her Majesty's Stationery Office. © Crown copyright. Unauthorised reproduction infringes Crown copyright and may lead to prosecution or civil proceedings. All rights reserved. Lancashire County Council Licence AC0000850590, 2023.

Scale 1:125

100
Millimetres
10
0
DO NOT SCALE



TRO:

From	To	Type	Remark
End of existing clearway	Driveway threshold of 38 Broadway	Clearway + Bus box	Extension

SAFETY, HEALTH AND ENVIRONMENTAL INFORMATION

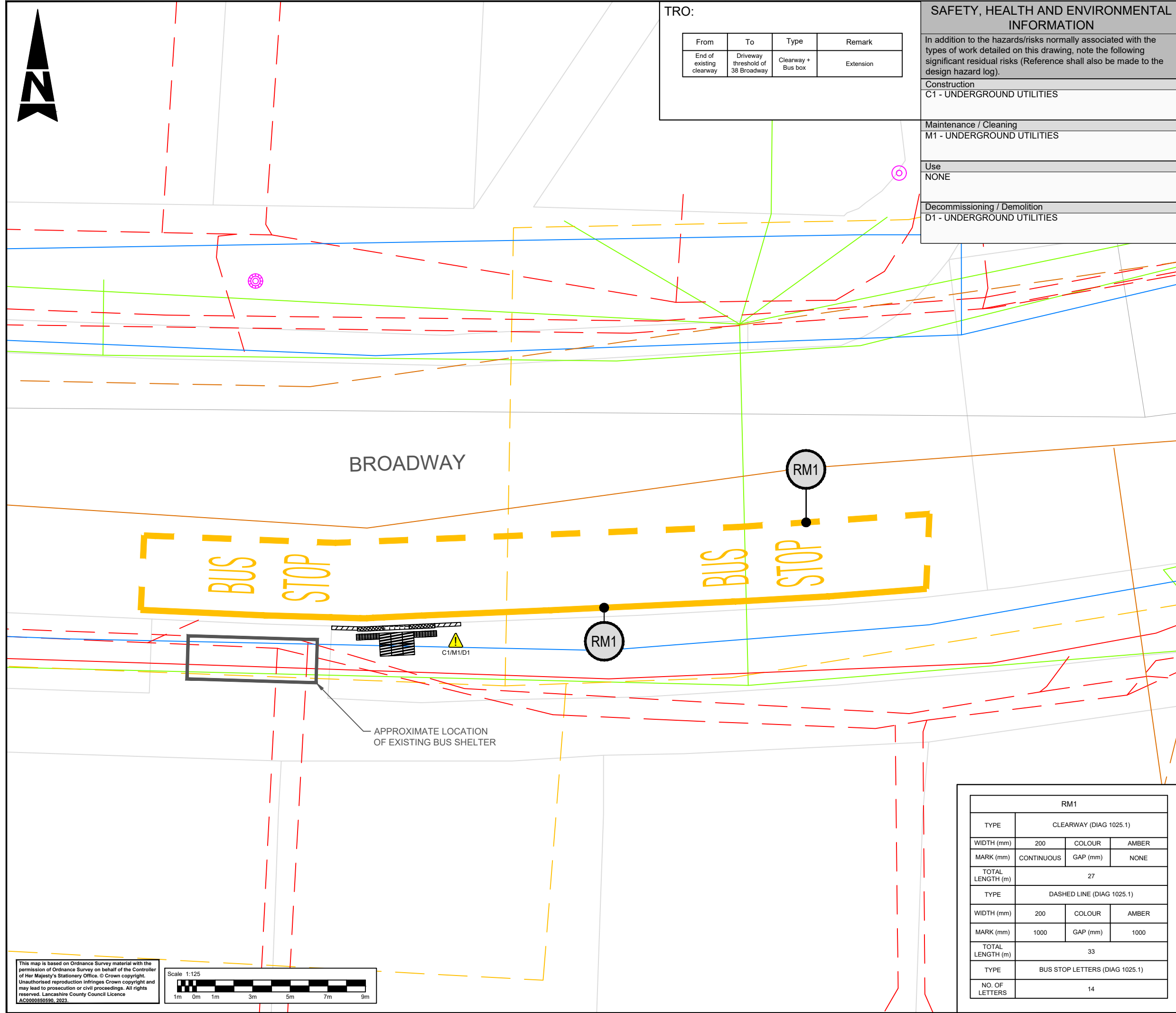
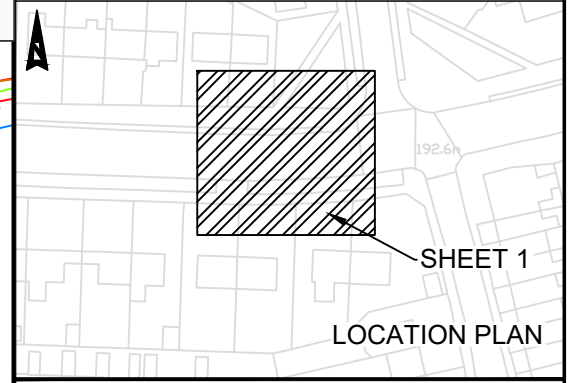
In addition to the hazards/risks normally associated with the types of work detailed on this drawing, note the following significant residual risks (Reference shall also be made to the design hazard log).

Construction	C1 - UNDERGROUND UTILITIES
Maintenance / Cleaning	M1 - UNDERGROUND UTILITIES
Use	NONE
Decommissioning / Demolition	D1 - UNDERGROUND UTILITIES

KEY:

	400x400 TACTILE PAVING
	200x100 TACTILE PAVING
	BULLNOSE KERB 160 FACE
	BULLNOSE KERB 160 TO 130 FACE
	TRANSITION KERB 130 TO 100 FACE
	BUS STOP MARKINGS
	HSE HAZARD TRIANGLE FOR MORE INFORMATION REFER TO SHE BOX

- NOTES:
- REFER TO LCC STANDARD BUS STOP DETAIL DRAWING FOR DIMENSIONS OF THE TACTILE PAVING, KERB DIMENSIONS (TYPES) AND KERB HEIGHTS
 - REFER TO DRAWING LCCBSA-ATK-HGN-ZZ-DR-CH-000045 FOR THE UTILITIES KEY
 - NO FEEDER PILLAR PRESENT - NEAREST SOURCE OF POWER CAN BE SEEN IS THE LIGHTING COLUMN ACROSS THE ROAD
 - BIN TO RELOCATE FROM ARRIVAL TO DEPARTURE END
 - REMOVE BUS STOP POLE AND MOUNT BUS STOP FLAG TO SHELTER



Description						
Status	Rev	Drawn	Chk'd	Rev'd	Auth	Issue Date
Description						
Status	Rev	Drawn	Chk'd	Rev'd	Auth	Issue Date
Description						
FIRST ISSUE						
Status	Rev	Drawn	Chk'd	Rev'd	Auth	Issue Date
A1	C01	KW	HK	JK	JK	14/02/24
Description						
SECOND ISSUE						
Status	Rev	Drawn	Chk'd	Rev'd	Auth	Issue Date
A1	C02	KW	HK	JK	JK	24/04/24
Status	Drawing Suitability					
A1	APPROVED - PUBLISHED					

AtkinsRéalis
Chadwick House
Birchwood Park
Warrington
WA3 6AE
Tel: +44 (0)1925 238000
Fax: +44 (0)1925 238500
Copyright © AtkinsRéalis (2023) www.AtkinsRealis.com



Client
Lancashire County Council

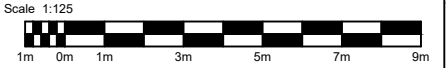
Project Title
EAST LANCASHIRE LUF BUS STOP ACCESSIBILITY IMPROVEMENTS

Drawing Title
BROADWAY ROAD - BROADWAY
BUS STOP ID: 2500IMG1975
DETAILED DESIGN

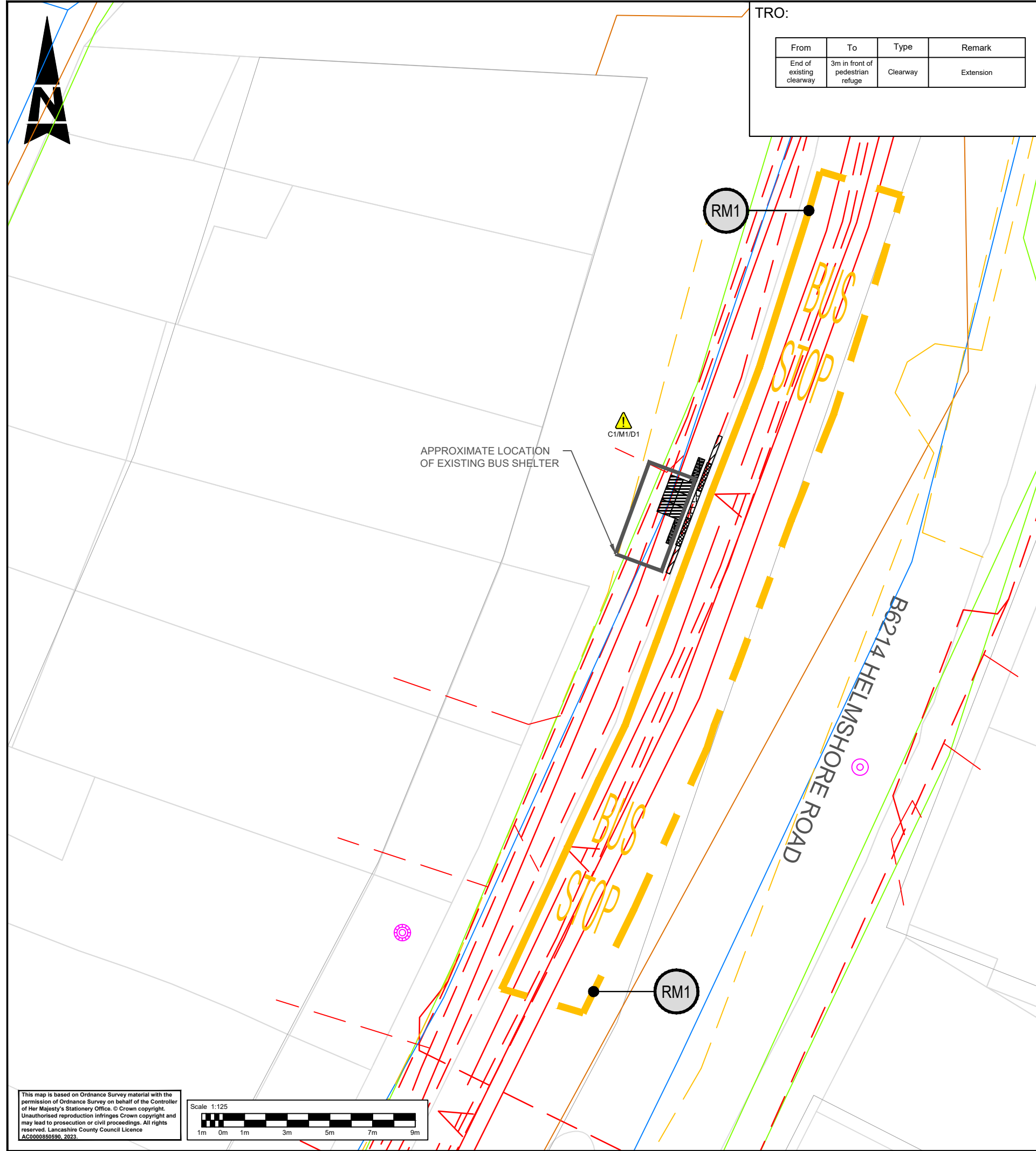
Drawing Number	Project			Originator	Functional Breakdown	
A3	LCCBSA	-	ATK	-	HGN	-
Scale:	ZZ		-	DR	-	CH
Scale:	1:125		-	000009		
Spatial Breakdown	Form	Discipline		Number		
Original Size:	A3	Scale:	1:125	Project Ref. No:	5226062	Sheet: 1 of 1
Rev:	C02					

RM1			
TYPE	CLEARWAY (DIAG 1025.1)		
WIDTH (mm)	200	COLOUR	AMBER
MARK (mm)	CONTINUOUS	GAP (mm)	NONE
TOTAL LENGTH (m)	27		
TYPE	DASHED LINE (DIAG 1025.1)		
WIDTH (mm)	200	COLOUR	AMBER
MARK (mm)	1000	GAP (mm)	1000
TOTAL LENGTH (m)	33		
TYPE	BUS STOP LETTERS (DIAG 1025.1)		
NO. OF LETTERS	14		

This map is based on Ordnance Survey material with the permission of Ordnance Survey on behalf of the Controller of Her Majesty's Stationery Office. © Crown copyright. Unauthorised reproduction infringes Crown copyright and may lead to prosecution or civil proceedings. All rights reserved. Lancashire County Council Licence AC0000850590, 2023.



100
Millimetres
10
0
DO NOT SCALE



TRO:

From	To	Type	Remark
End of existing clearway	3m in front of pedestrian refuge	Clearway	Extension

SAFETY, HEALTH AND ENVIRONMENTAL INFORMATION

In addition to the hazards/risks normally associated with the types of work detailed on this drawing, note the following significant residual risks (Reference shall also be made to the design hazard log).

Construction
C1 - UNDERGROUND UTILITIES

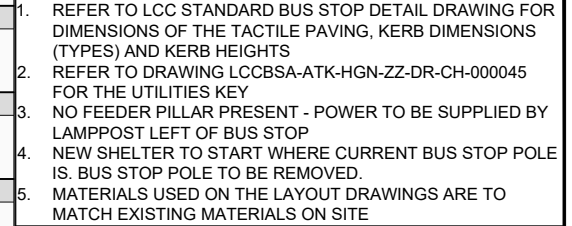
Maintenance / Cleaning
M1 - UNDERGROUND UTILITIES

Use
NONE

Decommissioning / Demolition
D1 - UNDERGROUND UTILITIES

RM1			
TYPE	CLEARWAY (DIAG 1025.1)		
WIDTH (mm)	200	COLOUR	AMBER
MARK (mm)	CONTINUOUS	GAP (mm)	NONE
TOTAL LENGTH (m)	27		
TYPE	DASHED LINE (DIAG 1025.1)		
WIDTH (mm)	200	COLOUR	AMBER
MARK (mm)	1000	GAP (mm)	1000
TOTAL LENGTH (m)	33		
TYPE	BUS STOP LETTERS (DIAG 1025.1)		
NO. OF LETTERS	14		

- KEY:
- 400x400 TACTILE PAVING
 - 200x100 TACTILE PAVING
 - BULLNOSE KERB 160 FACE
 - BULLNOSE KERB 160 TO 130 FACE
 - TRANSITION KERB 130 TO 100 FACE
 - BUS STOP MARKINGS
 - HSE HAZARD TRIANGLE FOR MORE INFORMATION REFER TO SHE BOX
- NOTES:
- REFER TO LCC STANDARD BUS STOP DETAIL DRAWING FOR DIMENSIONS OF THE TACTILE PAVING, KERB DIMENSIONS (TYPES) AND KERB HEIGHTS
 - REFER TO DRAWING LCCBSA-ATK-HGN-ZZ-DR-CH-000045 FOR THE UTILITIES KEY
 - NO FEEDER PILLAR PRESENT - POWER TO BE SUPPLIED BY LAMPOST LEFT OF BUS STOP
 - NEW SHELTER TO START WHERE CURRENT BUS STOP POLE IS. BUS STOP POLE TO BE REMOVED.
 - MATERIALS USED ON THE LAYOUT DRAWINGS ARE TO MATCH EXISTING MATERIALS ON SITE



Description	Status	Rev	Drawn	Chk'd	Rev'd	Auth	Issue Date
FIRST ISSUE	A1	C01	KW	HK	JK	JK	14/02/24
SECOND ISSUE	A1	C02	KW	HK	JK	JK	24/04/24

Description	Status	Rev	Drawn	Chk'd	Rev'd	Auth	Issue Date
Drawing Suitability	A1						
	APPROVED - PUBLISHED						

AtkinsRéalis
Chadwick House
Birchwood Park
Warrington
WA3 6AE
Tel: +44 (0)1925 238000
Fax: +44 (0)1925 238500
Copyright © AtkinsRéalis (2023) www.AtkinsRealis.com



Project Title
EAST LANCASHIRE LUF BUS STOP ACCESSIBILITY IMPROVEMENTS
Drawing Title
HELMSHORE ROAD - FLAX MOSS
BUS STOP ID: 250020211
DETAILED DESIGN

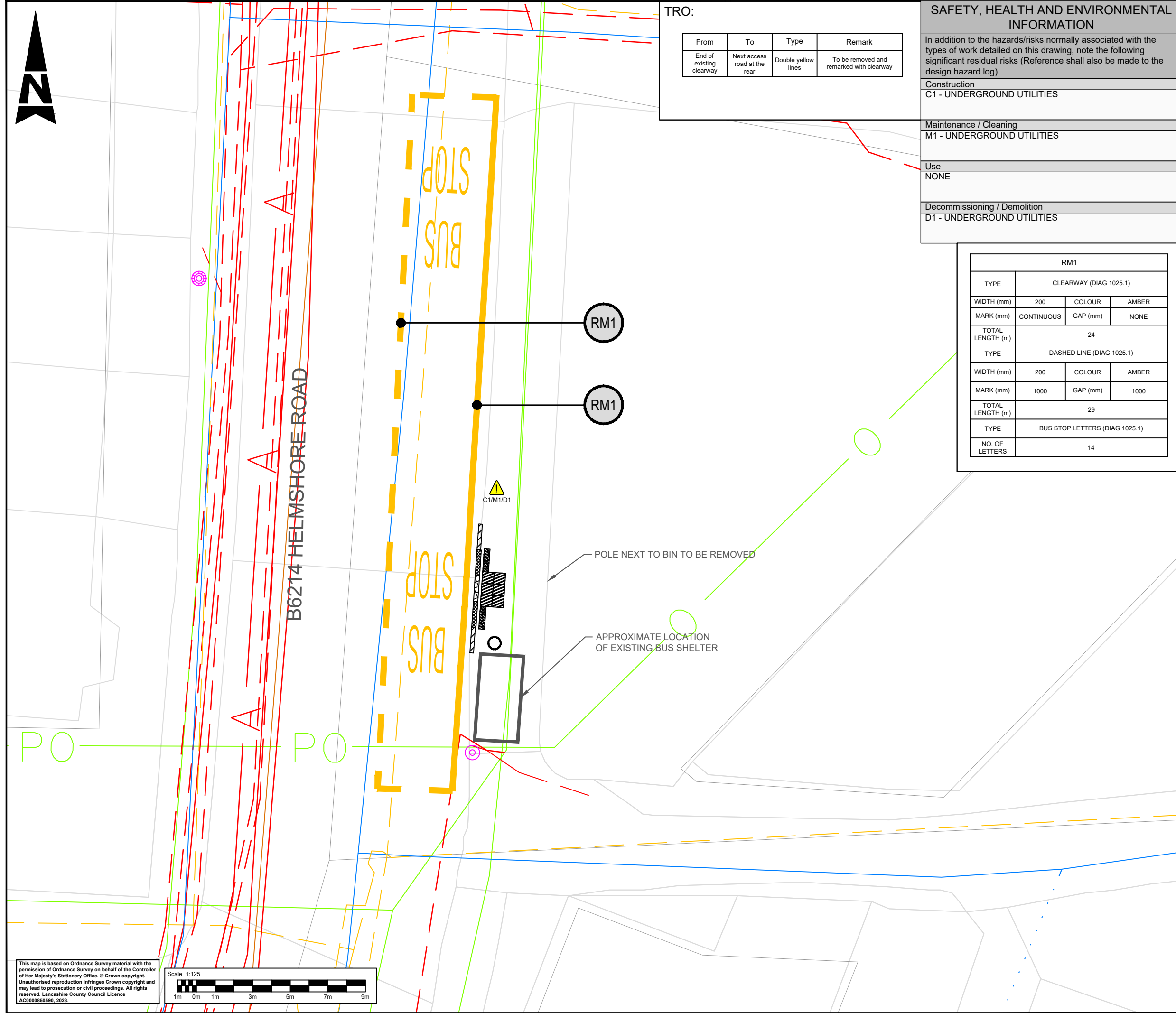
Drawing Number	Project	Originator	Functional Breakdown
	LCCBSA	- ATK	- HGN - ZZ - DR - CH - 000010
Spatial Breakdown	Form	Discipline	Number
Original Size:	A3	Scale:	1:125
Project Ref. No:	5226062	Sheet:	1 of 1
Rev:	C02		

This map is based on Ordnance Survey material with the permission of Ordnance Survey on behalf of the Controller of Her Majesty's Stationery Office. © Crown copyright. Unauthorised reproduction infringes Crown copyright and may lead to prosecution or civil proceedings. All rights reserved. Lancashire County Council Licence AC0000850590, 2023.

Scale 1:125

DO NOT SCALE

Millimetres



TRO:

From	To	Type	Remark
End of existing clearway	Next access road at the rear	Double yellow lines	To be removed and remarked with clearway

SAFETY, HEALTH AND ENVIRONMENTAL INFORMATION

In addition to the hazards/risks normally associated with the types of work detailed on this drawing, note the following significant residual risks (Reference shall also be made to the design hazard log).

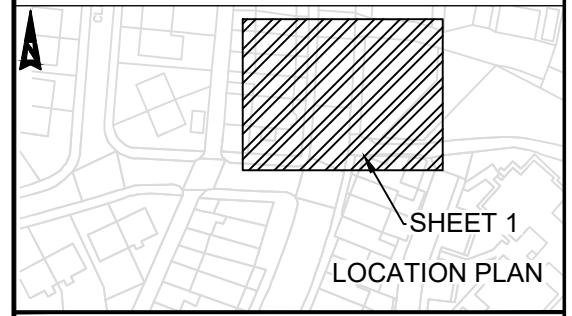
Construction	C1 - UNDERGROUND UTILITIES
Maintenance / Cleaning	M1 - UNDERGROUND UTILITIES
Use	NONE
Decommissioning / Demolition	D1 - UNDERGROUND UTILITIES

RM1			
TYPE	CLEARWAY (DIAG 1025.1)		
WIDTH (mm)	200	COLOUR	AMBER
MARK (mm)	CONTINUOUS	GAP (mm)	NONE
TOTAL LENGTH (m)	24		
TYPE	DASHED LINE (DIAG 1025.1)		
WIDTH (mm)	200	COLOUR	AMBER
MARK (mm)	1000	GAP (mm)	1000
TOTAL LENGTH (m)	29		
TYPE	BUS STOP LETTERS (DIAG 1025.1)		
NO. OF LETTERS	14		

KEY:

	BUS STOP FLAG
	400x400 TACTILE PAVING
	200x100 TACTILE PAVING
	BULLNOSE KERB 160 FACE
	BULLNOSE KERB 160 TO 130 FACE
	TRANSITION KERB 130 TO 100 FACE
	BUS STOP MARKINGS
	HSE HAZARD TRIANGLE FOR MORE INFORMATION REFER TO SHE BOX

- NOTES:
- REFER TO LCC STANDARD BUS STOP DETAIL DRAWING FOR DIMENSIONS OF THE TACTILE PAVING, KERB DIMENSIONS (TYPES) AND KERB HEIGHTS
 - REFER TO DRAWING LCCBSA-ATK-HGN-ZZ-DR-CH-000045 FOR THE UTILITIES KEY
 - NO FEEDER PILLAR PRESENT - POWER SUPPLY TO BE PROVIDED FROM THE LIGHTING COLUMN CLOSE TO THE RIGHT SIDE OF THE SHELTER
 - DUE TO LOW HEIGHT OF THE EXISTING KERB FACE - 2 OR 4 MORE KERB REPLACEMENTS REQUIRED TO BE LAID AS TRANSITION TO GET 100MM
 - MATERIALS USED ON THE LAYOUT DRAWINGS ARE TO MATCH EXISTING MATERIALS ON SITE



Status	Rev	Drawn	Chk'd	Rev'd	Auth	Issue Date

Status	Rev	Drawn	Chk'd	Rev'd	Auth	Issue Date

Description
FIRST ISSUE

Status	Rev	Drawn	Chk'd	Rev'd	Auth	Issue Date
A1	C01	KW	HK	JK	JK	14/02/24

Description
SECOND ISSUE

Status	Rev	Drawn	Chk'd	Rev'd	Auth	Issue Date
A1	C02	KW	HK	JK	JK	24/04/24

Status	A1	Drawing Suitability	APPROVED - PUBLISHED
--------	----	---------------------	----------------------

AtkinsRéalis

Chadwick House
Birchwood Park
Warrington
WA3 6AE

Tel: +44 (0)1925 238000
Fax: +44 (0)1925 238500

Copyright © AtkinsRéalis (2023) www.AtkinsRealis.com

Client

Lancashire County Council

Project Title
EAST LANCASHIRE LUF BUS STOP ACCESSIBILITY IMPROVEMENTS

Drawing Title
HELMSHORE ROAD - FLAX MOSS
BUS STOP ID: 25001386
DETAILED DESIGN

Drawing Number	Project			Originator	Functional Breakdown		
	LCCBSA	-	ATK	-	HGN	-	ZZ
				-	DR	-	CH - 000011
Spatial Breakdown	Form	Discipline	Number				
Original Size:	A3	Scale:	1:125	Project Ref. No:	5226062	Sheet:	1 of 1
				Rev:	C02		

This map is based on Ordnance Survey material with the permission of Ordnance Survey on behalf of the Controller of Her Majesty's Stationery Office. © Crown copyright. Unauthorised reproduction infringes Crown copyright and may lead to prosecution or civil proceedings. All rights reserved. Lancashire County Council Licence AC000850590, 2023.

Scale 1:125

100
Millimetres
10
0
DO NOT SCALE



TRO:

From	To	Type	Remark
NO CHANGE			

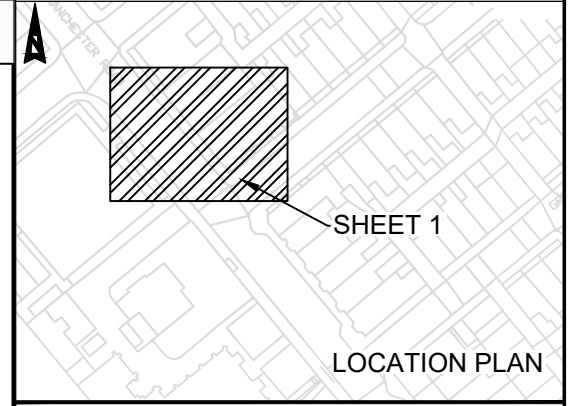
SAFETY, HEALTH AND ENVIRONMENTAL INFORMATION

In addition to the hazards/risks normally associated with the types of work detailed on this drawing, note the following significant residual risks (Reference shall also be made to the design hazard log).

Construction	C1 - UNDERGROUND UTILITIES
Maintenance / Cleaning	M1 - UNDERGROUND UTILITIES
Use	NONE
Decommissioning / Demolition	D1 - UNDERGROUND UTILITIES

- KEY:**
- BUS STOP FLAG
 - FEEDER PILLAR
 - BUS STOP MARKINGS
 - ⚠ HSE HAZARD TRIANGLE FOR MORE INFORMATION REFER TO SHE BOX
- NOTES:**
- REFER TO LCC STANDARD BUS STOP DETAIL DRAWING FOR DIMENSIONS OF THE TACTILE PAVING, KERB DIMENSIONS (TYPES) AND KERB HEIGHTS
 - REFER TO DRAWING LCCBSA-ATK-HGN-ZZ-DR-CH-000045 FOR THE UTILITIES KEY
 - RAISED KERB+BOARDING POINT ALREADY INSTALLED. CLEARWAY MARKING REFRESH. SHELTER TO BE REPLACED. POWERED POLE REQUIRED FOR RTIP DISPLAY.
 - MATERIALS USED ON THE LAYOUT DRAWINGS ARE TO MATCH EXISTING MATERIALS ON SITE

RM1			
TYPE	CLEARWAY (DIAG 1025.1)		
WIDTH (mm)	200	COLOUR	AMBER
MARK (mm)	CONTINUOUS	GAP (mm)	NONE
TOTAL LENGTH (m)	18		
TYPE	DASHED LINE (DIAG 1025.1)		
WIDTH (mm)	200	COLOUR	AMBER
MARK (mm)	1000	GAP (mm)	1000
TOTAL LENGTH (m)	23		
TYPE	BUS STOP LETTERS (DIAG 1025.1)		
NO. OF LETTERS	14		



Description						
Status	Rev	Drawn	Chk'd	Rev'd	Auth	Issue Date
Description						
FIRST ISSUE						
Status	Rev	Drawn	Chk'd	Rev'd	Auth	Issue Date
A1	C01	KW	HK	JK	JK	14/02/24
Description						
SECOND ISSUE						
Status	Rev	Drawn	Chk'd	Rev'd	Auth	Issue Date
A1	C02	KW	HK	JK	JK	24/04/24
Status	Drawing Suitability					
A1	APPROVED - PUBLISHED					

AtkinsRéalis

Chadwick House
Birchwood Park
Warrington
WA3 6AE

Tel: +44 (0)1925 238000
Fax: +44 (0)1925 238500

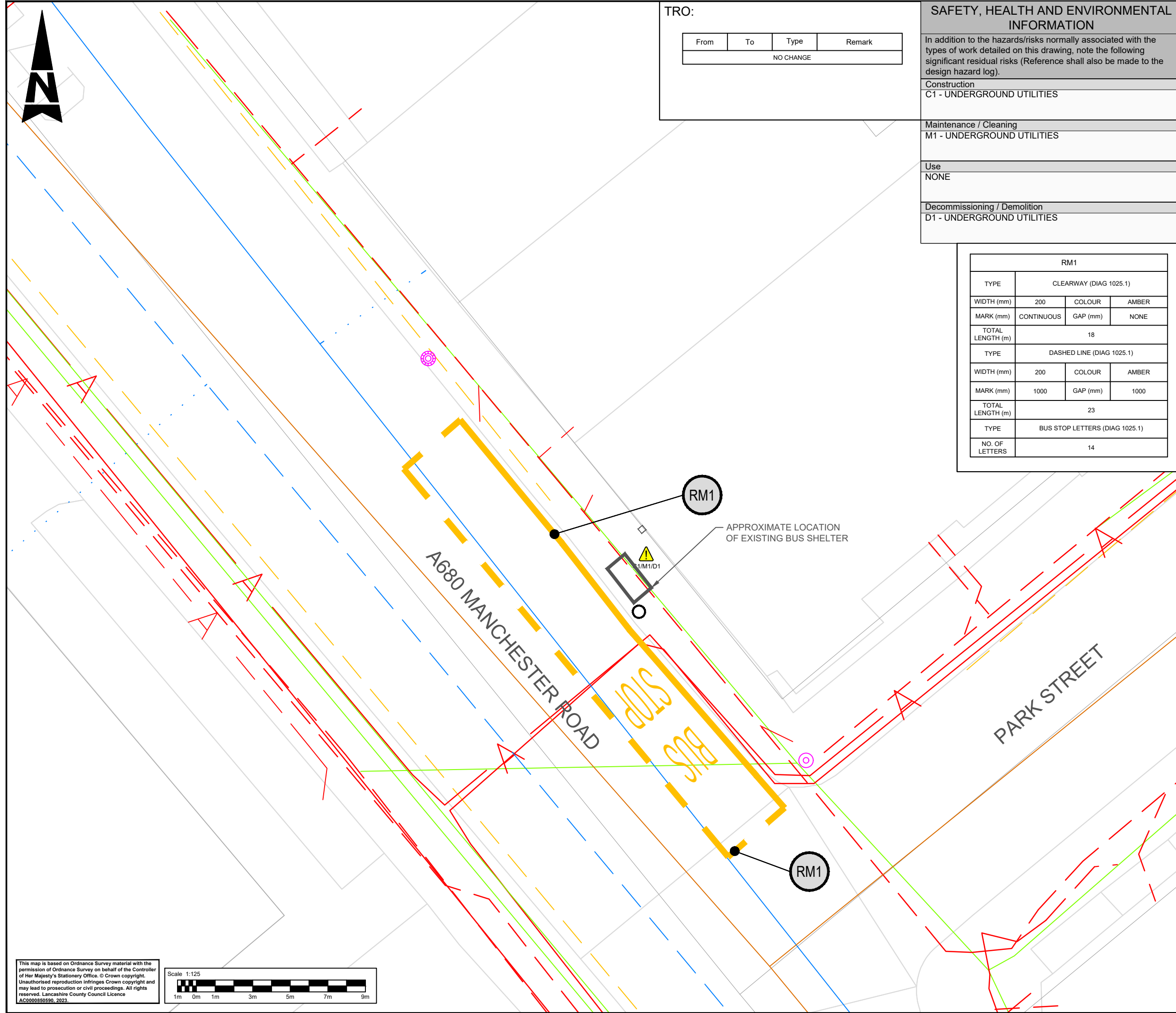
Copyright © AtkinsRéalis (2023) www.AtkinsRealis.com



Project Title
EAST LANCASHIRE LUF BUS STOP ACCESSIBILITY IMPROVEMENTS

Drawing Title
MANCHESTER ROAD - HASLINGDEN
BUS STOP ID: 25001372
DETAILED DESIGN

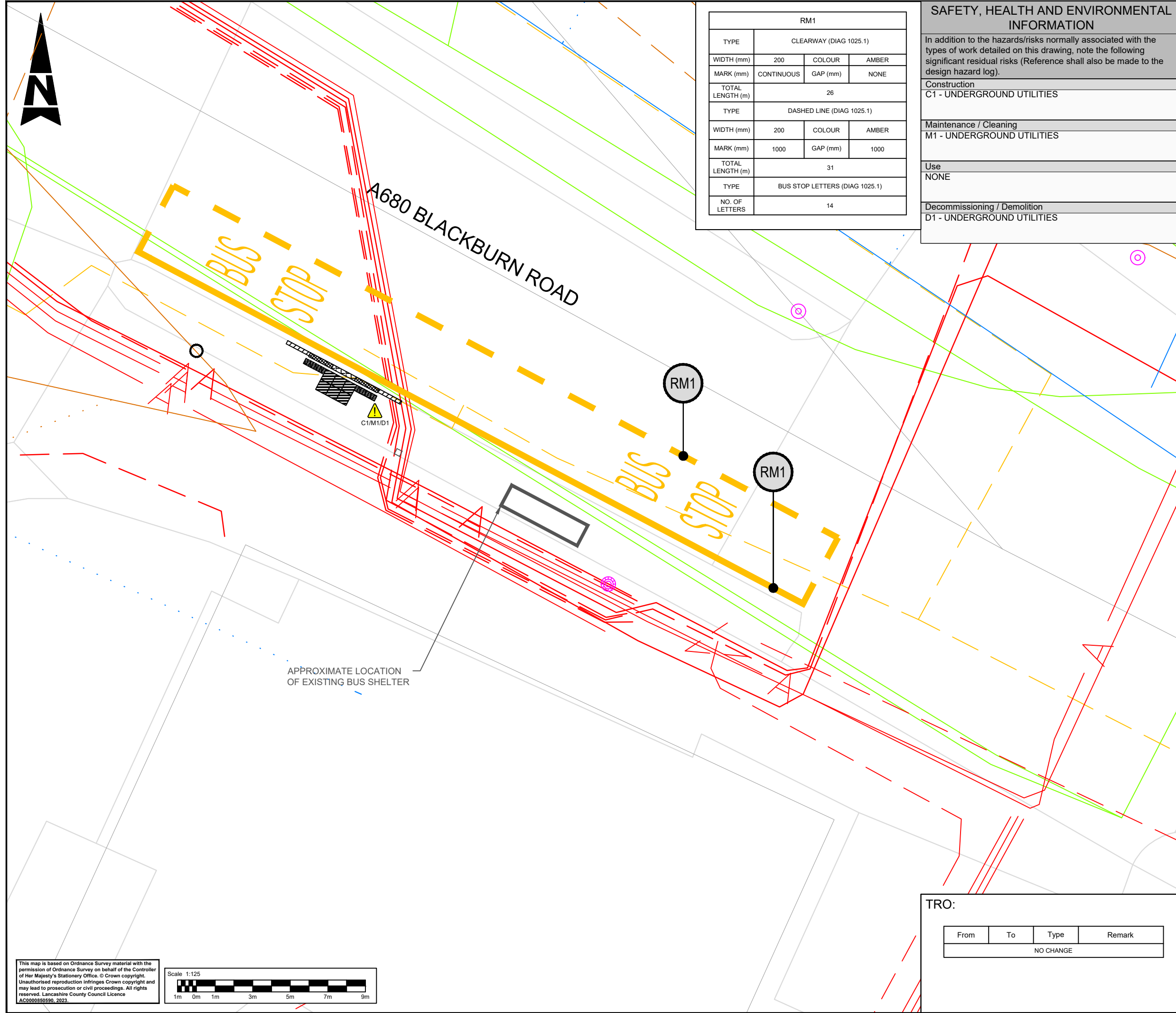
Drawing Number					
Project	Originator	Functional Breakdown			
LCCBSA	- ATK	- HGN	- ZZ	- DR	- CH - 000012
Spatial Breakdown	Form	Discipline	Number		
Original	A3	Scale:	Project Ref. No:	Sheet:	Rev:
Size:	1:125	5226062	1 of 1	C02	



This map is based on Ordnance Survey material with the permission of Ordnance Survey on behalf of the Controller of Her Majesty's Stationery Office. © Crown copyright. Unauthorised reproduction infringes Crown copyright and may lead to prosecution or civil proceedings. All rights reserved. Lancashire County Council Licence AC0000850590, 2023.

Scale 1:125

100
Millimetres
10
0
DO NOT SCALE



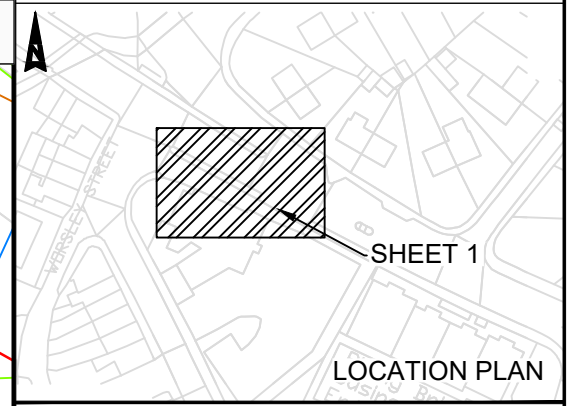
RM1			
CLEARWAY (DIAG 1025.1)			
WIDTH (mm)	200	COLOUR	AMBER
MARK (mm)	CONTINUOUS	GAP (mm)	NONE
TOTAL LENGTH (m)	26		
DASHED LINE (DIAG 1025.1)			
WIDTH (mm)	200	COLOUR	AMBER
MARK (mm)	1000	GAP (mm)	1000
TOTAL LENGTH (m)	31		
TYPE	BUS STOP LETTERS (DIAG 1025.1)		
NO. OF LETTERS	14		

SAFETY, HEALTH AND ENVIRONMENTAL INFORMATION	
In addition to the hazards/risks normally associated with the types of work detailed on this drawing, note the following significant residual risks (Reference shall also be made to the design hazard log).	
Construction	C1 - UNDERGROUND UTILITIES
Maintenance / Cleaning	M1 - UNDERGROUND UTILITIES
Use	NONE
Decommissioning / Demolition	D1 - UNDERGROUND UTILITIES

KEY:	
	BUS STOP FLAG
	400x400 TACTILE PAVING
	200x100 TACTILE PAVING
	BULLNOSE KERB 160 FACE
	BULLNOSE KERB 160 TO 130 FACE
	TRANSITION KERB 130 TO 100 FACE
	FEEDER PILLAR
	BUS STOP MARKINGS
	HSE HAZARD TRIANGLE FOR MORE INFORMATION REFER TO SHE BOX

NOTES:

- REFER TO LCC STANDARD BUS STOP DETAIL DRAWING FOR DIMENSIONS OF THE TACTILE PAVING, KERB DIMENSIONS (TYPES) AND KERB HEIGHTS
- REFER TO DRAWING LCCBSA-ATK-HGN-ZZ-DR-CH-000045 FOR THE UTILITIES KEY
- MATERIALS USED ON THE LAYOUT DRAWINGS ARE TO MATCH EXISTING MATERIALS ON SITE



Description						
Status	Rev	Drawn	Chk'd	Rev'd	Auth	Issue Date
Description						
FIRST ISSUE						
A1	C01	KW	HK	JK	JK	14/02/24
Description						
SECOND ISSUE						
A1	C02	KW	HK	JK	JK	24/04/24
A1	D1 - UNDERGROUND UTILITIES					
Drawing Suitability						
APPROVED - PUBLISHED						

AtkinsRéalis
 Chadwick House
 Birchwood Park
 Warrington
 WA3 6AE
 Tel: +44 (0)1925 238000
 Fax: +44 (0)1925 238500
 Copyright © AtkinsRéalis (2023) www.AtkinsRealis.com



Project Title
 EAST LANCASHIRE LUF BUS STOP ACCESSIBILITY IMPROVEMENTS
 Drawing Title
 BLACKBURN ROAD - RISING BRIDGE
 BUS STOP ID: 2500IMG1738
 DETAILED DESIGN

Drawing Number		Originator	Functional Breakdown	
Original	A3	LCCBSA	- ATK	- HGN -
Size:	1:125	ZZ	- DR	- CH - 000013
Spatial Breakdown		Form	Discipline	Number
Project Ref. No:	5226062	Sheet:	1 of 1	Rev: C02

TRO:			
From	To	Type	Remark
NO CHANGE			

This map is based on Ordnance Survey material with the permission of Ordnance Survey on behalf of the Controller of Her Majesty's Stationery Office. © Crown copyright. Unauthorised reproduction infringes Crown copyright and may lead to prosecution or civil proceedings. All rights reserved. Lancashire County Council Licence AC000850590, 2023.

Scale 1:125



SAFETY, HEALTH AND ENVIRONMENTAL INFORMATION

In addition to the hazards/risks normally associated with the types of work detailed on this drawing, note the following significant residual risks (Reference shall also be made to the design hazard log).

Construction
C1 - UNDERGROUND UTILITIES

Maintenance / Cleaning
M1 - UNDERGROUND UTILITIES

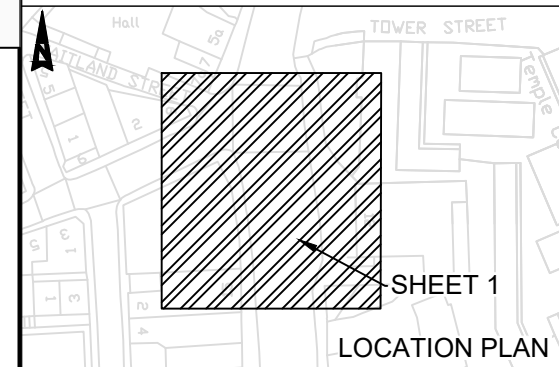
Use
NONE

Decommissioning / Demolition
D1 - UNDERGROUND UTILITIES

RM1			
TYPE	CLEARWAY (DIAG 1025.1)		
WIDTH (mm)	200	COLOUR	AMBER
MARK (mm)	CONTINUOUS	GAP (mm)	NONE
TOTAL LENGTH (m)	41		
TYPE	DASHED LINE (DIAG 1025.1)		
WIDTH (mm)	200	COLOUR	AMBER
MARK (mm)	1000	GAP (mm)	1000
TOTAL LENGTH (m)	39		
TYPE	BUS STOP LETTERS (DIAG 1025.1)		
NO. OF LETTERS	7		

- KEY:
- 400x400 TACTILE PAVING
 - 200x100 TACTILE PAVING
 - BULLNOSE KERB 160 FACE
 - BULLNOSE KERB 160 TO 130 FACE
 - TRANSITION KERB 130 TO 100 FACE
 - FEEDER PILLAR
 - BUS STOP MARKINGS
 - HSE HAZARD TRIANGLE FOR MORE INFORMATION REFER TO SHE BOX

- NOTES:
- REFER TO LCC STANDARD BUS STOP DETAIL DRAWING FOR DIMENSIONS OF THE TACTILE PAVING, KERB DIMENSIONS (TYPES) AND KERB HEIGHTS
 - REFER TO DRAWING LCBSA-ATK-HGN-ZZ-DR-CH-000045 FOR THE UTILITIES KEY
 - SHELTER TO BE REPLACED - BOARDING PLACE TO REMAIN THE SAME POSITION IN BUS STOP
 - MATERIALS USED ON THE LAYOUT DRAWINGS ARE TO MATCH EXISTING MATERIALS ON SITE



Description

Status	Rev	Drawn	Chk'd	Rev'd	Auth	Issue Date

Description

Status	Rev	Drawn	Chk'd	Rev'd	Auth	Issue Date

Description
FIRST ISSUE

Status	Rev	Drawn	Chk'd	Rev'd	Auth	Issue Date
A1	C01	KW	HK	JK	JK	14/02/24

Description
SECOND ISSUE

Status	Rev	Drawn	Chk'd	Rev'd	Auth	Issue Date
A1	C02	KW	HK	JK	JK	24/04/24

Status	Drawing Suitability
A1	APPROVED - PUBLISHED



Chadwick House
Birchwood Park
Warrington
WA3 6AE

Tel: +44 (0)1925 238000
Fax: +44 (0)1925 238500

Copyright © AtkinsRéalis (2023) www.AtkinsRealis.com

Client



Project Title
EAST LANCASHIRE LUF BUS STOP
ACCESSIBILITY IMPROVEMENTS

Drawing Title
MARKET STREET - BACUP
BUS STOP ID: 25001940
DETAILED DESIGN

Drawing Number
Project Originator | Functional Breakdown
LCCBSA - ATK - HGN -
ZZ - DR - CH - 000029
Spatial Breakdown | Form | Discipline | Number

Original Scale: Project Ref. No: Sheet: Rev:
Size: A3 1:125 5226062 1 of 1 C02

A681 MARKET STREET

BUS STOP

RM1

RM1

C1/M1/D1

APPROXIMATE LOCATION
OF EXISTING BUS SHELTER

TRO:

From	To	Type	Remark
Start of existing taxi rank	End of existing taxi rank	Clearway + Bus box	Remove existing taxi rank markings and replace with clearway + bus box markings

This map is based on Ordnance Survey material with the permission of Ordnance Survey on behalf of the Controller of Her Majesty's Stationery Office. © Crown copyright. Unauthorised reproduction infringes Crown copyright and may lead to prosecution or civil proceedings. All rights reserved. Lancashire County Council Licence AC0000850590, 2023.

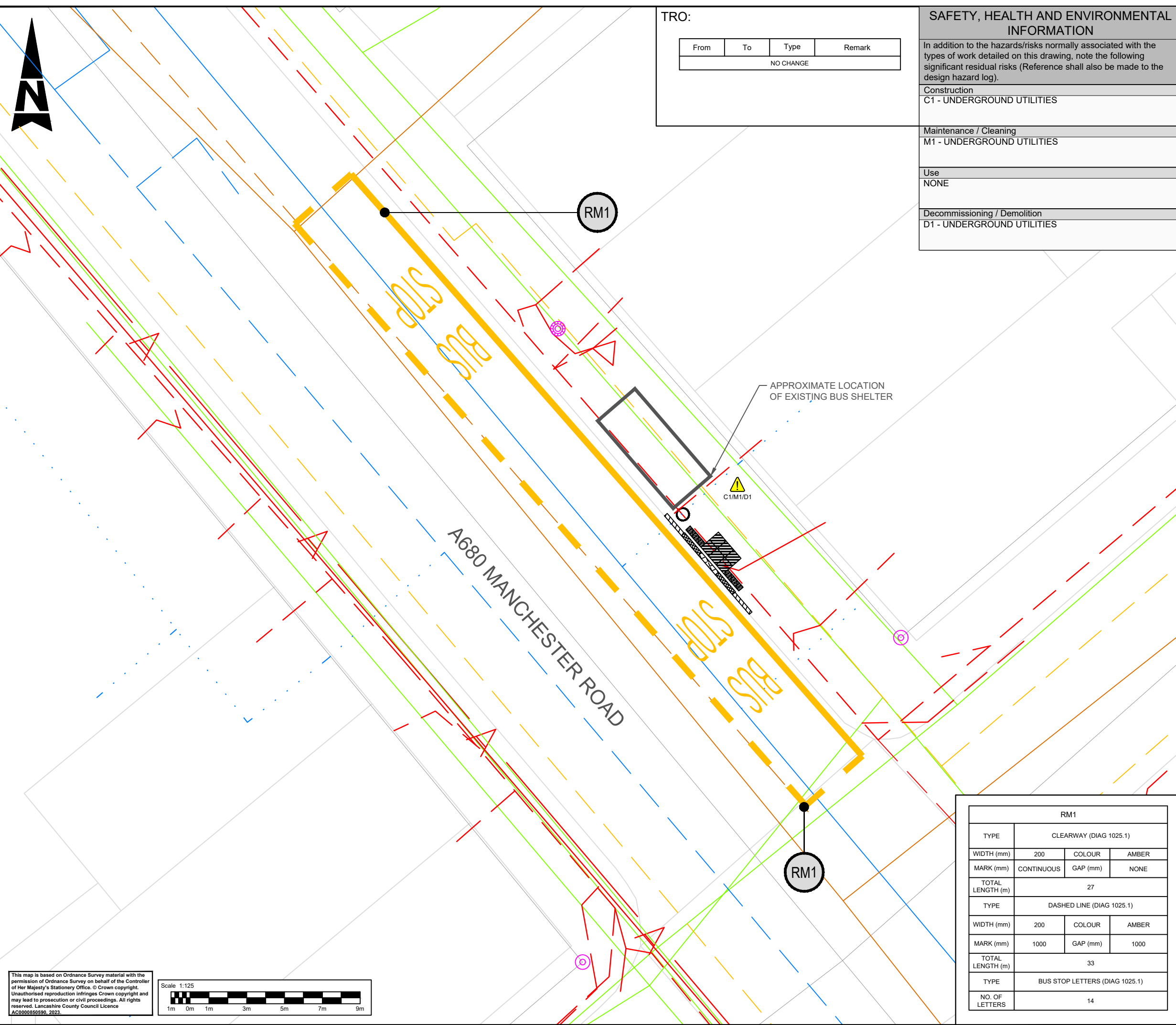
Scale 1:125



Millimetres
100
10
0
DO NOT SCALE

DO NOT SCALE

Millimetres
100
10
0



TRO:

From	To	Type	Remark
NO CHANGE			

SAFETY, HEALTH AND ENVIRONMENTAL INFORMATION

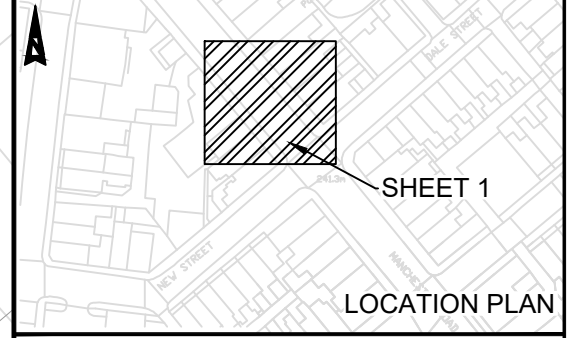
In addition to the hazards/risks normally associated with the types of work detailed on this drawing, note the following significant residual risks (Reference shall also be made to the design hazard log).

Construction	C1 - UNDERGROUND UTILITIES
Maintenance / Cleaning	M1 - UNDERGROUND UTILITIES
Use	NONE
Decommissioning / Demolition	D1 - UNDERGROUND UTILITIES

KEY:

	BUS STOP FLAG
	400x400 TACTILE PAVING
	200x100 TACTILE PAVING
	BULLNOSE KERB 160 FACE
	BULLNOSE KERB 160 TO 130 FACE
	TRANSITION KERB 130 TO 100 FACE
	FEEDER PILLAR
	BUS STOP MARKINGS
	HSE HAZARD TRIANGLE FOR MORE INFORMATION REFER TO SHE BOX

NOTES:
 1. REFER TO LCC STANDARD BUS STOP DETAIL DRAWING FOR DIMENSIONS OF THE TACTILE PAVING, KERB DIMENSIONS (TYPES) AND KERB HEIGHTS
 2. REFER TO DRAWING LCCBSA-ATK-HGN-ZZ-DR-CH-000045 FOR THE UTILITIES KEY
 3. NO FEEDER PILLAR PRESENT - POWER TO BE SUPPLIED BY LIGHTING COLUMN LEFT OF BUS STOP
 4. INSTALL POWERED POLE FOR RTI DISPLAY
 5. MATERIALS USED ON THE LAYOUT DRAWINGS ARE TO MATCH EXISTING MATERIALS ON SITE



Description						
Status	Rev	Drawn	Chk'd	Rev'd	Auth	Issue Date
Description						
Status	Rev	Drawn	Chk'd	Rev'd	Auth	Issue Date
Description						
FIRST ISSUE						
A1	C01	KW	HK	JK	JK	14/02/24
Description						
SECOND ISSUE						
A1	C02	KW	HK	JK	JK	24/04/24
Status	Drawing Suitability					
A1	APPROVED - PUBLISHED					

AtkinsRéalis Chadwick House
 Birchwood Park
 Warrington
 WA3 6AE
 Tel: +44 (0)1925 238000
 Fax: +44 (0)1925 238500
 Copyright © AtkinsRéalis (2023) www.AtkinsRealis.com



Project Title
 EAST LANCASTHIRE LUF BUS STOP ACCESSIBILITY IMPROVEMENTS

Drawing Title
 MANCHESTER ROAD - HASLINGDEN
 BUS STOP ID: 2500LAA00234
 DETAILED DESIGN

Drawing Number	Project			Originator	Functional Breakdown
A3	LCCBSA - ATK - HGN - ZZ - DR - CH - 000035				
Spatial Breakdown			Form	Discipline	Number
Original Size:	A3	Scale:	1:125	Project Ref. No:	5226062
		Sheet:	1 of 1	Rev:	C02

RM1			
CLEARWAY (DIAG 1025.1)			
WIDTH (mm)	200	COLOUR	AMBER
MARK (mm)	CONTINUOUS	GAP (mm)	NONE
TOTAL LENGTH (m)	27		
DASHED LINE (DIAG 1025.1)			
WIDTH (mm)	200	COLOUR	AMBER
MARK (mm)	1000	GAP (mm)	1000
TOTAL LENGTH (m)	33		
BUS STOP LETTERS (DIAG 1025.1)			
NO. OF LETTERS	14		

This map is based on Ordnance Survey material with the permission of Ordnance Survey on behalf of the Controller of Her Majesty's Stationery Office. © Crown copyright. Unauthorised reproduction infringes Crown copyright and may lead to prosecution or civil proceedings. All rights reserved. Lancashire County Council Licence AC0000850590, 2023.

Scale 1:125

RM2			
TYPE	H BAR (ACCESS PROTECTION MARKING) DIAG 1026.1		
WIDTH (mm)	100	COLOUR	WHITE
MARK (mm)	CONTINUOUS	GAP (mm)	NONE
TOTAL LENGTH (m)	14		

RM1			
TYPE	CLEARWAY (DIAG 1025.1)		
WIDTH (mm)	200	COLOUR	AMBER
MARK (mm)	CONTINUOUS	GAP (mm)	NONE
TOTAL LENGTH (m)	53		
TYPE	DASHED LINE (DIAG 1025.1)		
WIDTH (mm)	200	COLOUR	AMBER
MARK (mm)	1000	GAP (mm)	1000
TOTAL LENGTH (m)	73		
TYPE	BUS STOP LETTERS (DIAG 1025.1)		
NO. OF LETTERS	7		

SAFETY, HEALTH AND ENVIRONMENTAL INFORMATION

In addition to the hazards/risks normally associated with the types of work detailed on this drawing, note the following significant residual risks (Reference shall also be made to the design hazard log).

Construction
C1 - UNDERGROUND UTILITIES

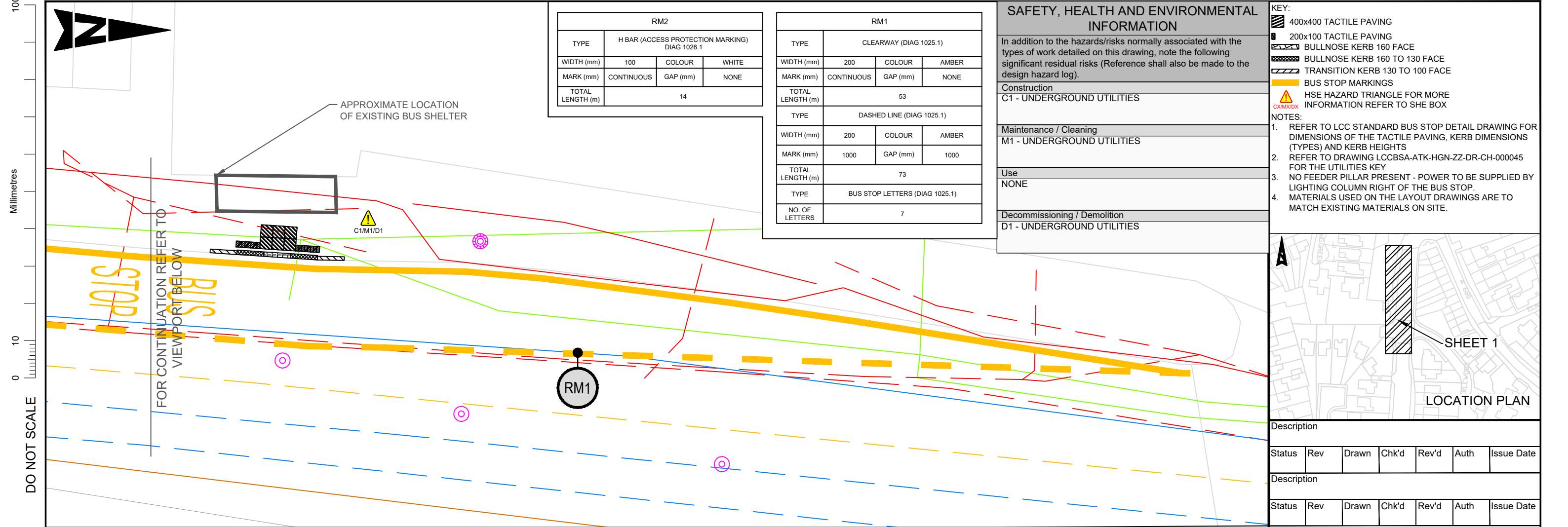
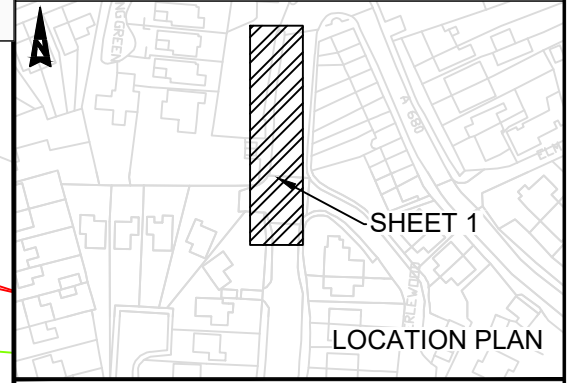
Maintenance / Cleaning
M1 - UNDERGROUND UTILITIES

Use
NONE

Decommissioning / Demolition
D1 - UNDERGROUND UTILITIES

- KEY:**
- 400x400 TACTILE PAVING
 - 200x100 TACTILE PAVING
 - BULLNOSE KERB 160 FACE
 - BULLNOSE KERB 160 TO 130 FACE
 - TRANSITION KERB 130 TO 100 FACE
 - BUS STOP MARKINGS
 - HSE HAZARD TRIANGLE FOR MORE INFORMATION REFER TO SHE BOX

- NOTES:**
- REFER TO LCC STANDARD BUS STOP DETAIL DRAWING FOR DIMENSIONS OF THE TACTILE PAVING, KERB DIMENSIONS (TYPES) AND KERB HEIGHTS
 - REFER TO DRAWING LCCBSA-ATK-HGN-ZZ-DR-CH-000045 FOR THE UTILITIES KEY
 - NO FEEDER PILLAR PRESENT - POWER TO BE SUPPLIED BY LIGHTING COLUMN RIGHT OF THE BUS STOP.
 - MATERIALS USED ON THE LAYOUT DRAWINGS ARE TO MATCH EXISTING MATERIALS ON SITE.



Millimetres

100

10

0

DO NOT SCALE

Description	Status	Rev	Drawn	Chk'd	Rev'd	Auth	Issue Date

Description	Status	Rev	Drawn	Chk'd	Rev'd	Auth	Issue Date

Description	Status	Rev	Drawn	Chk'd	Rev'd	Auth	Issue Date
FIRST ISSUE	A1	C01	KW	HK	JK	JK	14/02/24

Description	Status	Rev	Drawn	Chk'd	Rev'd	Auth	Issue Date
SECOND ISSUE	A1	C02	KW	HK	JK	JK	24/04/24

Status	Description
A1	Drawing Suitability APPROVED - PUBLISHED

AtkinsRéalis

Chadwick House
Birchwood Park
Warrington
WA3 6AE

Tel: +44 (0)1925 238000
Fax: +44 (0)1925 238500

Copyright © AtkinsRéalis (2023) www.AtkinsRealis.com

Lancashire County Council

Project Title
EAST LANCASHIRE LUF BUS STOP ACCESSIBILITY IMPROVEMENTS

Drawing Title
BURY ROAD - EDENFIELD
BUS STOP ID: 25001360
DETAILED DESIGN

Drawing Number	Project	Originator	Functional Breakdown
	LCCBSA	- ATK	- HGN -
		ZZ	- DR - CH - 000036
Spatial Breakdown	Form	Discipline	Number
Original Size: A3	Scale: 1:125	Project Ref. No: 5226062	Sheet: 1 of 1
			Rev: C02

TRO:

From	To	Type	Remark
Start of layby	End of layby	Clearway	New marking

This map is based on Ordnance Survey material with the permission of Ordnance Survey on behalf of the Controller of Her Majesty's Stationery Office. © Crown copyright. Unauthorised reproduction infringes Crown copyright and may lead to prosecution or civil proceedings. All rights reserved. Lancashire County Council Licence AC0000850590, 2023.

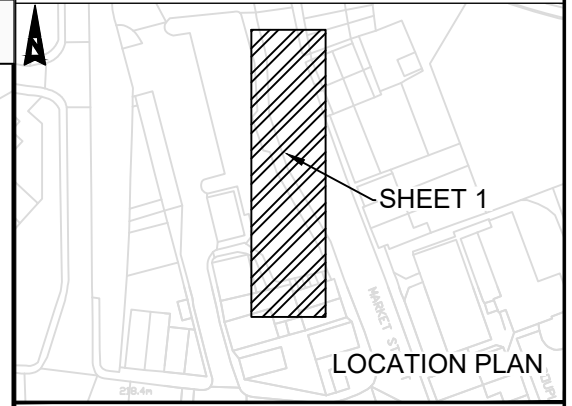


100
Millimetres
10
0
DO NOT SCALE

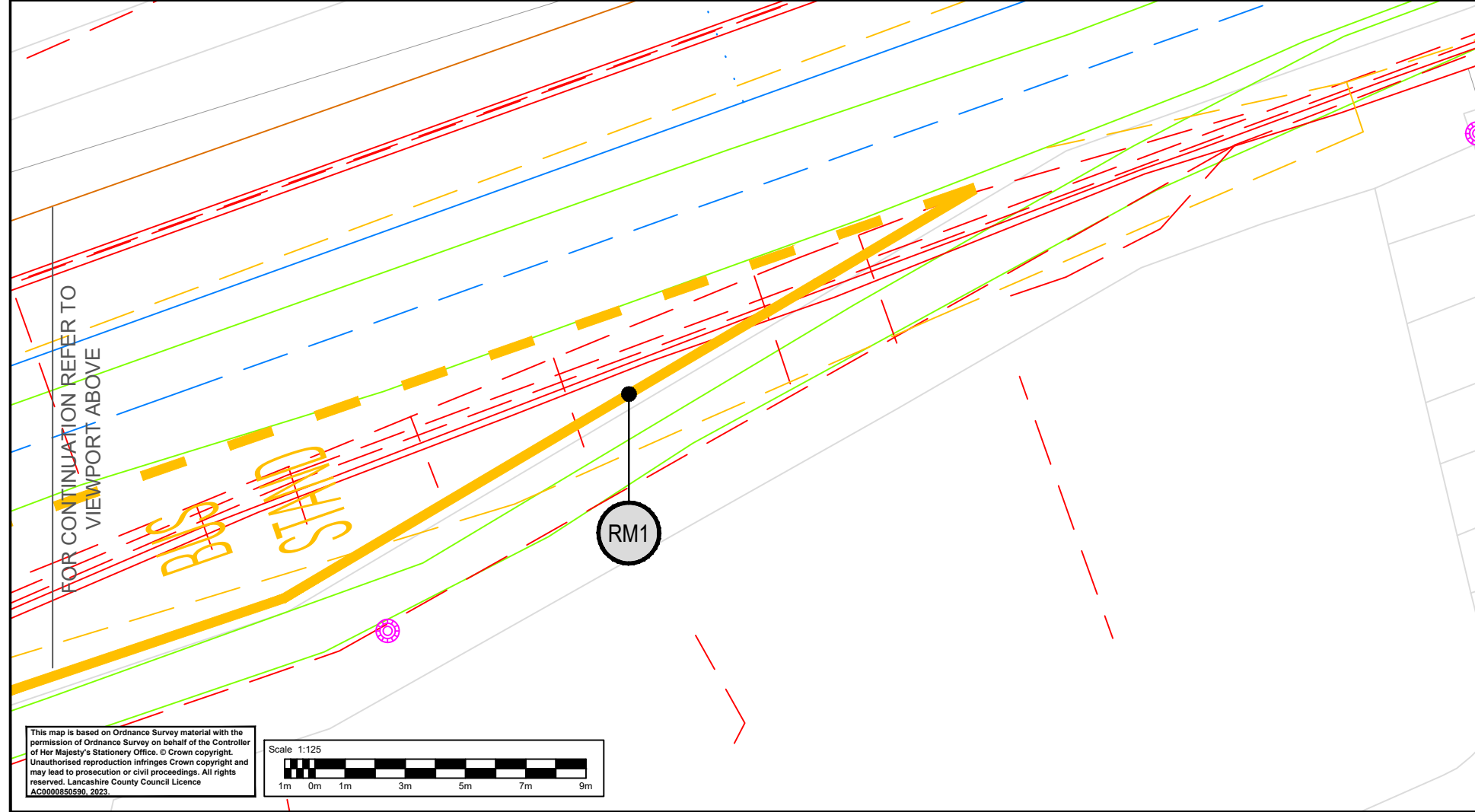


SAFETY, HEALTH AND ENVIRONMENTAL INFORMATION	
In addition to the hazards/risks normally associated with the types of work detailed on this drawing, note the following significant residual risks (Reference shall also be made to the design hazard log).	
Construction	C1 - UNDERGROUND UTILITIES
Maintenance / Cleaning	M1 - UNDERGROUND UTILITIES
Use	NONE
Decommissioning / Demolition	D1 - UNDERGROUND UTILITIES

- KEY:
- FEEDER PILLAR
 - BUS STOP MARKINGS
 - HSE HAZARD TRIANGLE FOR MORE INFORMATION REFER TO SHE BOX
- NOTES:
- REFER TO LCC STANDARD BUS STOP DETAIL DRAWING FOR DIMENSIONS OF THE TACTILE PAVING, KERB DIMENSIONS (TYPES) AND KERB HEIGHTS
 - REFER TO DRAWING LCCBSA-ATK-HGN-ZZ-DR-CH-000045 FOR THE UTILITIES KEY
 - REFRESH CLEARWAY + BUS STOP MARKINGS ONLY
 - INSTALL NEW SHELTER WITH RTI
 - MATERIALS USED ON THE LAYOUT DRAWINGS ARE TO MATCH EXISTING MATERIALS ON SITE



Description						
Status	Rev	Drawn	Chk'd	Rev'd	Auth	Issue Date
Description FIRST ISSUE						
A1	C01	KW	HK	JK	JK	14/02/24
Description SECOND ISSUE						
A1	C02	KW	HK	JK	JK	24/04/24
A1	Drawing Suitability APPROVED - PUBLISHED					



RM1			
CLEARWAY (DIAG 1025.1)			
TYPE	WIDTH (mm)	COLOUR	AMBER
MARK (mm)	CONTINUOUS	GAP (mm)	NONE
TOTAL LENGTH (m)	43		
DASHED LINE (DIAG 1025.1)			
TYPE	WIDTH (mm)	COLOUR	AMBER
MARK (mm)	1000	GAP (mm)	1000
TOTAL LENGTH (m)	41		
BUS STOP LETTERS (DIAG 1025.1)			
NO. OF LETTERS	8		

TRO:

From	To	Type	Remark
NO CHANGE			

This map is based on Ordnance Survey material with the permission of Ordnance Survey on behalf of the Controller of Her Majesty's Stationery Office. © Crown copyright. Unauthorised reproduction infringes Crown copyright and may lead to prosecution or civil proceedings. All rights reserved. Lancashire County Council Licence AC0000850590, 2023.

Scale 1:125

AtkinsRéalis
Chadwick House
Birchwood Park
Warrington
WA3 6AE
Tel: +44 (0)1925 238000
Fax: +44 (0)1925 238500
Copyright © AtkinsRéalis (2023) www.AtkinsRealis.com

Client
Lancashire County Council

Project Title
EAST LANCASHIRE LUF BUS STOP ACCESSIBILITY IMPROVEMENTS
Drawing Title
MARKET STREET - WHITWORTH
BUS STOP ID: 2500DCL5629
DETAILED DESIGN

Drawing Number
Project Originator Functional Breakdown
LCCBSA - ATK - HGN - ZZ - DR - CH - 000039
Spatial Breakdown Form Discipline Number
Original Scale: Project Ref. No: Sheet: Rev:
Size: A3 1:125 5226062 1 of 1 C02

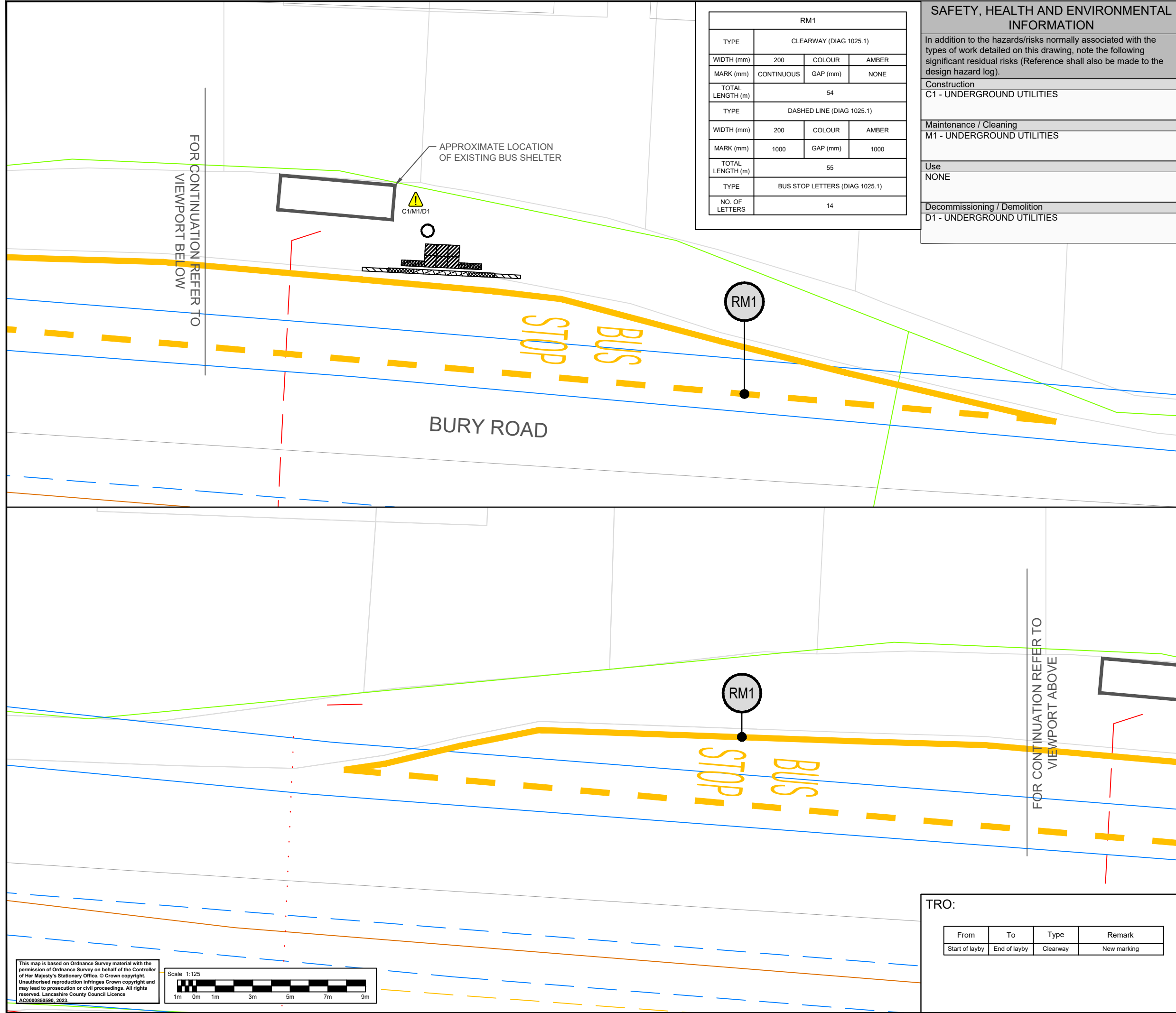
Millimetres

100

10

0

DO NOT SCALE



RM1			
CLEARWAY (DIAG 1025.1)			
WIDTH (mm)	200	COLOUR	AMBER
MARK (mm)	CONTINUOUS	GAP (mm)	NONE
TOTAL LENGTH (m)	54		
DASHED LINE (DIAG 1025.1)			
WIDTH (mm)	200	COLOUR	AMBER
MARK (mm)	1000	GAP (mm)	1000
TOTAL LENGTH (m)	55		
TYPE	BUS STOP LETTERS (DIAG 1025.1)		
NO. OF LETTERS	14		

SAFETY, HEALTH AND ENVIRONMENTAL INFORMATION	
In addition to the hazards/risks normally associated with the types of work detailed on this drawing, note the following significant residual risks (Reference shall also be made to the design hazard log).	
Construction	C1 - UNDERGROUND UTILITIES
Maintenance / Cleaning	M1 - UNDERGROUND UTILITIES
Use	NONE
Decommissioning / Demolition	D1 - UNDERGROUND UTILITIES

KEY:

- BUS STOP FLAG
- 400x400 TACTILE PAVING
- 200x100 TACTILE PAVING
- BULLNOSE KERB 160 FACE
- BULLNOSE KERB 160 TO 130 FACE
- TRANSITION KERB 130 TO 100 FACE
- BUS STOP MARKINGS
- HSE HAZARD TRIANGLE FOR MORE INFORMATION REFER TO SHE BOX

NOTES:

- REFER TO LCC STANDARD BUS STOP DETAIL DRAWING FOR DIMENSIONS OF THE TACTILE PAVING, KERB DIMENSIONS (TYPES) AND KERB HEIGHTS
- REFER TO DRAWING LCCBSA-ATK-HGN-ZZ-DR-CH-000045 FOR THE UTILITIES KEY
- NO FEEDER PILLAR PRESENT - CLOSEST POWER SOURCE TO BE SEEN IS LIGHTING COLUMN ACROSS THE ROAD
- MATERIALS USED ON THE LAYOUT DRAWINGS ARE TO MATCH EXISTING MATERIALS ON SITE



Description						
Status	Rev	Drawn	Chk'd	Rev'd	Auth	Issue Date
Description						
A1	C01	KW	HK	JK	JK	14/02/24
Description						
SECOND ISSUE						
A1	C02	KW	HK	JK	JK	24/04/24
A1	Drawing Suitability APPROVED - PUBLISHED					

AtkinsRéalis

Chadwick House
Birchwood Park
Warrington
WA3 6AE

Tel: +44 (0)1925 238000
Fax: +44 (0)1925 238500

Copyright © AtkinsRéalis (2023) www.AtkinsRealis.com

Client

Lancashire County Council

Project Title
EAST LANCASHIRE LUF BUS STOP ACCESSIBILITY IMPROVEMENTS

Drawing Title
BURY ROAD - EDENFIELD
BUS STOP ID: 2500LAA07209
DETAILED DESIGN

Drawing Number	Project	Originator	Functional Breakdown
A3	LCCBSA	ATK	HGN - ZZ - DR - CH - 000037
Original Size:	Scale:	Project Ref. No:	Sheet: Rev:
A3	1:125	5226062	1 of 1 C02

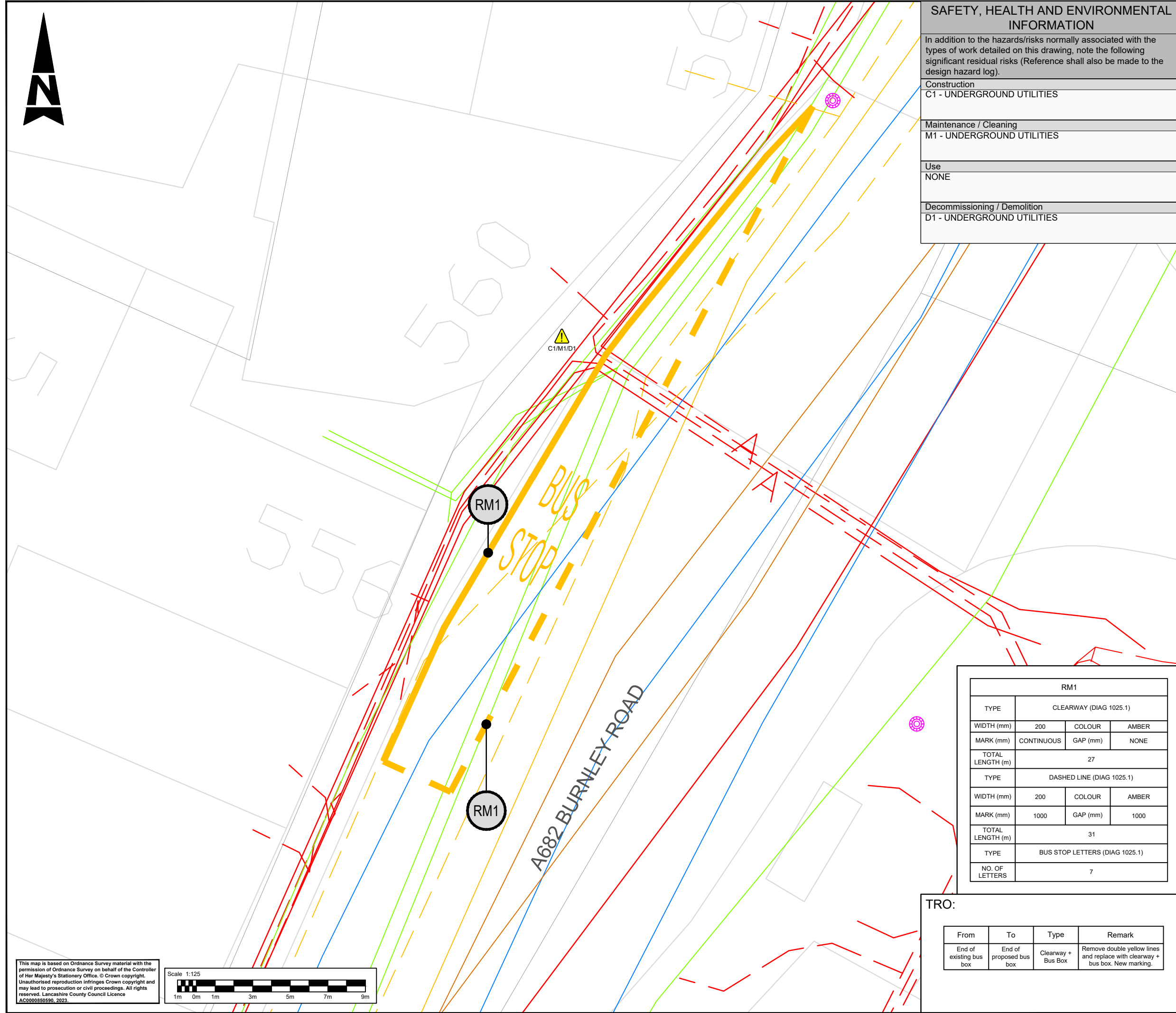
TRO:

From	To	Type	Remark
Start of layby	End of layby	Clearway	New marking

This map is based on Ordnance Survey material with the permission of Ordnance Survey on behalf of the Controller of Her Majesty's Stationery Office. © Crown copyright. Unauthorised reproduction infringes Crown copyright and may lead to prosecution or civil proceedings. All rights reserved. Lancashire County Council Licence AC000850590, 2023.

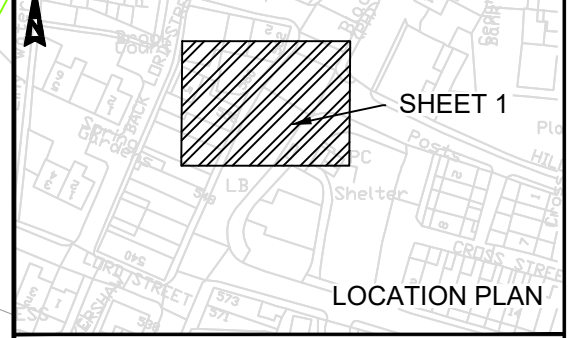
Scale 1:125

Millimetres
100
10
0
DO NOT SCALE



SAFETY, HEALTH AND ENVIRONMENTAL INFORMATION	
In addition to the hazards/risks normally associated with the types of work detailed on this drawing, note the following significant residual risks (Reference shall also be made to the design hazard log).	
Construction	C1 - UNDERGROUND UTILITIES
Maintenance / Cleaning	M1 - UNDERGROUND UTILITIES
Use	NONE
Decommissioning / Demolition	D1 - UNDERGROUND UTILITIES

- KEY:**
- BUS STOP MARKINGS
 - ▲ HSE HAZARD TRIANGLE FOR MORE INFORMATION REFER TO SHE BOX
- NOTES:**
1. REFER TO LCC STANDARD BUS STOP DETAIL DRAWING FOR DIMENSIONS OF THE TACTILE PAVING, KERB DIMENSIONS (TYPES) AND KERB HEIGHTS
 2. REFER TO DRAWING LCCBSA-ATK-HGN-ZZ-DR-CH-000045 FOR THE UTILITIES KEY
 3. POWERED POLE TO BE INSTALLED
 4. NO FEEDER PILLAR PRESENT - POWER TO BE SUPPLIED BY BELLISHA BEACON RIGHT OF BUS STOP
 5. MATERIALS USED ON THE LAYOUT DRAWINGS ARE TO MATCH EXISTING MATERIALS ON SITE



Description						
Status	Rev	Drawn	Chk'd	Rev'd	Auth	Issue Date
Description						
Status	Rev	Drawn	Chk'd	Rev'd	Auth	Issue Date
Description						
Status	Rev	Drawn	Chk'd	Rev'd	Auth	Issue Date
Description						
FIRST ISSUE						
Status	Rev	Drawn	Chk'd	Rev'd	Auth	Issue Date
A1	C01	KW	HK	JK	JK	24/04/24
Status	Drawing Suitability					
A1	APPROVED - PUBLISHED					

RM1			
CLEARWAY (DIAG 1025.1)			
TYPE	WIDTH (mm)	COLOUR	AMBER
MARK (mm)	200	GAP (mm)	NONE
TOTAL LENGTH (m)	27		
DASHED LINE (DIAG 1025.1)			
TYPE	WIDTH (mm)	COLOUR	AMBER
MARK (mm)	1000	GAP (mm)	1000
TOTAL LENGTH (m)	31		
BUS STOP LETTERS (DIAG 1025.1)			
NO. OF LETTERS	7		

TRO:

From	To	Type	Remark
End of existing bus box	End of proposed bus box	Clearway + Bus Box	Remove double yellow lines and replace with clearway + bus box. New marking.

This map is based on Ordnance Survey material with the permission of Ordnance Survey on behalf of the Controller of Her Majesty's Stationery Office. © Crown copyright. Unauthorised reproduction infringes Crown copyright and may lead to prosecution or civil proceedings. All rights reserved. Lancashire County Council Licence AC0000850590, 2023.



AtkinsRéalis

Chadwick House
Birchwood Park
Warrington
WA3 6AE

Tel: +44 (0)1925 238000
Fax: +44 (0)1925 238500

Copyright © AtkinsRéalis (2023) www.AtkinsRealis.com

Client

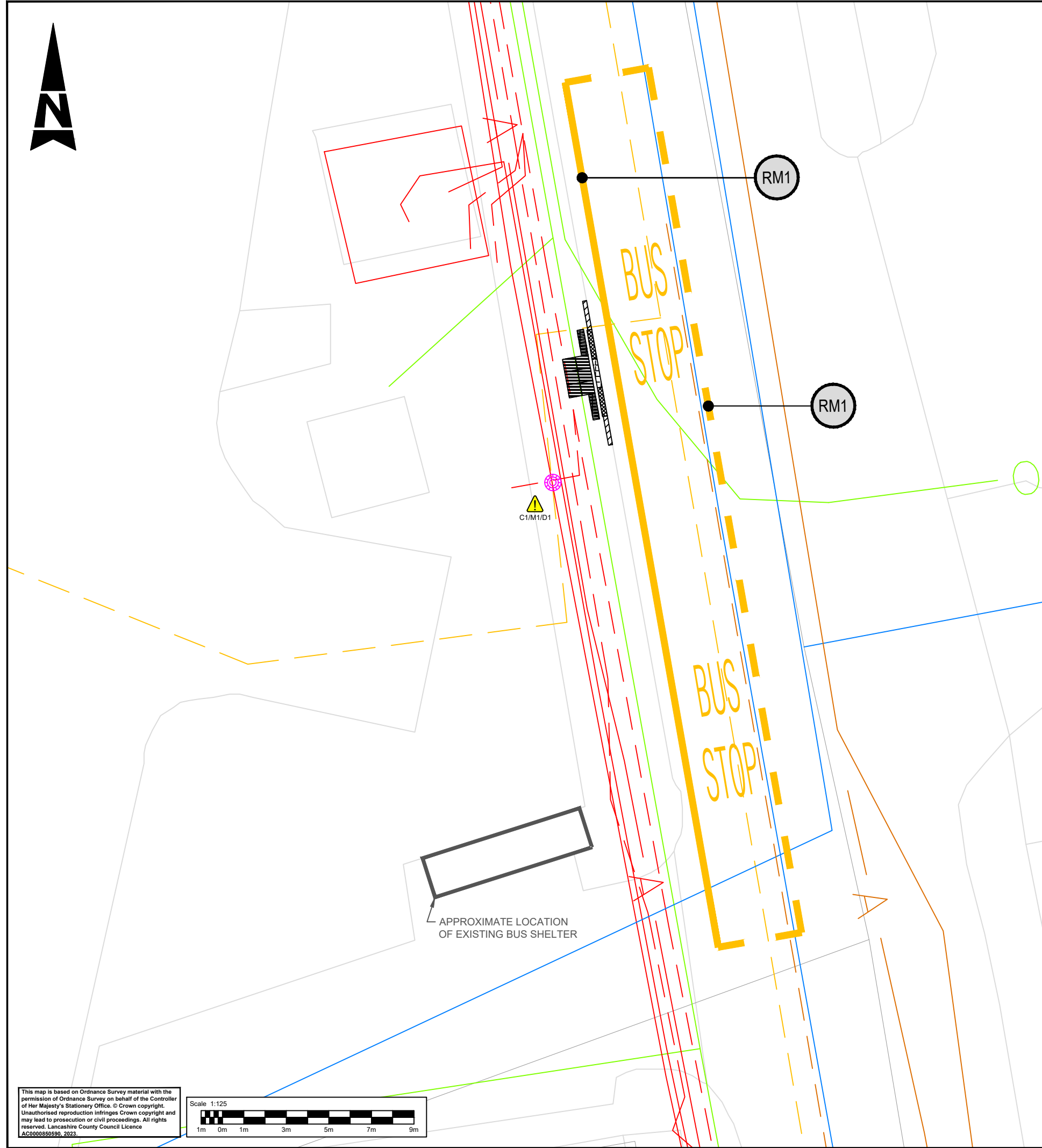
Lancashire County Council

Project Title
EAST LANCASHIRE LUF BUS STOP ACCESSIBILITY IMPROVEMENTS

Drawing Title
BURNLEY ROAD - CRAWSHAWBOOTH
BUS STOP ID: 2500IMG2890
DETAILED DESIGN

Drawing Number	Project	Originator	Functional Breakdown
	LCCBSA	- ATK	- HGN -
Spatial Breakdown	ZZ	- DR	- CH - 000040
Original Size:	A3	Scale:	1:125
Project Ref. No:	5226062	Sheet:	1 of 1
Rev:	C01		

100
Millimetres
10
0
DO NOT SCALE



SAFETY, HEALTH AND ENVIRONMENTAL INFORMATION

In addition to the hazards/risks normally associated with the types of work detailed on this drawing, note the following significant residual risks (Reference shall also be made to the design hazard log).

Construction
C1 - UNDERGROUND UTILITIES

Maintenance / Cleaning
M1 - UNDERGROUND UTILITIES

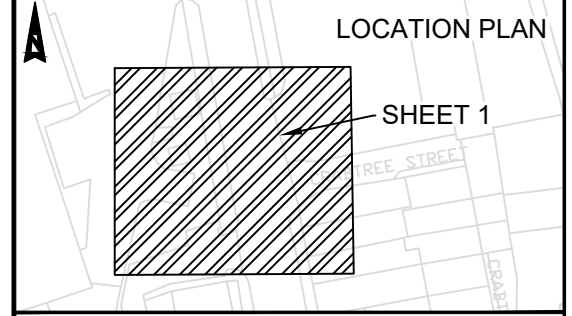
Use
NONE

Decommissioning / Demolition
D1 - UNDERGROUND UTILITIES

RM1			
TYPE	CLEARWAY (DIAG 1025.1)		
WIDTH (mm)	200	COLOUR	AMBER
MARK (mm)	CONTINUOUS	GAP (mm)	NONE
TOTAL LENGTH (m)	27		
TYPE	DASHED LINE (DIAG 1025.1)		
WIDTH (mm)	200	COLOUR	AMBER
MARK (mm)	1000	GAP (mm)	1000
TOTAL LENGTH (m)	33		
TYPE	BUS STOP LETTERS (DIAG 1025.1)		
NO. OF LETTERS	14		

- KEY:**
- BUS STOP FLAG
 - 400x400 TACTILE PAVING
 - 200x100 TACTILE PAVING
 - BULLNOSE KERB 160 FACE
 - BULLNOSE KERB 160 TO 130 FACE
 - TRANSITION KERB 130 TO 100 FACE
 - BUS STOP MARKINGS
 - HSE HAZARD TRIANGLE FOR MORE INFORMATION REFER TO SHE BOX

- NOTES:**
1. REFER TO LCC STANDARD BUS STOP DETAIL DRAWING FOR DIMENSIONS OF THE TACTILE PAVING, KERB DIMENSIONS (TYPES) AND KERB HEIGHTS
 2. REFER TO DRAWING LCCBSA-ATK-HGN-ZZ-DR-CH-000045 FOR THE UTILITIES KEY
 3. NEW SHELTER TO BE INSTALLED AND MOVED IN FRONT OF RAILINGS
 4. NO FEEDER PILLAR PRESENT - POWER TO BE SUPPLIED BY LIGHTING COLUMN RIGHT OF THE BUS STOP
 5. MATERIALS USED ON THE LAYOUT DRAWINGS ARE TO MATCH EXISTING MATERIALS ON SITE



Description

Status	Rev	Drawn	Chk'd	Rev'd	Auth	Issue Date

Description

Status	Rev	Drawn	Chk'd	Rev'd	Auth	Issue Date

Description

Status	Rev	Drawn	Chk'd	Rev'd	Auth	Issue Date
A1	C01	KW	HK	JK	JK	14/02/24

Description

Status	Rev	Drawn	Chk'd	Rev'd	Auth	Issue Date
A1	C02	KW	HK	JK	JK	24/04/24

Status

A1 Drawing Suitability

APPROVED - PUBLISHED

AtkinsRéalis Chadwick House
Birchwood Park
Warrington
WA3 6AE

Tel: +44 (0)1925 238000
Fax: +44 (0)1925 238500

Copyright © AtkinsRéalis (2023) www.AtkinsRealis.com

Client

Lancashire County Council

Project Title
EAST LANCASHIRE LUF BUS STOP ACCESSIBILITY IMPROVEMENTS

Drawing Title
BURNLEY ROAD - WHITEWELL BOTTOM
BUS STOP ID: 2500LAA7101
DETAILED DESIGN

Drawing Number
Project Originator Functional Breakdown
LCCBSA - ATK - HGN -
ZZ - DR - CH - 000041

Spatial Breakdown
Form Discipline Number

Original A3 **Scale:** 1:125 **Project Ref. No:** 5226062 **Sheet:** 1 of 1 **Rev:** C02

TRO:

From	To	Type	Remark
Access Road	Electrical substation	Clearway + Bus Stop Markings	New markings

This map is based on Ordnance Survey material with the permission of Ordnance Survey on behalf of the Controller of Her Majesty's Stationery Office. © Crown copyright. Unauthorised reproduction infringes Crown copyright and may lead to prosecution or civil proceedings. All rights reserved. Lancashire County Council Licence AC0000850590, 2023.



100
Millimetres

10
0

DO NOT SCALE

UTILITIES KEY:

- LCC, ELECTRIC STREET LIGHT
- LCC, ELECTRIC STREET FURNITURE
- LCC, GULLY
- GTC, SERVICE, PROPOSED (E)
- GTC, SERVICE (E)
- GTC, LOW VOLTAGE
- NORTHERN POWERGRID, LOW VOLTAGE
- NORTHERN POWERGRID, LOW VOLTAGE SERVICE
- NORTHERN POWERGRID, LOW VOLTAGE LOGICAL CONNECTION
- NORTHERN POWERGRID, LOW VOLTAGE SERVICE ASSUMED ROUTE
- NORTHERN POWERGRID, LEFT IN SITU
- NORTHERN POWERGRID, HIGH VOLTAGE, 11kV
- NORTHERN POWERGRID, DUCT
- NORTHERN POWERGRID SUBSTATION
- ENERGY ASSET NETWORKS, LOW VOLTAGE
- ENERGY ASSET NETWORKS, EARTH
- LAST MILE, LOW VOLTAGE
- ELECTRICITY NORTH WEST, LOW VOLTAGE
- ELECTRICITY NORTH WEST, LOW VOLTAGE, ABANDONED
- ELECTRICITY NORTH WEST, HIGH VOLTAGE, 6kV
- ELECTRICITY NORTH WEST, HIGH VOLTAGE, 6kV, ABANDONED
- ELECTRICITY NORTH WEST, HIGH VOLTAGE, 6.6kV
- ELECTRICITY NORTH WEST, HIGH VOLTAGE, 6.6kV, OVERHEAD
- ELECTRICITY NORTH WEST, HIGH VOLTAGE, 6.6kV, ABANDONED
- ELECTRICITY NORTH WEST, HIGH VOLTAGE, 33kV
- ELECTRICITY NORTH WEST, HIGH VOLTAGE, 33kV, ABANDONED
- ELECTRICITY NORTH WEST, HIGH VOLTAGE, 11kV
- ELECTRICITY NORTH WEST, HIGH VOLTAGE, 11kV, ABANDONED
- ELECTRICITY NORTH WEST, HIGH VOLTAGE, 11kV, OVERHEAD
- ELECTRICITY NORTH WEST, HIGH VOLTAGE, 132kV OVERHEAD
- ELECTRICITY NORTH WEST, EXTRA HIGH VOLTAGE, 132kV
- ELECTRICITY NORTH WEST, EARTH
- ESP UTILITIES GROUP, LOW VOLTAGE
- ELECTRICITY NORTH WEST, SUBSTATION
- LAST MILE, LOW PRESSURE
- ESP UTILITIES GROUP, LOW PRESSURE
- GTC, SERVICE, PROPOSED (G)
- GTC, SERVICE (G)
- GTC, LOW PRESSURE, PROPOSED
- GTC, LOW PRESSURE
- ENERGY ASSETS, SERVICE
- CADENT GAS, LOW PRESSURE
- CADENT GAS, MEDIUM PRESSURE
- CADENT GAS, LOCAL-HIGH PRESSURE
- HIGHWAYS ENGLAND - NORTH WEST (FORMER 10 & 13), NOT SPECIFIED
- NETWORK RAIL, DC ASSET LINE
- NETWORK RAIL, DB ASSET LINE
- UNITED UTILITIES, GULLY, SURFACE WATER SEWER
- UNITED UTILITIES, GULLY, FOUL SEWER
- UNITED UTILITIES, GULLY, COMBINED SEWER
- UNITED UTILITIES, SURFACE WATER
- UNITED UTILITIES, SURFACE WATER PRIVATE
- UNITED UTILITIES, OVERFLOW
- UNITED UTILITIES, ABANDONED
- UNITED UTILITIES, ABANDONED (S)
- UNITED UTILITIES, FOUL SEWER
- UNITED UTILITIES, COMBINED SEWER
- UNITED UTILITIES, COMBINED SEWER PRIVATE
- YORKSHIRE WATER, SURFACE WATER SEWER
- YORKSHIRE WATER, FOUL SEWER
- YORKSHIRE WATER, COMBINED SEWER
- ZAYO GROUP UK LTD CO JSM GROUP LTD, NOT SPECIFIED
- VODAFONE, OWNED
- VIRGIN MEDIA, NOT SPECIFIED
- OPENREACH - [BRITISH TELECOMMUNICATIONS], PROPOSED
- OPENREACH - [BRITISH TELECOMMUNICATIONS], PROPOSED, OVERHEAD
- OPENREACH - [BRITISH TELECOMMUNICATIONS], NOT SPECIFIED
- OPENREACH - [BRITISH TELECOMMUNICATIONS], OVERHEAD
- OPENREACH - [BRITISH TELECOMMUNICATIONS], DUCT
- NEOS NETWORK, NOT SPECIFIED
- UNITED UTILITIES, TRUNK MAIN, PROPOSED
- UNITED UTILITIES, TRUNK MAIN
- UNITED UTILITIES, RAW WATER
- UNITED UTILITIES, PRIVATE PIPE, PROPOSED
- UNITED UTILITIES, PRIVATE PIPE
- UNITED UTILITIES, ABANDONED (W)
- UNITED UTILITIES, DISTRIBUTION MAIN, PROPOSED
- UNITED UTILITIES, DISTRIBUTION MAIN
- UNITED UTILITIES, DISTRIBUTION MAIN, ABANDONED
- UNITED UTILITIES, COMMS PIPE, PROPOSED
- UNITED UTILITIES, COMMS PIPE
- UNITED UTILITIES, COMMS PIPE, ABANDONED
- YORKSHIRE WATER, WATER MAIN
- YORKSHIRE WATER, WATER MAIN, ABANDONED
- YORKSHIRE WATER, WATER MAIN PRIVATE

Description

Status	Rev	Drawn	Chk'd	Rev'd	Auth	Issue Date
--------	-----	-------	-------	-------	------	------------

Description

Status	Rev	Drawn	Chk'd	Rev'd	Auth	Issue Date
--------	-----	-------	-------	-------	------	------------

Description

Status	Rev	Drawn	Chk'd	Rev'd	Auth	Issue Date
--------	-----	-------	-------	-------	------	------------

Description
FIRST ISSUE

Status	Rev	Drawn	Chk'd	Rev'd	Auth	Issue Date	
A1		C01	KW	HK	JK	JK	14/02/24

Status	Drawing Suitability
A1	APPROVED - PUBLISHED



Chadwick House
Birchwood Park
Warrington
WA3 6AE

Tel: +44 (0)1925 238000
Fax: +44 (0)1925 238500

Copyright © AtkinsRéalis (2023) www.AtkinsRealis.com

Client



Project Title
EAST LANCASHIRE LUF BUS STOP
ACCESSIBILITY IMPROVEMENTS

Drawing Title
UTILITIES KEY

Drawing Number	Project	Originator	Functional Breakdown
	LCCBSA	- ATK	- HGN -
		ZZ	- DR - CH - 000045
Spatial Breakdown	Form	Discipline	Number

Original Size:	A3	Scale:	1:125	Project Ref. No:	5226062	Sheet:	1 of 1	Rev:	C01
----------------	----	--------	-------	------------------	---------	--------	--------	------	-----

This map is based on Ordnance Survey material with the permission of Ordnance Survey on behalf of the Controller of Her Majesty's Stationery Office. © Crown copyright. Unauthorised reproduction infringes Crown copyright and may lead to prosecution or civil proceedings. All rights reserved. Lancashire County Council Licence AC0000850590, 2023.

Scale 1:125

